



REPUBLIKA E SHQIPERISE
MINISTRIA E FINANCIVE

STATISTIKAT FISKALE TE QEVERISE



FISCAL STATISTICS OF GOVERNMENT

3 MUJORE - QUATERLY

TIRANE, 2004

NR 3.

SQARIME PER PERDORUESIT

Buletini ka per qellim dhenien e informacioneve periodike per statistikat fiskale te qeverise. Meqenese botimi eshte periodik, ai pasqyron treguesit e ndryshem sipas vlerave te tyre çdo muaj, ne menyre progresive dhe metodologjia e perdorur eshte Cash Base.

Per ta bere sa me te kuptueshem per perdoruesit, po japim disa sqarime per terminologjine kryesore.

BUXHETI I KONSOLIDUAR.

Pasqyron te ardhurat, shpenzimet dhe defiçitin nga aktiviteti i institucioneve publike dhe rajonale pa transferimet reciproke midis tyre.

TE ARDHURAT TOTALE.

Perfshijne te gjitha te ardhurat nga burimet e ndryshme tatimore, jotatimore dhe ndihmat pervec te ardhurave nga privatizimi, te cilat jane konsideruar si financim per deficitin.

NDIHMAT

Te ardhurat qe merren nga ndihmat qe jepen nga qeverite e shteteve te tjera dhe donatore te tjere.

TE ARDHURA TATIMORE.

Te ardhura qe merren nga vjelja e te gjitha llojeve te taksave dhe tatimeve qe zbatohen dhe kontributet nga Sigurimet Shoqerore dhe Shendetesore.

ANNEX

The main object of this bulletin is to give periodic information about fiscal statistics of government. Because of this, the bulletin is published periodically and methodology used is Cash Base.

In order to help the reader understand the material, a list of term explanations follows:

CONSOLIDATED BUDGET.

Is the presentation of the revenues, expenditures, and deficits from the activities of public and municipal institutions, without reciprocal transfers among them.

TOTAL REVENUES

Include all revenues from different sources, such as tax, non-tax revenues and grants except privatization receipts that are considered as a way of financing the deficit.

GRANTS

Are the revenues created by grants received from foreign governments and other donors.

TAX REVENUES.

Are all kinds of revenues received from taxation and all contributions from social and medical insurance.

TE ARDHURA JOTATIMORE.

Te ardhura te tjera qe merren nga burime te ndryshme si aktiviteti ekonomik i sektorit buxhetor, transferim fitimi nga Banka e Shqiperise, etj.

NON-TAX REVENUES.

Are all the other revenues received from such sources as economical activities of the budget sector, transfer payments from the Central Bank of Albania.

SHPENZIMET TOTALE.

Pagesat e pakthyeshme te qeverise per blerjen e mallrave, sherbimeve, per transfertat dhe pagesat e interesave, per realizimin e funksioneve te shtetit.

TOTAL EXPENDITURES.

Are all non-refundable governmental expenditures for the purchase of different products and services, for transfer and interest payments, and for performing of the governmental functions.

SHPENZIMET KORRENTE.

Perfshijne shpenzimet per sherbimet dhe sendet e konsumueshme (te konsumueshme ne me pak se nje vit) qe jane te domosdoshme per kryerjen e operacioneve te qeverise. Subvencionet, pagesat e interesit, etj perfshihen ne kete kategori.

CURRENT EXPENDITURES.

Include all expenditures for services and products of consume (to be consumed within one year) which are necessary for the governmental operations. Subventions, interest payments, etc., are included into this category.

SHPENZIMET KAPITALE.

Perfshijne vetem shpenzimet per sendet dhe sherbimet me afat perdorimi mbi nje vit. Ketu futen pagesat per perfitimin e sendeve me afat te gjate perdorimi, mjetet e kapitalit fiks si dhe pagesat per zevendesimin e mjeteve themelore te shkaterruara.

CAPITAL EXPENDITURES.

Include only expenditures for services and products of consume which are to be consumed for more than one year. Expenditures for acquisition of long life products, fixed assets, as well as substitution of smashed basic assets.

DEFICITI BUXHETOR.

Tejkalimi i shpenzimeve mbi te ardhurat e buxhetit te shtetit.

BUDGET DEFICIT.

Is the amount of money by which the governmental expenditures overweight the tax revenues.

FINANCIMI I DEFICITIT (CASH).

Perdorimi i fondeve hua per te mbuluar

FINANCING OF DEFICIT (CASH).

Is the use of loans in order to cover the

shpenzimet qeveritare qe nuk financohen nga te ardhurat.

governmental expenditures, which can not be financed by the tax revenues.

FINANCIMI I JASHEM I DEFICITIT.

Perdorimi i burimeve ne formen e detyrimeve neto, te krijuara gjate nje viti fiskal te qeverise ndaj personave jorezidente, institucioneve, qeverive te huaja, etj.

EXTERNAL FINANCING OF DEFICIT.

Is the use of such sources as the net obligations of the government towards foreign individuals, institutions, and governments, created within a fiscal year.

FINANCIMI I BRENDSEHEM I DEFICITIT.

Perdorimi i burimeve ne formen e detyrimeve neto, te krijuara gjate nje viti fiskal, te qeverise ndaj personave rezidente, institucioneve brenda vendit, etj.

INTERNAL FINANCING OF DEFICIT.

Is the use of such sources as the net obligations of the government towards inside individuals, institutions, created within a fiscal year.

Borxhi Publik.

Perfaqeson detyrime te krijuara deri ne vitin fiskal aktual nga operacionet qeveritare dhe i parashikuar per t'u shlyer bashke me interesat ne te ardhmen po nga operacionet qeveritare.

Public Debt.

Represents obligations created up until the present fiscal year by various governmental operations. It is supposed to be paid off along with the interests in the future, by some governmental operations, too.

PAGESAT E INTERESIT.

Pagesat e interesit gjate nje viti per te gjithë borxhin publik.

INTEREST PAYMENTS.

Are the annual payments against all the government debt.

NDRYSHIMI.

Eshte konceptuar si rritje ose zvogelim ne % i treguesve gjate nje periudhe kohe krahasuar me periudhen perkatese te vitit paraardhes. Ky ndryshim eshte trajtuar duke i krahasuar treguesit e dy viteve *ne vlera nominale* ose *reale* (te deflatuara me Indeksine e Çmimeve te Konsumit me baze dhjetor 2001 per te ardhurat e realizuara ne Tatime dhe te deflatura me kursin e kembimit per te ardhurat e realizuara

THE CHANGE.

Is the percentage (%) increase/decrease of the indicators of a specific time period, compared to the corresponding one of the previous year. This change is calculated by comparing the indicators of the above mentioned two years in nominal or real values (deflated by the Consume Price Index of December 2001 for the tax revenues and by the exchange rate for the custom revenues.)

ne dogana).

Klasifikimi funksional nderkombetar *The Classification of the Functions of Government (COFOG)* (Classification of the Functions of **Government (COFOG)**).

Government), I cili eshte paraqitur ne buletin, i Divides the expenditures in 14 big groups, as
ndan shpenzimet ne 14 grupe te medha sipas presented in the bulletin.
funksioneve.

TREGUESIT FISKALE SIPAS BUXHETIT TE KONSOLIDUAR 2004

(Fiscal indicators regarding consolidated budget of 2004)

ne milion leke (in million of leks)

Mujore (monthly)

Tab. 1.2b

Nr.	E M E R T I M I	Jan Jan	Shkurt Feb	Mars Mar	Prill April	Maj May	Qersh June	Korrik July	Gusht Aug	Shta Sep	
	TOTALI TE ARDHURAVE	12118	13370	15868	14864	14729	14967	14826	15335	16387	TOTAL REVENUE
I.	Ndihma	6	189	31	12	160	168	193	74	361	Grants
II.	Te ardhura tatimore	10960	12145	14605	12895	13662	13694	13583	14013	14755	Tax Revenue
II.1	Nga Tatimet dhe Doganat	8166	8659	9801	9433	10462	10425	10241	10910	10787	From tax offices and customs
1	Tatimi mbi Vleren e Shtuar	3853	4145	4469	4113	4999	4841	4623	5202	5248	V. A. T
2	Tatimi mbi Fitimin	1024	964	1616	1174	1297	1507	1559	1384	1225	Profit Tax
3	Akcozat	973	966	913	1360	1254	1400	1413	1640	1643	Excise Tax
4	Tatimi mbi te Ardhurat Personale	545	493	560	545	492	478	529	470	591	Personal Income Tax
5	Taksa Nacionale dhe te tjera	916	1131	1098	1240	1275	1020	978	1003	903	National Taxes and others
6	Taksa Doganore	856	961	1145	1001	1144	1178	1140	1211	1178	Custom Duties
II.2	Te ardhura nga Pushteti Lokal	567	940	1954	962	695	566	380	584	1159	Revenues from Local Gov.
1	Taksa Lokale	430	536	860	560	540	449	235	324	382	Local Taxes
2	Tatimi mbi Biznesin e vogel	138	403	1094	403	154	117	145	261	777	Small Business Tax
II.3	Te ardh Buxh. Pavarur (kontribute)	2227	2546	2850	2500	2506	2704	2962	2520	2809	Social ins. contributions
1	Sigurimi Shoqeror	2037	2298	2637	2259	2307	2450	2731	2298	2555	Social Insurance
2	Sigurimi Shendetesor	190	248	213	241	199	253	231	221	255	Health insurance
III.	Te ardhura Jotatimore	1151	1037	1232	1957	907	1105	1050	1247	1271	Nontax Revenue
1	Tran.Fitimi nga Banka e Shqiperise	0	473	572	571	441	404	360	235	433	Profit transfer from BOA
2	Te ardhura nga Inst.Buxhetore	985	492	569	724	375	612	607	669	742	Income of budgetary institutions
3	Te tjera	166	71	92	662	92	89	83	343	96	Other/not allocated
	TOTALI I SHPENZIMEVE	12479	14383	16513	17389	16134	17469	20103	16911	19947	TOTAL EXPENDITURE
I.	Shpenzime Korrente	11315	12790	14762	15391	14128	15237	17037	13652	16014	Current Expenditures
1	Personeli	3390	3573	3814	3782	3731	3943	4771	3315	4089	Personnel expenditures
	Paga	2761	2772	3004	2992	2913	3017	3958	2568	3159	Wages
	Kontributi per Sigurime Shoqerore	628	801	811	790	818	926	813	747	930	Social insurance contributions
2	Interesat	2973	1996	2592	3269	2199	2323	2939	1995	2783	Interest
	Te Brendshme	2751	1950	2558	3067	2037	2114	2776	1904	2748	Domestic
	Te Huaja	222	46	34	202	163	209	164	91	36	Foreign
3	Shpenzime Operative Mirembajtje	562	1826	1685	1899	2143	2101	2387	1527	2148	Operational & Maintenance
4	Subvencionet	73	114	931	279	230	460	529	170	438	Subsidies
5	Shpenzime per Sig.Sociale dhe te tjera	4188	4360	4943	5285	5039	5591	5710	5809	5840	Social insurance outlays
	Sigurime Shoqerore	3228	3232	3485	3514	3442	3754	3753	4035	3900	Social insurance
	Sigurime Shendetesore	445	438	466	517	404	491	546	428	537	Health insurance
	Buxheti lokal (Granti)	372	417	553	560	669	506	578	413	651	Local Budget (Grant)
	Buxheti lokal (Te ardhurat e veta)	143	272	439	694	524	840	833	932	752	Local Budget (Proper revenues)
6	Shpenzime te tjera	128	920	796	878	785	820	700	836	715	Other expenditures
	Pagesa e Papunesise	59	84	98	88	80	93	78	86	54	Unemployment insurance benefits
	Ndihma Ekonomike	70	836	698	790	705	727	621	751	661	Social assistance
II.	Shpenzime Kapitale	1164	1593	1751	1998	2007	2232	3066	3259	3933	Capital expenditures
	Financimi Brendshem	21	1056	1267	1391	729	2038	2037	2375	3013	Domestically financing
	Financimi Huaj	1143	537	483	607	1278	194	1029	884	920	Foreign financed
	DEFICITI	-362	-1012	-644	-2525	-1405	-2502	-5277	-1576	-3559	Overall Deficit
	FINANCIMI DEFICITIT	362	1012	644	2525	1405	2502	5277	1576	3559	Deficit Financing
	Brendshem	-519	771	298	1938	700	3055	4737	716	3113	Domestic
	Te ardhura nga privatizimi	14	13	75	131	3512	406	3479	209	439	Privatization receipts
	Hua-marje e brendeshme	3907	287	785	1929	-2791	1380	-327	290	2761	Domestic Borrowing
	Te tjera	-4439	471	-562	-122	-21	1269	1585	218	-87	Other
I	Huaj	880	241	346	587	705	-553	540	860	446	Foreign
	Hua afatgjate(e marre)	560	458	697	429	1263	128	720	889	622	Long-term Loan(Drawings)
	Ndryshimi i gjendjes se arkës*	578	-120	-243	165	-172	-83	104	79	-73	Chang. of stat. Account*
	Ripagesat	-257	-98	-109	-7	-386	-599	-284	-107	-103	Repayments
	KAPITUJT KRYESORE										Main indicators
	Financimi i Brendshem i Deficitit	-519	771	298	1938	700	3055	4737	716	3113	Domestically financed deficit
	Deficiti Pergjithshem	-362	-1012	-644	-2525	-1405	-2502	-5277	-1576	-3559	Overall Balance
	Te ardh.-Shpen.nga Sig. Shoq.dhe Shend.	-1446	-1125	-1102	-1531	-1340	-1541	-1337	-1944	-1628	Soc.& health insur.contr.-outlays

* "Ndryshimi i gjendjes se arkës" perfaqeson ndryshimin ne Depozites se Financimeve te Huaja

"Chang. of stat. Account" stands for the change in Foreign Financing Deposit

NDRYSHIMI TREGUESVE FISKALE KRAHASUAR ME 2003 NE TERMA NOMINALE
The Change of Fiscal indicators compared with 2003 in nominal terms

Ne % (in percent)

Tab. 1.2c

Nr.	E M E R T I M I	Jan Jan	Shku Feb	Mars March	Prill April	Maj May	Qer June	Korr July	Gusht Aug	Shta Sept	
	TOTALI TE ARDHURAVE	12.59	14.80	16.87	9.83	8.53	7.52	8.13	9.13	9.82	TOTAL REVENUE
I.	Ndihma	-97.86	-40.13	-33.66	-35.74	3.24	43.97	100.57	-23.48	4.76	Grants
II.	Te ardhura tatimore	11.61	11.52	13.33	11.05	11.07	11.05	11.57	13.23	12.80	Tax Revenue
II.1	Nga Tatimet dhe Doganat	10.18	9.61	11.35	10.51	10.63	11.09	11.77	13.81	13.06	From tax offices and customs
1	Tatimi mbi Vleren e Shtuar	12.60	15.53	15.68	14.30	14.44	13.55	12.93	16.02	14.92	V. A. T
2	Tatimi mbi Fitimin	4.29	-5.46	11.38	8.77	8.35	15.34	19.38	20.22	20.59	Profit Tax
3	Akcizat	25.09	23.36	17.85	13.98	14.11	19.96	24.48	28.36	28.30	Excise Tax
4	Tatimi mbi te Ardhurat Personale	26.59	16.68	22.61	20.97	18.04	8.00	6.15	5.13	6.87	Personal Income Tax
5	Taksa Nacionale dhe te tjera	9.74	8.44	4.34	7.51	9.46	8.12	7.58	6.20	4.18	National Taxes and others
6	Taksa Doganore	-8.94	-5.36	-2.68	-1.88	-2.60	-2.83	-2.23	-0.22	-1.85	Custom Duties
II.2	Te ardhura nga Pushteti Lokal	70.30	60.66	41.80	19.48	18.26	17.99	11.76	11.06	12.90	Revenues from Local Gov.
1	Taksa Lokale	96.03	84.07	39.19	6.79	8.02	8.12	1.06	0.07	-0.49	Local Taxes
2	Tatimi mbi Biznesin e vogel	20.80	30.92	44.83	38.78	35.38	36.16	32.39	32.09	35.44	Small Business Tax
II.3	Te ardh Buxh. Pavarur (kontribute)	7.33	7.72	10.13	9.58	9.96	8.55	10.78	11.78	11.78	Social ins. contributions
1	Sigurimi Shoqeror	7.82	6.73	10.83	10.82	11.16	9.40	11.52	12.45	12.26	Social Insurance
2	Sigurimi Shendetesor	2.32	18.65	3.10	-1.82	-1.28	0.38	3.45	5.24	6.96	Health insurance
III.	Te ardhura Jotatimore	76.61	89.05	93.11	2.48	-11.77	-20.66	-21.43	-19.62	-14.50	Nontax Revenue
1	Tran.Fitimi nga Banka e Shqiperise				-43.28	-49.78	-51.57	-51.24	-51.69	-44.84	Profit transfer from BOA
2	Te ardhura nga Inst.Buxhetore	87.80	61.94	54.10	61.37	47.77	45.39	42.50	41.61	38.87	Income of budgetary institutions
3	Te tjera	30.56	-3.11	-25.78	45.68	20.53	-28.86	-33.72	-26.42	-27.33	Other/not allocated
	TOTALI I SHPENZIMEVE	15.40	10.07	9.19	12.15	6.61	6.36	7.74	7.19	8.14	TOTAL EXPENDITURE
I.	Shpenzime Korrente	10.30	5.98	7.77	10.53	7.66	7.69	8.23	8.18	8.80	Current Expenditures
1	Personeli	8.80	8.21	8.91	9.82	9.16	9.53	10.68	10.44	11.66	Personnel expenditures
	Paga	7.94	7.77	9.01	9.87	9.36	9.10	10.82	10.39	11.57	Wages
	Kontributi per Sigurime Shoqerore	12.76	9.92	8.55	9.63	8.40	11.11	10.15	10.62	11.99	Social insurance contributions
2	Interesat	8.46	0.25	4.81	13.39	3.24	1.56	1.33	-0.50	2.64	Interest
	Te Brendshme	7.64	0.47	5.32	13.78	3.09	1.48	0.80	-0.57	2.71	Domestic
	Te Huaja	19.68	-3.47	-6.19	5.91	6.04	2.86	11.03	0.73	1.46	Foreign
3	Shpenzime Operative Mirembajtje	-15.88	-3.83	-6.52	2.22	1.75	0.91	4.78	6.70	5.46	Operational & Maintenance
4	Subvencionet	-1.71	-51.73	-7.06	6.27	1.93	19.42	23.03	21.19	13.40	Subsidies
5	dhe te tjera	19.00	14.23	14.73	13.23	10.59	11.43	10.47	11.13	10.64	Social insurance outlays
	Sigurime Shoqerore	10.06	8.37	10.03	9.94	9.44	10.08	8.75	9.39	10.08	Social insurance
	Sigurime Shendetesore	76.10	45.90	41.32	43.66	35.25	41.21	44.66	41.22	41.40	Health insurance
	Buxheti lokal (Granti)	34.27	10.71	3.64	-6.75	-3.00	-3.30	-2.85	-1.98	-4.23	Local Budget (Grant)
	Buxheti lokal (Te ardhurat e veta)	152.53	104.15	81.64	54.84	17.63	17.10	13.70	16.14	10.02	Local Budget (Proper revenues)
6	Shpenzime te tjera	-8.00	5.06	12.86	7.20	15.56	8.96	9.05	7.31	10.54	Other expenditures
	Pagesa e Papunesise	-2.61	11.37	18.53	16.58	16.87	13.74	9.12	10.69	7.48	Unemployment insurance benefits
	Ndihma Ekonomike	-12.08	4.14	12.05	6.03	15.40	8.37	9.04	6.89	10.93	Social assistance
II.	Shpenzime Kapitale	109.77	66.17	23.19	27.74	-1.10	-3.01	4.29	1.03	4.23	Capital expenditures
	Financimi Brendshem	-62.91	68.83	28.49	23.94	-1.97	5.49	3.22	10.15	19.36	Domestically financing
	Financimi Huaj	129.74	64.51	17.92	33.23	-0.13	-13.66	6.13	-11.91	-16.59	Foreign financed
	DEFICITI	600.52	-37.59	-53.46	51.72	-11.96	-4.17	5.01	-5.55	-2.36	Overall Deficit
	FINANCIMI DEFICITIT	600.52	-37.59	-53.46	51.72	-11.96	-4.17	5.01	-5.55	-2.36	Deficit Financing
	Brendshem	1991.98	-85.06	-82.57	52.26	-10.61	14.62	12.20	-1.05	8.42	Domestic
	Te ardhura nga privatizimi	-81.85	-77.56	-54.90	-5.44	1205.04	1095.38	1697.22	1569.71	1630.92	Privatization receipts
	Hua-marrje e brendeshme	3.17	-19.92	-13.63	11.65	-47.84	-43.62	-59.25	-62.22	-49.12	Domestic Borrowing
	Te tjera	14.20	8.29	60.13	-3.06	1.28	-26.79	-45.31	-48.37	-43.25	Other
	I Huaj	1051.67	120.03	24.78	51.07	-13.48	-34.54	-16.40	-17.70	-28.39	Foreign
	Hua afatgjate(e marre)	-8.08	2.10	4.62	9.87	-3.29	-22.72	-13.30	-8.60	-15.26	Long-term Loan(Drawings)
	Ndryshimi i gjendjes se arkesh*	-243.80	-250.46	-245.86	-253.75	50.68	-305.68	-170.38	25.37	-49.63	Chang. of stat. Account*
	Ripagesat	96.58	93.80	46.68	36.55	81.14	27.24	34.17	23.78	20.80	Repayments
	KAPITUJT KRYESORE										Main indicators
	Financimi i Brendshem i Deficitit	1991.98	-85.06	-82.57	52.26	-10.61	14.62	12.20	-1.05	8.42	Domestically financed deficit
	Deficiti Pergjithshem	600.52	-37.59	-53.46	51.72	-11.96	-4.17	5.01	-5.55	-2.36	Overall Balance
	Te ardh.-Shpen.nga Sig. Shoq.dhe Shend.	30.19	20.36	19.53	20.88	16.05	22.58	14.65	13.34	15.29	Soc.& health insur.contr.-outlays

* "Ndryshimi i gjendjes se arkesh" perfaqeson ndryshimin ne Depozites se Financimeve te Huaja

"Chang. of stat. Account" stands for the change in Foreign Financing Deposit

NDRYSHIMI I TREGUESVE FISKALE KRAHASUAR ME 2003 NE TERMA REALE

The Change of fiscal indicators compared with 2003 in real terms

Ne % (in percent)

Tab. 1.2d

Nr.	E M E R T I M I	Jan Jan	Shku Feb	Mars Mar	Prill April	Maj May	Qersh June	Korrik July	Gusht Aug	Shta Sep
	TOTALI TE ARDHURAVE	10.32	13.74	16.37	10.05	7.34	3.04	1.47	2.65	4.15 TOTAL REVENUE
I.	Ndihma	-97.90	-40.68	-33.94	-35.62	2.10	37.97	88.21	-28.03	-0.65 Grants
II.	Te ardhura tatimore	9.36	10.49	12.85	11.27	9.85	6.42	4.70	6.51	6.97 Tax Revenue
II.1	Nga Tatimet dhe Doganat	7.95	8.60	10.88	10.73	9.41	6.46	4.88	7.05	7.22 From tax offices and customs
1	Tatimi mbi Vleren e Shtuar	10.33	14.47	15.19	14.52	13.18	8.82	5.97	9.13	8.98 V. A. T
2	Tatimi mbi Fitimin	2.18	-6.33	10.91	8.98	7.16	10.54	12.02	13.08	14.36 Profit Tax
3	Akcizat	22.57	22.22	17.34	14.20	12.86	14.96	16.81	20.74	21.67 Excise Tax
4	Tatimi mbi te Ardhurat Personale	24.04	15.61	22.09	21.20	16.74	3.50	-0.39	-1.12	1.35 Personal Income Tax
5	Taksa Nacionale dhe te tjera	7.53	7.45	3.89	7.72	8.26	3.62	0.95	-0.11	-1.20 National Taxes and others
6	Taksa Doganore	-10.77	-6.23	-3.10	-1.69	-3.67	-6.88	-8.25	-6.15	-6.92 Custom Duties
II.2	Te ardhura nga Pushteti Lokal	66.87	59.18	41.19	19.71	16.95	13.07	4.88	4.46	7.07 Revenues from Local Gov.
1	Taksa Lokale	92.07	82.37	38.60	7.00	6.84	3.62	-5.17	-5.88	-5.64 Local Taxes
2	Tatimi mbi Biznesin e vogel	18.36	29.72	44.21	39.05	33.89	30.49	24.24	24.25	28.44 Small Business Tax
II.3	Te ardh Buxh. Pavarur (kontribute)	5.16	6.73	9.66	9.79	8.75	4.03	3.96	5.15	6.00 Social ins. contributions
1	Sigurimi Shoqeror	5.64	5.74	10.36	11.04	9.93	4.85	4.65	5.77	6.46 Social Insurance
2	Sigurimi Shendetesor	0.25	17.56	2.66	-1.63	-2.36	-3.80	-2.92	-1.01	1.43 Health insurance

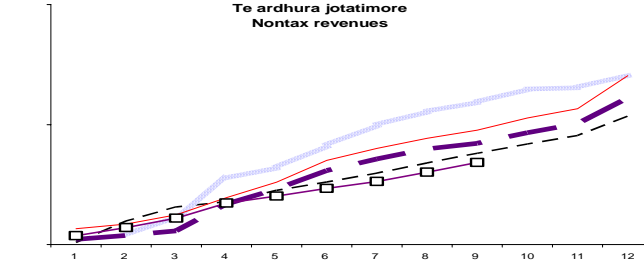
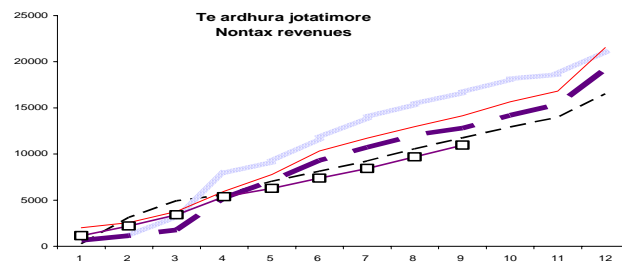
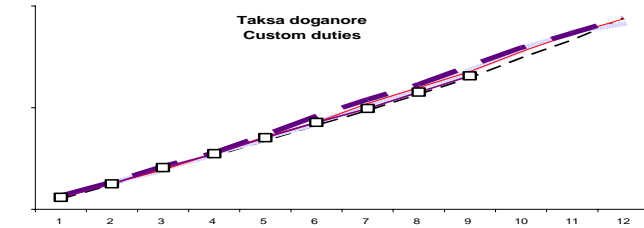
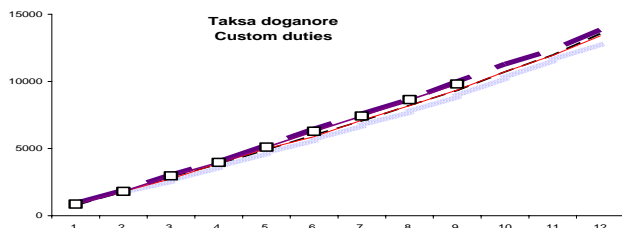
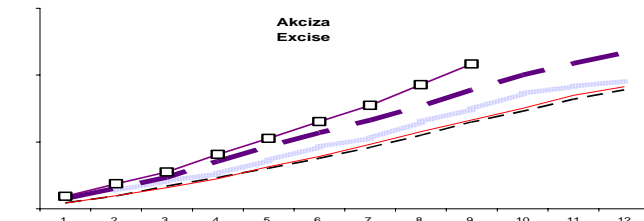
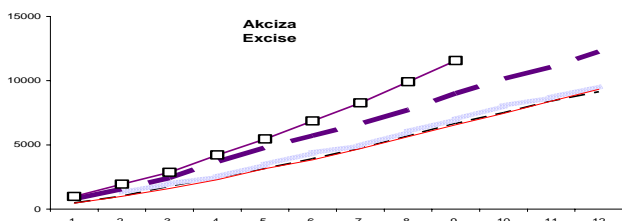
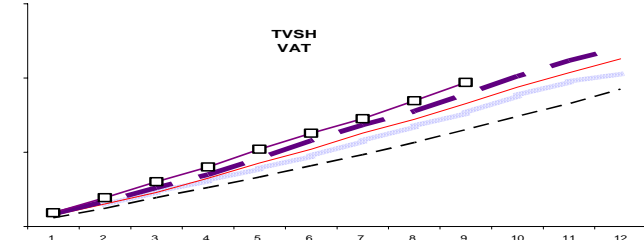
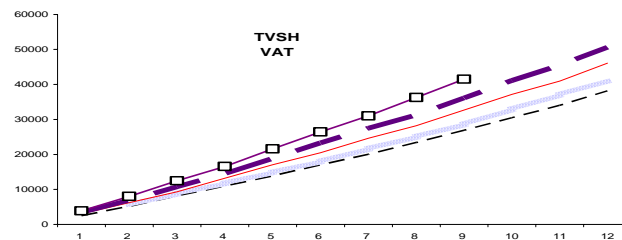
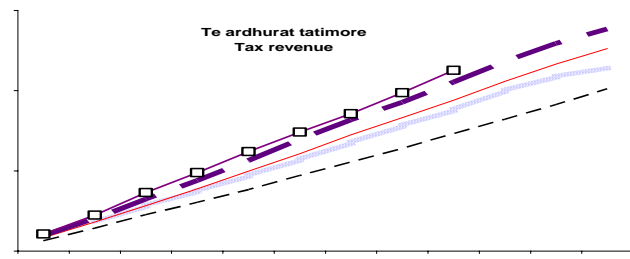
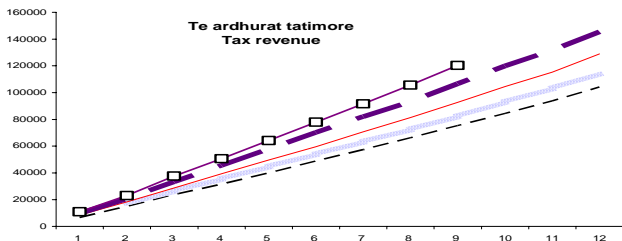
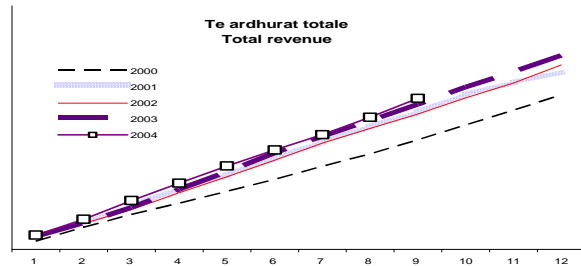
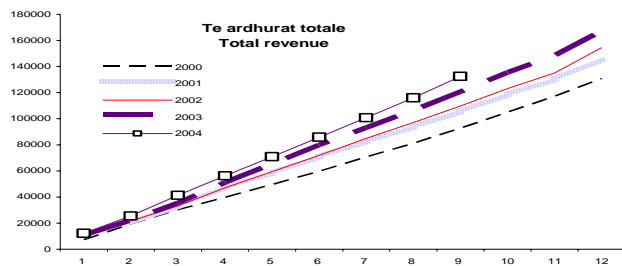
Paraqitja grafike per disa zera kryesore te te ardhurave (The graphs for some main indicators of Revenues)

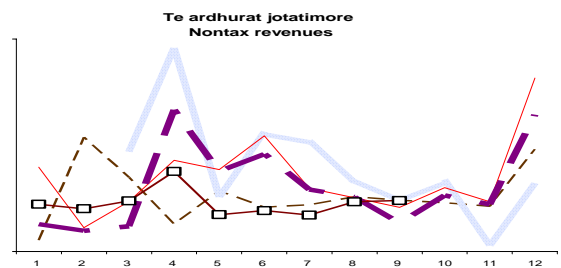
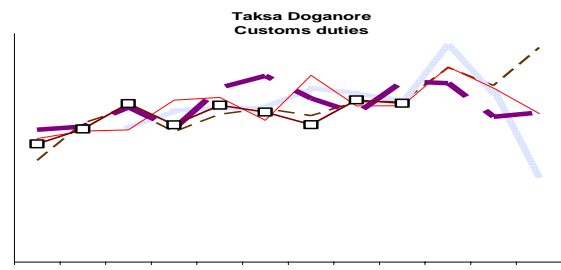
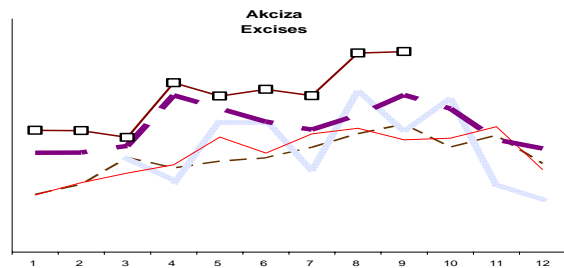
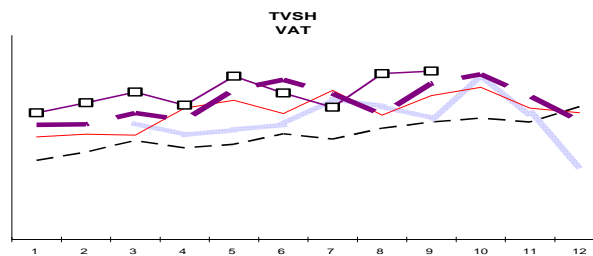
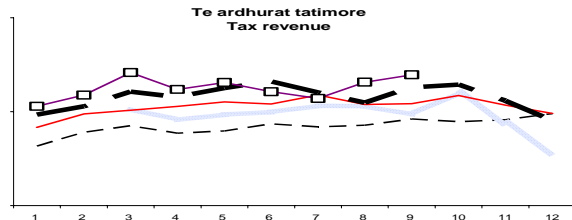
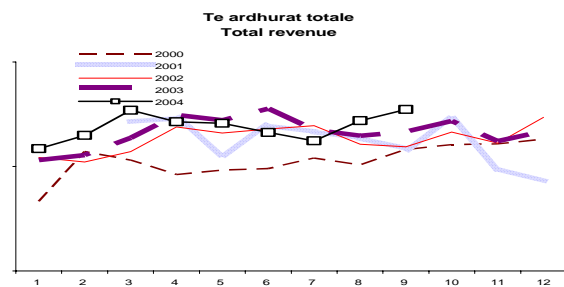
NOMINALE

Te dhena progresive

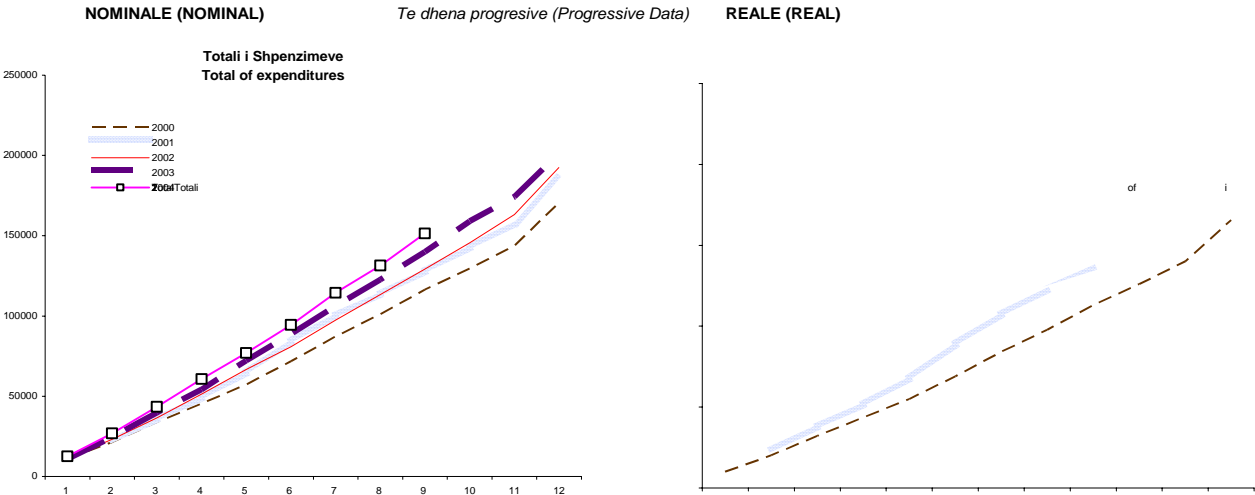
(Progressive Data)

REALE



REALE

Paraqitja grafike per disa zera kryesore te shpenzimeve (The graphs for some main indicators of Expenditures)

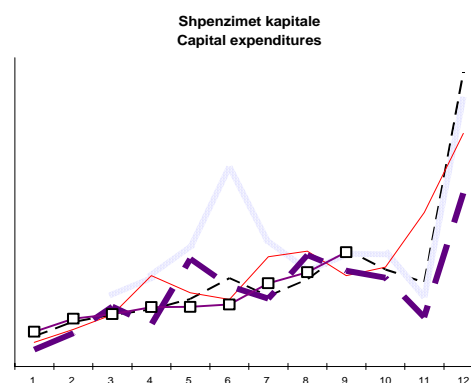
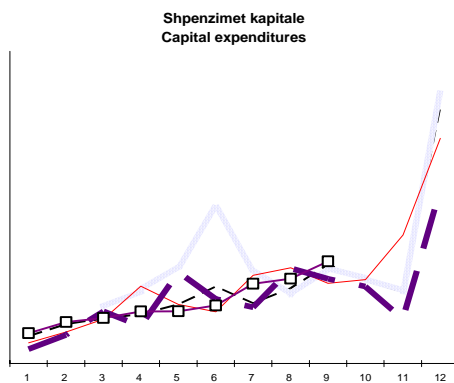
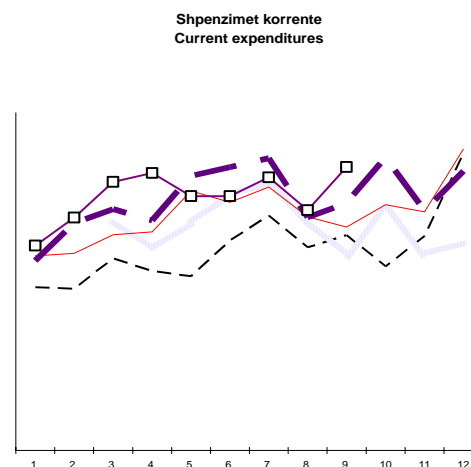
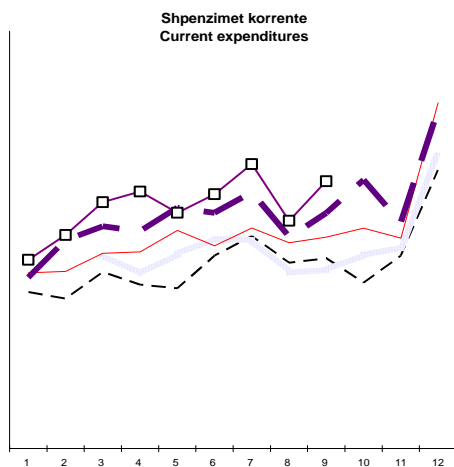
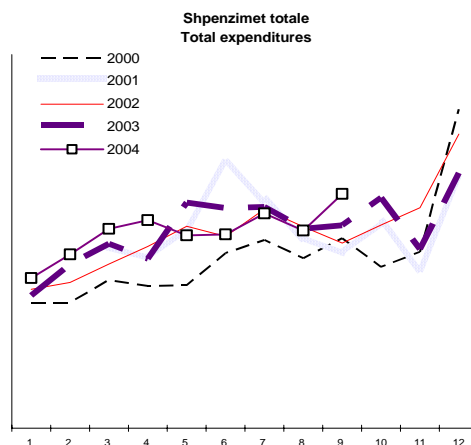
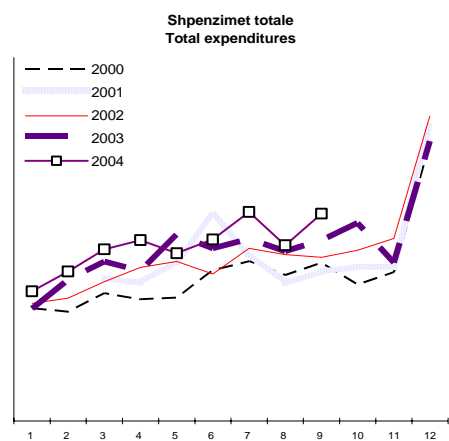


Paraqitja grafike per disa zera kryesore te shpenzimeve (The graphs for some main indicators of Expenditures)

NOMINALE

Te dhena mujore (Monthly data)

REALE



SHPENZIMET SIPAS KLASIFIKIMIT FUNKSIONAL (EXPENDITURES BY FUNCTIONS)
VITI (YEAR) 2004

Te dhena progresive (Progressive Data)

ne milion leke (in million of leks)

Tab. 2.2a

Funksionet	Janar Jan	Shkurt Feb	Mars Mar	Prill April	Maj May	Qershor June	Korrik July	Gusht Aug	Shta Sep	Functions
TOTAL	12,479	26,862	43,375	60,764	76,899	94,368	114,471	131,382	151,329	TOTAL
1. Sherbime te pergjithshme publike	1,470	3,533	5,010	7,060	9,061	11,500	14,221	15,799	17,886	General Public Services
2. Mbrojtja	281	761	1,283	1,865	2,754	3,571	4,374	5,370	6,156	Defense
3. Rendi publik dhe ceshtje sigurie	657	1,291	2,649	3,620	4,573	5,566	6,750	7,812	8,990	Public Order and Safety
4. Arsimi	1,354	2,745	4,445	6,086	7,814	9,518	11,949	13,426	15,680	Education
5. Shendetsia	850	2,398	3,797	5,235	6,616	8,067	9,929	11,296	13,033	Health
6. Sig. Shoq. dhe ndihma ekonomike	3,384	7,586	11,933	16,441	20,756	25,423	29,992	34,923	39,681	Social Security and Welfare
7. Banesat dhe sherbimi komunal	326	656	1,844	2,530	3,378	4,496	5,586	6,311	7,421	Housing and Commun. Amenities
8. Krijimi, Kultura, Feja	116	274	484	689	897	1,116	1,465	1,681	1,985	Recr. Cultr. Relig. Affairs
9. Energjia dhe lendet djegese	17	41	340	440	560	602	775	871	1,048	Fuel and Energy
10. Bujq., pyjet, peshkimi, gjuetia	128	366	806	1,281	1,608	1,964	2,442	2,810	3,253	Agric. Forestry. Fishing. Hunt
11. Burimet minerale	3	44	118	151	193	255	194	243	457	Mineral Resource
12. Transporti dhe komunikimi	793	2,052	2,746	3,994	4,818	6,030	7,399	9,365	11,325	Transportation & Communication
13. Sherbime ekonomike te tjera	7	17	21	73	149	223	252	289	322	Other Economic Affairs & Services
14. Shpenzime te tjera	3,094	5,097	7,899	11,299	13,722	16,036	19,143	21,186	24,093	Other Expenditures

Te dhena mujore (monthly data)

ne milion leke (in million of leks)

Tab. 2.2b

Funksionet	Janar Jan	Shkurt Feb	Mars Mar	Prill April	Maj May	Qershor June	Korrik July	Gusht Aug	Shta Sep	Functions
TOTAL	12,479	14,383	16,513	17,389	16,134	17,469	20,103	16,911	19,947	TOTAL
1. Sherbime te pergjithshme publike	1,470	2,063	1,477	2,050	2,001	2,439	2,720	1,578	2,087	General Public Services
2. Mbrojtja	281	480	522	582	889	817	803	996	786	Defense
3. Rendi publik dhe ceshtje sigurie	657	634	1,358	971	953	993	1,183	1,063	1,178	Public Order and Safety
4. Arsimi	1,354	1,391	1,700	1,641	1,728	1,704	2,431	1,477	2,254	Education
5. Shendetsia	850	1,548	1,399	1,438	1,381	1,451	1,861	1,367	1,737	Health
6. Sig. Shoq. dhe ndihma ekonomike	3,384	4,203	4,347	4,508	4,315	4,668	4,569	4,931	4,758	Social Security and Welfare
7. Banesat dhe sherbimi komunal	326	330	1,188	686	848	1,118	1,091	725	1,110	Housing and Commun. Amenities
8. Krijimi, Kultura, Feja	116	158	210	205	208	219	349	215	304	Recr. Cultr. Relig. Affairs
9. Energjia dhe lendet djegese	17	24	299	100	120	42	173	96	177	Fuel and Energy
10. Bujq., pyjet, peshkimi, gjuetia	128	238	440	475	327	356	478	369	442	Agric. Forestry. Fishing. Hunt
11. Burimet minerale	3	41	74	33	42	62	-62	49	214	Mineral Resource
12. Transporti dhe komunikimi	793	1,259	694	1,248	824	1,212	1,369	1,966	1,960	Transportation & Communication
13. Sherbime ekonomike te tjera	7	10	4	52	76	74	29	37	33	Other Economic Affairs & Services
14. Shpenzime te tjera	3,094	2,004	2,801	3,401	2,422	2,315	3,107	2,042	2,907	Other Expenditures

Shpenzimet qe ndodhen jashte strukture jane perfshire tek zeri "Shpenzime te tjera"

Expenditures that are out of structure are included in the item "Other Expenditures"

NDRYSHIMI I SHPENZIMEVE KRAHASUAR ME VITIN 2003 NE % (NOMINALE)

THE CHANGE OF EXPENDITURES COMPARED WITH 2003 IN % (NOMINAL)

Tab. 2.2c

Funksionet	Janar Jan	Shkurt Feb	Mars Mar	Prill April	Maj May	Qersh June	Korr July	Gusht Aug	Shta Sep	Functions
TOTAL	10.2	16.0	18.6	18.4	15.3	6.4	17.5	15.8	17.1	Total
1. Sherbime te pergjithshme publike	44.4	76.4	25.9	21.2	11.6	(4.4)	15.4	10.3	8.6	General Public Services
2. Mbrojtja	35.9	31.4	28.4	6.0	17.0	23.0	24.2	31.7	29.6	Defense
3. Rendi publik dhe ceshtje sigurie	64.0	18.1	35.4	28.4	24.2	11.9	15.9	17.3	13.8	Public Order and Safety
4. Arsimi	40.5	16.4	16.6	14.9	11.4	2.9	15.9	15.8	19.7	Education
5. Shendetsia	35.3	43.8	42.7	40.4	36.8	14.8	40.8	39.4	40.7	Health
6. Sig. Shoq. dhe ndihma ekonomike	14.2	15.1	16.3	17.0	19.6	10.0	18.9	18.6	19.4	Social Security and Welfare
7. Banesat dhe sherbimi komunal	6.8	1.4	37.1	6.2	8.5	(1.1)	28.2	17.5	21.2	Housing and Commun. Amenities
8. Krijimi, Kultura, Feja	116.0	35.3	27.9	26.4	16.0	2.4	18.8	16.4	18.8	Recr. Cultr. Relig. Affairs
9. Energjia dhe lendet djegese	(99.1)	(98.2)	(86.9)	(87.3)	(84.0)	19.3	(79.8)	(82.5)	(80.2)	Fuel and Energy
10. Bujq., pyjet, peshkimi, gjuetia	83.3	(46.4)	(31.8)	(24.6)	(26.6)	(2.8)	(30.4)	(28.7)	(25.8)	Agric. Forestry. Fishing. Hunt
11. Burimet minerale	220.2	9.0	22.0	9.8	5.0	(65.5)	(33.4)	(26.2)	16.9	Mineral Resource
12. Transporti dhe komunikimi	999.8	134.9	74.7	74.7	55.2	28.3	46.1	47.7	39.9	Transportation & Communication
13. Sherbime ekonomike te tjera	(32.7)	(30.8)	(70.5)	(37.9)	(6.6)	68.3	1.8	(1.3)	(5.5)	Other Economic Affairs & Services
14. Shpenzime te tjera	12.1	24.2	39.3	56.5	33.2	2.2	30.9	28.2	32.7	Other Expenditures

NDRYSHIMI I SHPENZIMEVE KRAHASUAR ME VITIN 2003 NE % (REALE)

THE CHANGE OF EXPENDITURES COMPARED WITH 2003 IN % (REAL)

Tab. 2.2d

Funksionet	Janar Jan	Shkurt Feb	Mars Mar	Prill April	Maj May	Qersh June	Korr July	Gusht Aug	Shta Sep	Functions
TOTAL	8.0	14.9	18.1	18.6	14.0	1.9	10.3	8.9	11.1	Total
1. Sherbime te pergjithshme publike	41.5	74.8	25.4	21.5	10.3	(8.4)	8.3	3.8	2.9	General Public Services
2. Mbrojtja	33.2	30.2	27.8	6.2	15.7	17.9	16.6	23.9	22.9	Defense
3. Rendi publik dhe ceshtje sigurie	60.6	17.0	34.8	28.6	22.8	7.2	8.8	10.4	8.0	Public Order and Safety
4. Arsimi	37.6	15.3	16.1	15.1	10.2	(1.4)	8.8	8.9	13.5	Education
5. Shendetsia	32.6	42.5	42.1	40.7	35.3	10.0	32.1	31.2	33.5	Health
6. Sig. Shoq. dhe ndihma ekonomike	11.9	14.1	15.8	17.2	18.3	5.4	11.6	11.5	13.2	Social Security and Welfare
7. Banesat dhe sherbimi komunal	4.7	0.5	36.5	6.4	7.3	(5.3)	20.3	10.5	14.9	Housing and Commun. Amenities
8. Krijimi, Kultura, Feja	111.6	34.0	27.3	26.7	14.7	(1.9)	11.5	9.5	12.6	Recr. Cultr. Relig. Affairs
9. Energjia dhe lendet djegese	(99.1)	(98.2)	(86.9)	(87.3)	(84.2)	14.4	(81.1)	(83.5)	(81.2)	Fuel and Energy
10. Bujq., pyjet, peshkimi, gjuetia	79.6	(46.9)	(32.0)	(24.5)	(27.4)	(6.9)	(34.7)	(33.0)	(29.6)	Agric. Forestry. Fishing. Hunt
11. Burimet minerale	213.8	8.0	21.5	10.0	3.8	(66.9)	(37.5)	(30.6)	10.8	Mineral Resource
12. Transporti dhe komunikimi	977.6	132.8	73.9	75.1	53.5	22.9	37.1	38.9	32.6	Transportation & Communication
13. Sherbime ekonomike te tjera	(34.1)	(31.4)	(70.6)	(37.8)	(7.7)	61.3	(4.5)	(7.1)	(10.4)	Other Economic Affairs & Services
14. Shpenzime te tjera	9.8	23.1	38.7	56.8	31.7	(2.1)	22.9	20.6	25.8	Other Expenditures

SHPENZIMET SIPAS KLASIFIKIMIT INSTITUCIONAL PER VITIN 2004
Expenditures by central institutions during the year 2004
Te dhena progresive (Progresive Data)
ne milion leke(in million leks)
Tab. 2.4a

Ministria ose Institucioni	Jan Jan	Shku Feb	Mars Mar	Prill April	Maj May	Qersh June	Korrik July	Gusht Aug	Shtator Sept	Ministry or Institution
Totali	12479	26862	43375	60764	76899	94368	114471	131382	151329	Total
Presidenca	13	18	31	60	76	94	109	131	136	President
Kryesia e Kuvendit Popullor	88	139	208	269	332	399	514	518	592	Parliament
Keshilli i Ministrave	26	78	125	213	287	388	449	487	561	Council of Ministers
Ministria e Industrise dhe Energjitikes	137	172	717	960	1333	1439	1713	1803	2295	Ministry of Public Economy and Privatization
Ministria e Bujqesise dhe Ushqimit	144	395	851	1186	1492	1824	2261	2576	2999	Ministry of Agriculture and Food
Ministria e Rregullimit te Territorit dhe Turizmit	214	349	1424	1865	2446	3474	4239	4725	5541	Ministry of Public Works
Ministria e Ekonomise	58	98	149	266	349	449	709	726	576	Ministry of Economic Coordination & Trade
Ministria e Transportit	765	1941	2407	3505	4175	4994	5999	7498	9100	Ministry of Transportation
Sistemi i regjistrimit te pasurise se paluajtshme	6	16	31	50	66	84	101	117	132	The System of Registr of Immovable Property
Ministria e Financave	48	85	161	197	245	383	551	645	718	Ministry of Finance
Ministria e Arsimit dhe Shkences	1351	2728	4324	5858	7472	9067	11389	12837	15025	Ministry of Education
Ministria e Kultures, Rinise dhe Sporteve	35	98	189	265	355	445	615	693	847	Ministry of Culture, Youth and Sport
Ministria e Shendetesise	846	2379	3759	5161	6515	7946	9785	11168	12840	Ministry of Health
Ministria e Drejtesise	89	284	467	577	719	841	1062	1179	1363	Justice System
Ministria e Puneve te Jashtme	133	259	386	560	766	826	988	1079	1245	Ministry of Foreign Affairs
Ministria e Brendshme	559	1327	2092	2910	3661	4459	5330	6264	7147	Interior Ministry
Ministria e Mbrojtjes	347	896	1565	2298	3316	4325	5307	6404	7383	Ministry of Defense
Sherbimi Informativ	58	131	205	278	350	425	515	595	695	National Information Service
Drejtoria e Radio-Televizionit	42	89	128	156	189	251	306	354	412	Department of Radio and Television
Drejtoria e Arkivit te Shtetit	4	9	28	33	42	48	78	85	99	State Archives
Drejtoria e Rezerves se Shtetit	7	15	28	37	47	55	67	75	84	Department of State Reserves
Akademia e Shkencave	32	66	101	138	173	218	262	304	347	Science Academy
Sherbimi i Kontrollit te Shtetit	12	27	46	62	80	95	118	125	144	State Audit Commission
Ministria e Punes dhe Ceshtjeve Sociale	3415	7645	12022	16516	20832	25511	30104	35062	39881	Ministry of Labor and Social Support
Komiteti i Mbrojtjes se Mjedisit	5	20	51	68	78	117	140	165	178	Environmental Defense Committee
Agjensia Kombetare e Privatizimit	2	5	7	13	16	20	24	25	29	National Agency for Privatization
Prokuroria e Pergjithshme	53	113	179	247	313	434	542	587	692	State Prosecutor
Pushteti Gjyqesor	60	138	232	314	404	499	685	728	853	High Court
Gjykata Kushtetuese	5	9	14	22	26	39	48	49	54	Constitutional Court
Agjensia Telegrafike Shqiptare	7	11	18	23	33	36	46	54	68	Albanian Press Agency
Ministria e Pushtetit Vendor dhe Decentralizimit	91	211	316	438	551	693	865	1043	1275	Local Government Ministry
Drejtoria e Doganave	39	92	197	293	385	482	584	669	774	Customs Department
Drejtoria e Standarteve	0	4	5	6	11	13	14	16	18	Department of Standards
Drejtoria e Policise Pyjore	24	93	137	187	235	291	366	432	498	Dept. of Forest Police
Partite Politike dhe Shoqatat	40	50	52	59	128	128	132	133	188	Political Parties
Drejtoria e Tatimeve	66	147	272	359	468	656	761	872	986	Tax Department
Shpenzime per sherbimin e borxhit	2973	4969	7562	10831	13030	15353	18293	20288	23071	Interests
Drejtoria e mjeteve matese	0	3	6	9	10	10	20	22	25	Department of Metereology & Kalibration
Instituti i Statistikes	10	17	26	37	52	70	83	102	114	Statistics Institute
Komisioni i Letrave me Vlere	1	4	5	7	9	11	12	13	14	The Commission of Shares Observation
Enti Kombetar i Zonave te Lira	0	1	1	2	2	3	3	4	4	National Entity of Free Zones
Shkolla e Magjistratures	2	6	10	14	17	22	29	29	34	The School of the Magistrature
Fondi i Programit Zhvillimit Rural	26	121	201	253	396	400	553	619	721	Rural Development Program
Qendra Kombetare Kinematografike	4	5	8	11	28	31	33	35	48	National Movies Center
Instituti i rehabilitimit te perndjekurve	2	6	11	15	16	23	28	29	34	Institute of integration of the ex political prisoners
Inspektoriati i keshillit te larte te drejtesise	4	9	13	16	18	29	34	40	43	Inspection of the high Council of Justice
Keshilli Kombetar i RTV	3	6	9	13	17	19	22	24	26	RTV State Council
Avokati i popullit	6	14	23	30	38	46	56	57	66	Ombudsman
Komisioni i Sherbimit Civil	2	6	9	13	16	20	26	27	33	Commission of civil service
Komisioni Qendror i Zgjedhjeve	6	11	19	27	24	39	52	60	70	Central election commission
Entet Lokale "Granti"	515	1205	2196	3450	4643	5990	7401	8746	10149	Local Entities "Grant"
Avokatia e Shtetit	7	12	18	24	32	36	46	53	60	State advocate
Agjentet tatimor jo-buxhetore	97	328	332	563	568	789	961	968	982	Tax agents not-budgetary
Te tjera	1	1	1	1	16	27	40	44	61	Others

SHPENZIMET SIPAS KLASIFIKIMIT INSTITUCIONAL PER VITIN 2004
Expenditures by central institutions during the year 2004

Te dhena mujore (Monthly Data)

ne milion leke(in million leks)

Tab. 2.4b

Ministria ose Institucioni	Jan Jan	Shku Feb	Mars Mar	Prill April	Maj May	Qersh June	Korrik July	Gusht Aug	Shtator Sept	Ministry or Institution
Totali	12479	14383	16513	17389	16134	17469	20103	16911	19947	Total
Presidenca	13	5	13	29	16	18	15	23	4	President
Kryesia e Kuvendit Popullor	88	51	69	61	63	67	115	4	74	Parliament
Keshilli i Ministrave	26	52	47	88	74	101	61	38	74	Council of Ministers
Ministria e Ekonomise Publike dhe Privatizimit	137	35	545	243	373	106	273	90	492	Ministry of Public Economy and Privatization
Ministria e Bujqesise dhe Ushqimit	144	251	456	335	306	332	437	315	423	Ministry of Agriculture and Food
Ministria e Puneve Publike	214	135	1075	441	581	1028	765	486	815	Ministry of Public Works
Ministria e Ekonomise	58	40	51	117	83	100	260	17	-149	Ministry of Economic Coordination & Trade
Ministria e Transportit	765	1176	466	1098	670	819	1005	1500	1602	Ministry of Transportation
Sistemi i regjistrimit te pasurise se paluajtshme	6	10	15	19	16	18	17	15	16	The System of Registr of Immovable Property
Ministria e Financave	48	37	76	36	48	138	169	94	73	Ministry of Finance
Ministria e Arsimit dhe Shkences	1351	1377	1596	1534	1614	1595	2322	1448	2188	Ministry of Education
Ministria e Kultures, Rinise dhe Sporteve	35	63	91	76	90	90	170	78	154	Ministry of Culture, Youth and Sport
Ministria e Shendetesise	846	1533	1380	1402	1354	1431	1839	1383	1672	Ministry of Health
Ministria e Drejtesise	89	195	183	110	142	122	221	117	184	Justice System
Ministria e Puneve te Jashtme	133	126	127	174	206	60	162	91	166	Ministry of Foreign Affairs
Ministria e Brendshme	559	768	765	818	751	798	871	935	883	Interior Ministry
Ministria e Mbrojtjes	347	549	669	733	1018	1009	982	1097	979	Ministry of Defense
Sherbimi Informativ	58	73	74	73	72	75	90	81	100	National Information Service
Drejtoria e Radio-Televizionit	42	47	39	28	33	62	55	48	58	Department of Radio and Television
Drejtoria e Arkivit te Shtetit	4	5	19	5	9	6	30	8	13	State Archives
Drejtoria e Rezerves se Shtetit	7	8	13	9	10	8	12	8	10	Department of State Reserves
Akademia e Shkencave	32	34	35	37	35	45	44	42	43	Science Academy
Sherbimi i Kontrollit te Shtetit	12	15	19	16	18	15	22	7	19	State Audit Commission
Ministria e Punes dhe Ceshtjeve Sociale	3415	4231	4377	4494	4316	4679	4593	4957	4819	Ministry of Labor and Social Support
Komiteti i Mbrojtjes se Mjedisit	5	15	31	17	10	39	22	25	13	Environmental Defense Committee
Agjensia Kombetare e Privatizimit	2	3	2	6	3	4	4	1	3	National Agency for Privatization
Prokuroria e Pergjithshme	53	60	66	68	66	121	108	45	105	State Prosecutor
Pushteti Gjyqesor	60	78	94	82	90	95	186	43	125	High Court
Gjykata Kushtetuese	5	4	5	8	4	13	9	0	5	Constitutional Court
Agjensia Telegrafike Shqiptare	7	4	7	5	10	3	10	8	14	Albanian Press Agency
Pushteti Lokal	91	120	105	122	113	142	172	178	232	Local Government Ministry
Drejtoria e Doganave	39	53	105	96	92	97	102	85	105	Customs Department
Drejtoria e Standarteve	0	4	1	1	5	2	2	1	2	Department of Standards
Drejtoria e Policise Pyjore	24	69	44	50	48	56	75	66	65	Dept. of Forest Police
Partite Politike dhe Shoqatat	40	10	2	7	69	0	4	1	55	Political Parties
Drejtoria e Tatimeve	66	81	125	87	109	188	105	111	115	Tax Department
Shpenzime per sherbimin e borxhit	2973	1996	2592	3269	2199	2323	2939	1995	2783	Interests
Drejtoria e mjeteve matese	0	3	3	3	1	0	10	2	3	Department of Metereology & Kalibration
Instituti i Statistikes	10	7	9	11	15	18	13	19	12	Statistics Institute
Komisioni i Letrave me Vlere	1	3	1	2	2	2	1	1	1	The Commission of Shares Observation
Enti Kombetar i Zonave te Lira	0	1	0	1	0	1	0	0	0	National Entity of Free Zones
Shkolla e Magjistratures	2	4	4	4	3	5	7	0	5	The School of the Magistature
Fondi i Programit Zhvillimit Rural	26	95	80	52	143	4	153	66	102	Rural Development Program
Qendra Kombetare Kinematografike	4	1	3	3	17	3	2	2	13	National Movies Center
Instituti i rehabilitimit te perndjekurve	2	4	5	4	1	7	5	1	5	Institute of integration of the ex political prisoners
Inspektoriat i keshillit te larte te drejtesise	4	5	4	3	2	11	6	5	3	Inspection of the high Council of Justice
Keshilli Kombetar i RTV	3	3	3	4	4	2	3	2	2	RTV State Council
Avokati i popullit	6	8	9	7	8	8	10	1	9	Ombudsman
Komisioni i Sherbimit Civil	2	4	3	4	3	4	6	1	6	Commission of civil service
Komisioni Qendror i Zgjedhjeve	6	5	8	8	-3	15	14	7	10	Central election commission
Entet Lokale "Granti"	515	690	991	1254	1193	1347	1411	1345	1403	Local Entities "Grant"
Avokatia e Shtetit	7	5	6	6	8	4	10	6	7	State advocate
Agjentet tatimor jo-buxhetore	97	231	4	231	5	221	171	7	14	Tax agents not-budgetary
Te tjera	1	0	0	0	15	11	13	3	17	Others

Shpenzimet e kryera ne rrethe Districts Expenditures

Te dhena progresive(Progressive data)

Tab. 2.5

Rrethi (District)	3Muj1(Q1) 2004		3Muj2(Q2) 2004		3Muj3(Q3) 2004	
	Total ne milion lek (Total in milion of leks)	Per fryme ne lek (Per capita in leks)	Total ne milion lek (Total in milion of leks)	Per fryme ne lek (Per capita in leks)	Total ne milion lek (Total in milion of leks)	Per fryme ne lek (Per capita in leks)
Totali i Rretheve Total of Districts	26785	8676	59938	19415	97176	31477
Berat	508	3956	1322	10293	2082	16216
Bulqize	143	3327	357	8301	591	13748
Delvine	61	5617	147	13499	250	22979
Devoll	119	3425	274	7889	431	12410
Diber	377	4376	876	10174	1440	16719
Durres	827	4519	2071	11318	3575	19537
Elbasan	1048	4658	2223	9882	3619	16086
Fier	793	3962	1821	9097	2956	14767
Gramsh	169	4731	394	11037	730	20443
Gjirokaster	397	7090	940	16787	1556	27794
Has	92	4637	236	11900	393	19787
Kavaje	295	3762	685	8739	1197	15264
Kolonje	134	7800	277	16097	462	26908
Korce	739	5150	1544	10763	2503	17441
Kruje	257	3993	621	9656	994	15443
Kucove	123	3458	299	8414	485	13634
Kukes	392	6120	973	15194	1673	26121
Kurbini	232	4255	525	9622	829	15202
Lezhe	367	5380	876	12839	1378	20196
Librazhd	248	3420	537	7406	854	11775
Lushnje	413	2861	957	6630	1572	10894
Malesi e Madhe	135	3671	330	8973	547	14874
Mallakaster	118	2959	295	7393	476	11945
Mat	267	4313	673	10870	1114	17999
Mirdite	197	5316	462	12474	761	20544
Peqin	140	4253	307	9337	516	15671
Permet	128	4954	336	12987	534	20659
Pogradec	338	4767	761	10727	1246	17578
Puke	206	5979	531	15401	845	24539
Sarande	243	6897	570	16175	1001	28423
Skrapar	193	6460	438	14665	698	23369
Shkoder	986	5307	2408	12960	3821	20567
Tepelene	184	5668	430	13235	696	21435
Tirane	14739	28174	31923	61020	51289	98038
Tropoje	175	6216	410	14564	654	23235
Vlore	1002	6804	2110	14326	3407	23132

Shenim. Jane perjashtuar shpenzimet kapitale me financim te huaj.

Note. The capital expenditures by foreign financing are excluded.

Tabela e investimeve (Table of investments) 2004

Te dhena progresive(Progresive data)

ne milion leke (in million of leks)

Tab 2.6a

[illegible]

Te dhena mujore (Monthly data)

ne milion leke (in million of leks)

Tab 2.6b[illegible]

TE ARDHURAT SIPAS KLASIFIKIMIT EKONOMIK

Revenues by economic classification

Te dhena progresive (progressive data)

Viti (Year) 2004 ne milion lek (in million leks)

Tab.3.1a

Nr.		Janar Jan	Shkurt Feb	Mars Mar	Prill Apr	Maj May	Qershor June	Korrik Jul	Gusht Aug	Shtator Sep	
	Totali i te Ardhurave	12118	25488	41356	56220	70949	85916	100742	116076	132464	Total
A.	BUXHETI QENDROR	9891	20716	33734	46098	58321	70585	82449	95264	108842	Central budget
I.	Ndihma	6	195	226	239	398	566	759	833	1195	Grants
II.	Te ardhura tatimore	8723	18313	30050	40428	51566	62540	73148	84625	96557	Tax revenues
1.	Tatim fitimi, te ardhurash	1161	2528	5238	6815	8266	9890	11593	13238	15240	Profit, income tax
1.1	Tatim fitimi	1024	1987	3604	4777	6074	7581	9140	10523	11748	Profit Tax
1.2	Tatim mbi biznesin e vogel	138	541	1635	2037	2191	2309	2454	2714	3491	Small business tax
2.	Tatim mbi te ardhura personale	545	1038	1597	2143	2635	3113	3642	4112	4703	Personal income tax
3.	Tatim mbi mallrat dhe sherb. e brendsh	6028	12711	19663	26651	34371	41837	48844	56877	64971	Goods & services taxes
3.1	TVSH	3853	7998	12466	16579	21578	26419	31042	36243	41492	V.A.T & Turnover tax
3.2	Akoiza	973	1939	2852	4212	5467	6867	8279	9919	11562	Excises
3.3	Taksa e regjistrimit te automjeteve	19	78	194	368	460	506	511	525	533	Tax on vehicles registration
3.4	Taksa nacionale	790	1844	2584	3568	4520	5320	6080	6977	7826	National taxes
3.5	Taksa lokale	392	853	1566	1923	2346	2726	2932	3212	3558	Local Taxes
4.	Tatime mbi tregtine dhe trans.nderkom	866	1839	3067	4055	5147	6288	7437	8644	9819	Trade & international transport taxes
4.1	Taksa doganore	856	1817	2962	3963	5107	6285	7425	8636	9814	Customs duties
4.2	Taksa nacionale	10	22	105	92	40	3	12	8	6	National taxes
5.	Te tjera	123	196	485	764	1146	1411	1631	1754	1823	Others
5.1	Taksa nacionale	116	181	457	725	1100	1359	1566	1676	1733	National taxes
5.2	Taksa lokale	8	15	28	39	46	53	65	78	91	Local Taxes
III.	Te ardhura jotatimore	1161	2208	3458	5432	6357	7479	8542	9805	11090	Nontax Revenue
1.	Te ardhura nga nd/jet dhe pronesia	172	718	1384	2656	3182	3667	4115	4696	5222	Entrepreneurial and Property Income
1.1	Transferim fitimi nga Banka e Shqiperis	0	473	1045	1616	2057	2461	2821	3056	3489	Profit transfer from BOA
1.2	Veprimt. Ekonom. e sektorit buxhetor	13	20	40	90	97	106	120	136	152	Income of budgetary institutions
1.3	Dividentet	32	32	32	636	644	644	653	837	837	Dividends
1.4	Interesa	53	56	61	61	94	129	157	157	157	Interests
1.5	Te tjera	74	137	207	254	290	326	365	511	586	Others
2.	Sherbime administ. dhe te ardhura jo-in	886	1157	1577	2073	2340	2790	3270	3789	4371	Administrative services and non-industrial receipts
2.1	Nacionale	111	266	420	567	717	937	1083	1366	1623	National
2.2	Lokale	10	20	38	55	73	90	103	119	134	Local
2.3	Jo-industriale dhe incidentale (sekonda	765	871	1119	1451	1549	1763	2083	2303	2613	Non-industrial and incidental
3.	Gjoha dhe sekuestri	95	319	466	662	780	949	1076	1226	1384	Penalties
4.	Te ardhura kapitale	8	13	30	41	55	73	81	94	114	Capital Revenues
B.	Sigurime Shoqerore	2227	4772	7622	10122	12628	15331	18293	20813	23622	Social insurance
1	Kontributi i Sigurimeve Shoqerore	2006	4302	6881	9167	11448	13889	16558	18859	21412	Contribution of social insurance
2	Kontributi i ISKSH	163	357	584	769	931	1093	1259	1391	1568	Contribution of the institution of health caring
4	Te tjera	58	113	157	187	248	349	476	562	641	Others

Shenim: Shuma e te ardhurave tatimore ndryshon nga tabela 1.2a, per shkak te mosperfishirjes se grupit te te ardhurave lokale "Sherbime administrative dhe te ardhura jo-industriale), te cilat sipas GFS perfishihen ne te ardhura jo tatimore.

Ne kete tabelë te ardhurat nga sigurimet shoqerore dhe shendetesore jane paraqitur me vete nga te ardhurat tatimore.

TE ARDHURAT SIPAS KLASIFIKIMIT EKONOMIK

Revenues by economic classification

Te dhena mujore (monthly data)

Viti (Year) 2004 ne milion lek (in milion leks)

Tab 3.1.b

Nr.		Jan Jan	Shk Feb	Mars Mar	Prill Apr	Maj May	Qershor June	Korrik Jul	Gusht Aug	Shtator Sep	
	Totali i te Ardhurave	12118	13370	15868	14864	14729	14967	14826	15335	16387	Total
A.	BUXHETI QENDROR	9891	10825	13019	12364	12223	12263	11864	12815	13578	Central budget
I.	Ndihma	6	189	31	12	160	168	193	74	361	Grants
II.	Te ardhura tatimore	8723	9589	11738	10377	11138	10974	10608	11478	11932	Tax revenues
1.	Tatim fitimi, te ardhurash	1161	1367	2710	1576	1451	1624	1704	1645	2002	Profit, income tax
1.1	Tatim fitimi	1024	964	1616	1174	1297	1507	1559	1384	1225	Profit Tax
1.2	Tatim mbi biznesin e vogel	138	403	1094	403	154	117	145	261	777	Small business tax
2.	Tatim mbi te ardhura personale	545	493	560	545	492	478	529	470	591	Personal income tax
4.	Tatim mbi mallrat dhe sherbimet e b	6028	6683	6952	6988	7720	7466	7007	8033	8094	Goods & services taxes
4.1	TVSH	3853	4145	4469	4113	4999	4841	4623	5202	5248	V.A.T & Turnover tax
4.2	Akciza	973	966	913	1360	1254	1400	1413	1640	1643	Excises
4.3	Taksa e rregjistrimit te automjeteve	19	58	116	174	92	46	4	14	8	Tax on vehicles registration
4.4	Taksa nacionale	790	1053	740	984	952	799	761	897	849	National taxes
4.5	Taksa lokale	392	461	713	357	423	379	206	280	346	Local Taxes
5.	Tatime mbi tregtine dhe trans.nderk	866	973	1228	988	1092	1141	1149	1207	1175	Trade & international transport taxes
5.1	Taksa doganore	856	961	1145	1001	1144	1178	1140	1211	1178	Customs duties
5.2	Taksa nacionale	10	12	83	-13	-52	-38	10	-4	-3	National taxes
6.	Te tjera	123	73	288	279	383	265	220	123	69	Others
6.1	Taksa nacionale	116	65	276	268	375	258	208	110	56	National taxes
6.2	Taksa lokale	8	7	13	11	7	7	12	13	13	Local Taxes
III.	Te ardhura jotatimore	1161	1046	1250	1974	926	1122	1063	1263	1285	Nontax Revenue
1.	Te ardhura nga nd/jet dhe pronesia	172	546	666	1272	526	485	448	582	525	Entrepreneurial and Property Income
1.1	Transferim fitimi nga Banka e Shqip	0	473	572	571	441	404	360	235	433	Profit transfer from BOA
1.2	Veprimtaria ekonomike e sektorit bu	13	7	20	50	7	10	13	16	16	Income of budgetary institutions
1.3	Dividentet	32	0	0	604	8	0	9	185	0	Dividends
1.4	Interesa	53	3	5	0	33	35	27	0	0	Interests
1.5	Te tjera	74	63	70	47	37	36	39	146	76	Others
2.	Sherbime administrative dhe te ardh	886	271	420	496	267	450	480	519	582	Administr. services and non-industrial receipts
2.1	Nacionale	111	155	154	147	151	219	146	283	257	National
2.2	Lokale	10	10	18	17	18	17	13	16	15	Local
2.3	Jo-industriale dhe incidentale (sektor	765	107	248	332	98	214	320	219	310	Non-industrial and incidental
3.	Gjoba dhe sekuestreime	95	224	147	195	119	169	127	149	159	Penalties
4.	Te ardhura kapitale	8	6	17	11	14	18	8	13	20	Capital Revenues
B.	Sigurime Shoqerore	2227	2546	2850	2500	2506	2704	2962	2520	2809	Social insurance
1	Kontributi i Sigurimeve Shoqerore	2006	2296	2580	2285	2282	2441	2669	2301	2553	Contribution of social insurance
2	Kontributi i ISKSH	163	194	226	185	162	162	166	132	177	Contribution of the institution of health caring
4	Te tjera	58	56	44	29	62	101	127	86	79	Others

Shenim: Shuma e te ardhurave tatimore ndryshon nga tabela 1.2b, per shkak te mospershirjes se grupit te te ardhurave lokale "Sherbime administrative dhe te ardhura jo-industriale), te cilat sipas GFS perfshihen ne te ardhura jo tatimore.

Ne kete table te ardhurat nga sigurimet shoqerore dhe shendetesore jane paraqitur me vete nga te ardhurat tatimore.

TE ARDHURAT E ZERAVE KRYESORE SIPAS VENDIT KU MBLIDHEN VITI 2004
MAIN INDICATORS OF REVENUES WHERE THEY ARE COLLECTED FOR THE YEAR 2004

1. TE ARDHURAT NE ZYRAT E DOGANAVE (REVENUES FROM CUSTOMS OFFICES)

Te dhenat progresive (progressive data)

Ne milion leke (In million leks)

Tab. 3.3a

	Janar	Shkurt	Mars	Prill	Maj	Qersh	Korrik	Gusht	Shtator	
	Jan	Feb	Mar	Apr	May	Jun	Jul	Aug	Sep	
1.1 Takse doganore	856	1817	2962	3963	5107	6285	7425	8636	9814	Customs Duties
1.2 TVSH	2349	4827	7853	10743	14061	17342	20406	23792	27213	V.A.T & Turnover tax
1.3 Akcize	548	1092	1793	2342	3033	3693	4449	5352	6360	Excises
1.4 Te tjera	52	26	109	96	40	3	12	8	6	Others
TOTALI I PERGJITHSHEM	3806	7762	12718	17144	22241	27323	32292	37788	43392	Total

2. TE ARDHURAT TATIMORE NE ZYRAT E TATIMEVE DHE INSTITUCIONET BUXHETORE

(TAX REVENUES FROM TAX OFFICES & OTHER INSTITUTIONS)

	Janar	Shkurt	Mars	Prill	Maj	Qersh	Korrik	Gusht	Shtator	
	Jan	Feb	Mar	Apr	May	Jun	Jul	Aug	Sep	
1.2 TVSH	1504	3171	4613	5836	7517	9077	10636	12452	14279	V.A.T & Turnover tax
2.2 Akciza	425	847	1059	1871	2434	3174	3831	4567	5203	Excises
2.3 Tatimi mbi fitimin	1024	1987	3604	4777	6074	7581	9140	10523	11748	Profit Tax
2.4 Tatimi mbi te ardhurat personale	545	1038	1597	2143	2635	3113	3642	4112	4703	Personal income tax
2.5 Tatimi mbi biznesin e vogel	138	541	1635	2037	2191	2309	2454	2714	3491	Small business tax
2.6 Takse nacionale	866	2013	3014	4259	5574	6636	7571	8568	9462	National taxes
2.7 Lojrat e fatit dhe kazinote	10	23	30	42	53	64	76	86	98	Tax on Gamble & Casino
Totali i Tatimeve	4510	9620	15551	20964	26479	31954	37348	43023	48984	Revenues from Tax Office
Totali i tatimeve dhe i doganave	8316	17381	28269	38108	48720	59277	69641	80811	92375	Revenue from Customs and Tax Offices

TE ARDHURAT E ZERAVE KRYESORE SIPAS VENDIT KU MBLIDHEN VITI 2004
MAIN INDICATORS OF REVENUES WHERE THOSE ARE COLLECTED FOR THE YEAR 2004

1.TE ARDHURAT NE ZYRAT E DOGANAVE (REVENUES FROM CUSTOMS OFFICES)

mujore (monthly data)

Ne milion leke (In million leks)

Tab. 3.3 b

	Janar	Shkurt	Mars	Prill	Maj	Qersh	Korrik	Gusht	Shtator	
	Jan	Feb	Mar	Apr	May	Jun	Jul	Aug	Sep	
1.1 Takse doganore	856	961	1145	1001	1144	1178	1140	1211	1178	Customs Duties
1.2 TVSH	2349	2478	3027	2890	3317	3281	3064	3385	3421	V.A.T & Turnover tax
1.3 Akcize	548	544	702	548	691	660	756	903	1008	Excises
1.4 Te tjera	52	-26	83	-13	-56	-38	10	-4	-3	Others
TOTALI I PERGJITHSHEM	3806	3956	4956	4426	5097	5082	4970	5496	5603	Total

2. TE ARDHURAT NE ZYRAT E TATIMEVE DHE INSTITUCIONET BUXHETORE

(REVENUES FROM TAX OFFICES & OTHER INSTITUTIONS)

	Janar	Shkurt	Mars	Prill	Maj	Qersh	Korrik	Gusht	Shtator	
	Jan	Feb	Mar	Apr	May	Jun	Jul	Aug	Sep	
2.1 TVSH & T.Qarkullimi	1504	1667	1442	1223	1681	1559	1559	1816	1827	V.A.T & Turnover tax
2.2 Akciza	425	422	212	812	563	740	657	737	636	Excises
2.3 Tatimi mbi fitimin	1024	964	1616	1174	1297	1507	1559	1384	1225	Profit Tax
2.4 Tatimi mbi te ardhurat personale	545	493	560	545	492	478	529	470	591	Personal income tax
2.5 Tatimi mbi biznesin e vogel	138	403	1094	403	154	117	145	261	777	Small business tax
2.6 Takse nacionale	866	1147	1001	1245	1316	1062	935	997	894	National taxes
2.7 Lojrat e fatit dhe kazinote	10	13	7	12	12	10	12	10	11	Tax on Gamble & Casino
Totali i Tatimeve	4510	5110	5931	5413	5515	5474	5395	5674	5961	Revenues from Tax Office
Totali i tatimeve dhe i doganave	8316	9066	10887	9839	10612	10557	10364	11170	11565	Revenue from Customs and Tax Offices

Ndryshimi i te Ardhurave krahasuar me 2003 ne %, ne terma nominale
(The change of revenues compared with 2003 in nominal terms)

1.TE ARDHURAT NE ZYRAT E DOGANAVE (REVENUES FROM CUSTOMS OFFICES)

Tab. 3.3 c

	Janar	Shkurt	Mars	Prill	Maj	Qershor	Korrik	Gusht	Shtator	
	Jan	Feb	Mar	Apr	May	Jun	Jul	Aug	Sep	
1.1 Takse doganore	(8.94)	(5.36)	(2.68)	(1.88)	(2.60)	(2.83)	(2.23)	(0.22)	(1.85)	Customs Duties
1.2 TVSH	9.77	4.55	3.93	5.91	6.88	7.22	6.86	10.49	9.48	V.A.T & Turnover tax
1.3 Akcize	5.01	3.57	12.37	4.60	4.06	6.59	10.47	17.59	20.08	Excises
1.4 Te tjera	101.79	(52.19)	27.07	(37.44)	(59.28)	(90.74)	(78.04)	(73.72)	(91.25)	Others
TOTALI I PERGJITHSHEM	4.89	1.52	3.55	3.43	3.87	4.55	4.93	8.68	7.90	Total

2. TE ARDHURAT NE ZYRAT E TATIMEVE DHE INSTITUCIONET BUXHETORE

(REVENUES FROM TAX OFFICES & OTHER INSTITUTIONS)

	Janar	Shkurt	Mars	Prill	Maj	Qersh	Korrik	Gusht	Shtator	
	Jan	Feb	Mar	Apr	May	Jun	Jul	Aug	Sep	
1.2 TVSH	17.28	37.53	43.25	33.81	31.89	27.99	26.73	28.31	26.94	V.A.T & Turnover tax
2.2 Akciza	66.06	63.60	28.40	28.38	29.72	40.45	45.93	43.79	40.01	Excises
2.3 Tatimi mbi fitimin	4.29	(5.46)	11.38	8.77	8.35	15.34	19.38	20.22	20.59	Profit Tax
2.4 Tatimi mbi te ardhurat personale	26.59	16.68	22.61	20.97	18.04	8.00	6.15	5.13	6.87	Personal income tax
2.5 Tatimi mbi biznesin e vogel	20.80	30.92	44.83	38.78	35.38	36.16	32.39	32.09	35.44	Small business tax
2.6 Takse nacionale	8.52	10.48	3.59	6.15	9.96	8.42	7.77	6.19	4.58	National taxes
2.7 Lojrat e fatit dhe kazinote	(9.72)	38.77	29.96	31.52	31.26	27.96	22.84	18.37	12.68	Tax on Gamble & Casino
Totali i Tatimeve	15.70	18.41	21.84	18.84	18.77	19.04	19.64	19.78	19.48	Revenues from Tax Office
Totali i tatimeve dhe i doganave	10.49	10.22	12.87	11.38	11.47	11.89	12.34	14.32	13.75	Revenue from Customs and Tax Offices

Ndryshimi i te Ardhurave ne% krahasuar me vitin 2003 ne terma reale
(The Change of revenues compared with 2003 in %, in real terms)

1.TE ARDHURAT NE ZYRAT E DOGANAVE (REVENUES FROM CUSTOMS OFFICES)

Tab. 3.3 d

	Janar	Shkurt	Mars	Prill	Maj	Qershor	Korrik	Gusht	Shtator	
	Jan	Feb	Mar	Apr	May	Jun	Jul	Aug	Sep	
1.1 Takse doganore	12.02	17.04	18.82	18.60	11.24	12.43	16.13	16.63	15.60	Customs Duties
1.2 TVSH	35.03	29.29	26.90	28.01	22.08	24.06	26.92	29.16	28.94	V.A.T & Turnover tax
1.3 Akcize	29.17	28.08	37.20	26.42	18.86	23.33	31.22	37.45	41.42	Excises
1.4 Te tjera	148.22	(40.87)	55.14	(24.39)	(53.50)	(89.29)	(73.92)	(69.28)	(89.69)	Others
TOTALI I PERGJITHSHEM	29.02	25.55	26.43	25.01	18.64	20.96	24.64	27.04	27.08	Total

2. TE ARDHURAT NE ZYRAT E TATIMEVE DHE INSTITUCIONET BUXHETORE

(REVENUES FROM TAX OFFICES& OTHER BUDGETARY INSTITUTIONS)

	Janar	Shkurt	Mars	Prill	Maj	Qersh	Korrik	Gusht	Shtator	
	Jan	Feb	Mar	Apr	May	Jun	Jul	Aug	Sep	
1.2 TVSH	14.92	36.26	42.64	34.07	30.44	22.66	18.93	20.69	20.38	V.A.T & Turnover tax
2.2 Akciza	62.71	62.10	27.85	28.63	28.29	34.59	36.94	35.25	32.77	Excises
2.3 Tatimi mbi fitimin	2.18	(6.33)	10.91	8.98	7.16	10.54	12.02	13.08	14.36	Profit Tax
2.4 Tatimi mbi te ardhurat personale	24.04	15.61	22.09	21.20	16.74	3.50	(0.39)	(1.12)	1.35	Personal income tax
2.5 Tatimi mbi biznesin e vogel	18.36	29.72	44.21	39.05	33.89	30.49	24.24	24.25	28.44	Small business tax
2.6 Takse nacionale	6.33	9.47	3.15	6.36	8.75	3.90	1.14	(0.12)	(0.82)	National taxes
2.7 Lojrat e fatit dhe kazinote	(11.54)	37.49	29.40	31.77	29.82	22.63	15.27	11.34	6.86	Tax on Gamble & Casino
Totali i Tatimeve	13.36	17.32	21.32	19.07	17.46	14.08	12.27	12.67	13.31	Revenues from Tax Office
Totali i tatimeve dhe i doganave	8.26	9.21	12.39	11.59	10.24	7.23	5.42	7.53	7.87	Revenue from Customs and Tax Offices

Deficiti dhe financimi i tij per vitin 2004

The Deficit and Its Financing for 2004

Te dhena progresive (Progressive Data)

Ne milion leke (In million Leks)

Tab. 4.1a

	Jan Jan	Shkurt Feb	Mars Mar	Prill April	Maj May	Qersh June	Korrik July	Gusht Aug	Shtator Sep	
Totali i te Ardhurave	12118	25488	41356	56220	70949	85916	100742	116076	132464	Total Revenues
Totali i Shpenzimeve	12479	26862	43375	60764	76899	94368	114471	131382	151329	Total Expenditures
Deficiti	(362)	(1374)	(2019)	(4544)	(5949)	(8452)	(13729)	(15306)	(18865)	Cash-Balance
Financimi i deficitit	362	1374	2019	4544	5949	8452	13729	15306	18865	Financing
1. I BRENDSEHEM	(519)	253	551	2489	3189	6245	10982	11698	14811	Domestic
a. Bono thesari	3406	3643	4168	5597	2306	3085	1959	1447	3195	Treasury bills
b. Ndryshimi i gjendjes se arkës	-2978	-2374	-3128	-3761	-3051	-2738	-1467	-1538	-1947	Chang.of stat. account
Depozitat e qev. ne Banken e Shqip.	(2865)	(1952)	(2474)	(3214)	(2444)	(2311)	(869)	(1615)	(2462)	Deposit of Government in B.O.A
Depoz. e Sigurimit Shoq. & Shend.	(113)	(422)	(654)	(547)	(607)	(427)	(599)	77	515	Deposit of Social & Health Ins.
c. Mjete ne ruajtje	-6	40	60	42	131	121	161	247	363	Non-budget revenues
d. Te ardhura nga privatizimi	14	27	102	232	3744	4151	7629	7838	8278	Privatization receipts
e. Te tjera detyrime	-955	-1083	-651	379	59	1625	2700	3703	4923	Others
2.I JASHEM	880	1121	1467	2055	2760	2207	2748	3608	4054	Foreign
a. Hua afatgjate	303	663	1252	1674	2552	2082	2518	3299	3818	Long-term Loan
-Marre	560	1018	1716	2145	3408	3537	4257	5145	5767	Drawings
-Shlyer (Ripagesat)	257	355	464	471	857	1455	1739	1846	1949	Repayments
b. Ndryshimi i gjendjes se arkës	578	458	216	381	208	126	230	309	236	Chang.of stat. account

Deficiti dhe financimi i tij per vitin 2004
The Deficit and Its Financing for 2004

Te dhena mujore(Monthly Data)

Ne milion leke (In milion Leks)

Tab. 4.1b

	Jan Jan	Shkurt Feb	Mars Mar	Prill April	Maj May	Qersh June	Korrik July	Gusht Aug	Shtator Sep	
Totali i te Ardhurave	12118	13370	15868	14864	14729	14967	14826	15335	16387	Total Revenues
Totali i Shpenzimeve	12479	14383	16513	17389	16134	17469	20103	16911	19947	Total Expenditures
Deficiti	-362	-1012	-644	-2525	-1405	-2502	-5277	-1576	-3559	Cash-Balance
Financimi i deficitit	362	1012	644	2525	1405	2502	5277	1576	3559	Financing
1. I BRENDSEHEM	-519	771	298	1938	700	3055	4737	716	3113	Domestic
a. Bono thesari	3406	237	525	1429	-3291	779	-1127	-512	1748	Treasury bills
b. Ndryshimi i gjendjes se arkes	-2978	604	-754	-633	710	313	1271	-70	-410	Chang.of stat. account
Depozitat e qev. ne Banken e Shqip.	-2865	913	-522	-740	770	133	1442	-746	-847	Deposit of Government in B.O.A
Depoz. e Sigurimit Shoq. & Shend.	-113	-309	-232	106	-60	180	-172	676	437	Deposit of Social & Health Ins.
c. Mjete ne ruajtje	-6	45	20	-18	89	-10	40	86	115	Non-budget revenues
d. Te ardhura nga privatizimi	14	13	75	131	3512	406	3479	209	439	Privatization receipts
e. Te tjera detyrime	-955	-128	432	1030	-320	1566	1075	1003	1220	Others
2.I JASHEM	880	241	346	587	705	-553	540	860	446	Foreign
a. Hua afatgjate	303	361	589	422	877	-470	436	781	519	Long-term Loan
-Marre	560	458	697	429	1263	128	720	889	622	Drawings
-Shlyer (Ripagesat)	257	98	109	7	386	599	284	107	103	Repayments
b. Ndryshimi i gjendjes se arkes	578	-120	-243	165	-172	-83	104	79	-73	Chang.of stat. account

Borxhi i brendshem per vitin 2004 (Domestic Debt)

Te dhena progresive (Progressive Data)

ne milion leke (in million leks)

Klasifikimi	3-Muj I (Q1)	ne % (in %)	3-Muj 2 (Q2)	ne % (in %)	3-Muj 2 (Q2)	ne % (in %)	Classification
STOKU I BORXHIT	285,746	100.00	286,263	100.00	288,524	100.00	DEBT STOCK
1. Bono Thesari + Obligacione	278,210	97.36	281,137	98.21	286,798	99.40	Treasury Bills
2. Kredi Direkte	5,810	2.03	3,400	1.19	0	0.00	Direct Credit
3. Obligacione Rikapitalizimi BKT	1,726	0.60	1,726	0.60	1,726	0.60	Bond for NBC capitalization

TE DHENAT

PER

BORXHIN E JASHEM

TABELA I - TABLE I

BORXHI I JASHEM* AFATGJATE I SHQIPERISE
TE DHENA PERMBLEDHESE

LONG-TERM EXTERNAL DEBT* OF ALBANIA
SUMMARIZED DATA

(USD'000)										Classification
Klasifikimi	1997**	1998	1999	2000	2001	2002	2003	2004*** I	GJITHSEJ TOTAL	
I. TE DHENA KUMULATIVE										I. CUMULATIVE DATA (STOCK)
Borxhi Neto	347,457.08	460,452.71	550,083.15	616,975.62	697,707.27	979,618.65	1,200,404.02	1,252,099.75	1,252,099.75	Debt Outstanding Disbursed (DOD)
Terheqjet	483,458.43	585,517.61	709,992.25	813,854.39	902,813.56	1,049,608.64	1,183,654.50	1,256,458.10	1,256,458.10	Drawings
Pagesat e Borxhit	48,162.84	63,721.13	77,368.32	92,750.12	109,187.25	150,596.93	192,875.06	228,276.29	228,276.29	Debt Service
-Principal	21,183.45	30,660.87	38,291.66	46,855.48	53,613.83	76,996.49	102,866.68	125,210.65	125,210.65	-Principal
-Interes	26,979.39	33,060.26	39,076.66	45,894.64	55,573.42	73,600.44	90,008.38	103,065.64	103,065.64	-Interest
Borxhi i nenshkruar i paterhequr	273,880.34	348,031.31	361,257.15	363,334.27	357,132.51	469,137.10	486,799.61	544,177.08	544,177.08	Committed Undisbursed Balance (CUB)
II. TE DHENA VJETORE										II. ANNUAL DATA (FLOWS)
Terheqjet	483,458.43	102,059.18	124,474.64	103,862.14	88,959.17	146,795.08	134,045.86	72,803.60	1,256,458.10	Drawings
Pagesat e Borxhit	48,162.84	15,558.29	13,647.19	15,381.80	16,437.13	41,409.68	42,278.13	35,401.23	228,276.29	Debt Service
-Principal	21,183.45	9,477.42	7,630.79	8,563.82	6,758.35	23,382.66	25,870.19	22,343.97	125,210.65	-Principal
-Interes	26,979.39	6,080.87	6,016.40	6,817.98	9,678.78	18,027.02	16,407.94	13,057.26	103,065.64	-Interest

*) Perfshin borxhin shtetëror dhe shtetëror të garantuar (Tabela I.1 + Tabela I.2)

**) Perfshihen të dhënat për periudhën 1991-1997

***) Deri më 30.09.2004

Ne këtë Tabelë nuk përshihet kredia e FMN-se

*) Includes external direct and external guaranteed debt (Table I.1 + Table I.2)

**) Cumulative data (1991-1997)

***) As of September 30, 2004

IMF credit is not included

TABELA I.1 - TABLE I.1

BORXHI I JASHEM SHETEROR I SHQIPERISE
TE DHENA PERMBLEDHESE

EXTERNAL PUBLIC DEBT OF ALBANIA
SUMMARIZED DATA

(USD'000)									GJITHSEJ TOTAL	Classification
Klasifikimi	1997*	1998	1999	2000	2001	2002	2003	2004** I		
I. TE DHENA KUMULATIVE										I. CUMULATIVE DATA (STOCK)
Borxhi Neto	276,428.25	357,738.27	447,607.99	517,956.34	594,875.91	858,849.96	1,025,832.08	1,066,516.27	1,066,516.27	Debt Outstanding Disbursed (DOD)
Terheqjet	404,390.72	478,995.47	589,394.15	687,092.33	765,842.34	901,237.37	1,001,705.32	1,055,917.13	1,055,917.13	Drawings
Pagesat e Borxhit	43,590.91	56,871.70	67,131.96	78,832.56	91,998.80	127,154.40	161,179.22	190,987.05	190,987.05	Debt Service
-Principal	19,516.78	28,160.87	34,274.77	41,122.67	46,719.89	65,706.63	86,009.45	104,691.90	104,691.90	-Principal
-Interes	24,074.13	28,710.83	32,857.19	37,709.89	45,278.91	61,447.77	75,169.77	86,295.15	86,295.15	-Interest
Borxhi i nenshkruar i paterhequr	158,554.70	241,759.45	274,851.49	258,297.64	269,741.53	357,284.10	362,387.14	442,566.36	442,566.36	Committed Undisbursed Balance (CUB)
II. TE DHENA VJETORE										II. ANNUAL DATA (FLOWS)
Terheqjet	404,390.72	74,604.75	110,398.68	97,698.18	78,750.01	135,395.03	100,467.95	54,211.81	1,055,917.13	Drawings
Pagesat e Borxhit	43,590.91	13,280.79	10,260.26	11,700.60	13,166.24	35,155.60	34,024.82	29,807.83	190,987.05	Debt Service
-Principal	19,516.78	8,644.09	6,113.90	6,847.90	5,597.22	18,986.74	20,302.82	18,682.45	104,691.90	-Principal
-Interes	24,074.13	4,636.70	4,146.36	4,852.70	7,569.02	16,168.86	13,722.00	11,125.38	86,295.15	-Interest

*) Te dhena kumulative (1991-1997)

**) Deri me 30.09.2004

Ne kete tabelë nuk perfshihet kredia e FMN-se

*) Cumulative data (1991-1997)

**) As of September 30, 2004

IMF credit is not included

TABELA I.2 - TABLE I.2

BORXHI I JASHEM I GARANTUAR I SHQIPERISE
TE DHENA PERMBLEDHESE

EXTERNAL PUBLICLY GUARANTEED DEBT OF ALBANIA
SUMMARIZED DATA

(USD'000)										Classification
Klasifikimi	1997*	1998	1999	2000	2001	2002	2003	2004** I	GJITHSEJ TOTAL	
I. TE DHENA KUMULATIVE										I. CUMULATIVE DATA (STOCK)
Borxhi Neto	71,028.83	102,714.44	102,475.16	99,019.28	102,831.36	120,768.69	174,571.94	185,583.48	185,583.48	Debt Outstanding Disbursed (DOD)
Terheqjet	79,067.71	106,522.14	120,598.10	126,762.06	136,971.22	148,371.27	181,949.18	200,540.97	200,540.97	Drawings
<u>Pagesat e Borxhit</u>	<u>4,571.93</u>	<u>6,849.43</u>	<u>10,236.36</u>	<u>13,917.56</u>	<u>17,188.45</u>	<u>23,442.53</u>	<u>31,695.84</u>	<u>37,289.24</u>	<u>37,289.24</u>	Debt Service
-Principal	1,666.67	2,500.00	4,016.89	5,732.81	6,893.94	11,289.86	16,857.23	20,518.75	20,518.75	-Principal
-Interes	2,905.26	4,349.43	6,219.47	8,184.75	10,294.51	12,152.67	14,838.61	16,770.49	16,770.49	-Interest
Borxhi i nenshkruar i paterhequr	115,325.64	106,271.86	86,405.66	105,036.63	87,390.98	111,853.00	124,412.47	101,610.72	101,610.72	Committed Undisbursed Balance (CUB)
II. TE DHENA VJETORE										II. ANNUAL DATA (FLOWS)
Terheqjet	79,067.71	27,454.43	14,075.96	6,163.96	10,209.16	11,400.05	33,577.91	18,591.79	200,540.97	Drawings
<u>Pagesat e Borxhit</u>	<u>4,571.93</u>	<u>2,277.50</u>	<u>3,386.93</u>	<u>3,681.20</u>	<u>3,270.89</u>	<u>6,254.08</u>	<u>8,253.31</u>	<u>5,593.40</u>	<u>37,289.24</u>	Debt Service
-Principal	1,666.67	833.33	1,516.89	1,715.92	1,161.13	4,395.92	5,567.37	3,661.52	20,518.75	-Principal
-Interes	2,905.26	1,444.17	1,870.04	1,965.28	2,109.76	1,858.16	2,685.94	1,931.88	16,770.49	-Interest

*) Te dhena kumulative (1991-1997)

**) Deri me 30.09.2004

*) Cumulative data (1991-1997)

**) As of September 30, 2004

TABELA II - TABLE II

BORXHI I JASHEM* AFATGJATE I SHQIPERISE
TERHEQJET NE VITE NGA KREDITE E HUAJA SIPAS KREDITOREVE

LONG-TERM EXTERNAL DEBT* OF ALBANIA
DRAWINGS BY YEARS AND BY CREDITORS

(USD'000)												
Sipas kreditoreve	PARA 1998 UP TO 1998	1998	1999	2000	2001	2002	2003	2004			GJITHSEJ TOTAL	By Creditors
								I	II	III		
-Shumepalesh (I)	176,991.81	69,261.75	103,753.82	82,919.87	54,692.74	109,590.01	104,476.45	20,585.30	20,055.84	18,248.73	760,576.31	-Multilateral (I)
CEB	-	-	-	-	-	-	850.00	-	2,000.00	164.00	3,014.00	CEB
EBRD	11,359.81	-	382.46	1,836.88	2,122.06	7,243.69	15,265.15	3,398.03	2,679.10	4,083.42	48,370.60	EBRD
EIB	-	981.75	15,334.79	12,585.73	10,186.30	10,091.02	14,445.10	6,178.00	3,555.60	3,629.10	76,987.38	EIB
IDA	157,655.56	63,679.34	80,630.39	64,468.54	34,159.04	79,275.75	60,882.35	9,037.50	9,781.67	9,604.36	569,174.51	IDA
IDB	-	500.00	534.80	1,211.48	3,436.36	4,690.34	3,906.50	467.22	19.81	56.11	14,822.62	IDB
IFAD	5,699.73	2,243.00	4,890.40	1,376.14	2,370.28	3,958.67	5,837.90	792.11	607.89	406.11	28,182.24	IFAD
OPEC	2,276.71	1,857.66	1,980.97	1,441.10	2,418.70	4,330.54	3,289.45	712.43	1,411.77	305.64	20,024.97	OPEC
-Dypalesh (II)	225,624.63	32,797.43	20,720.82	20,942.26	34,266.42	37,205.07	29,569.42	3,976.16	4,458.36	5,479.21	415,039.78	-Bilateral (II)
AUSTRI	5,964.78	-	-	-	-	-	-	-	-	-	5,964.78	AUSTRIA
GJERMANI	57,223.38	10,559.59	1,099.46	5,142.75	4,918.30	8,748.71	9,786.38	1,239.48	1,693.74	1,833.04	102,244.84	GERMANY
GREQI	1,042.07	9,905.57	1,795.39	1,512.58	1,285.84	-	-	-	-	-	15,541.44	GREECE
ITALI	64,912.22	8,960.89	8,151.02	3,372.49	10,197.86	21,548.56	5,636.78	768.05	1,183.21	803.71	125,534.78	ITALY
JAPONI	19,180.24	1,261.56	7,711.56	1,793.81	-	-	5,469.69	1,441.86	1,449.30	2,716.64	41,024.65	JAPAN
KINE	37,260.36	-	-	-	-	-	-	-	-	-	37,260.36	CHINA
KUVAIT	13,147.39	2,109.82	1,963.39	725.76	2,652.55	6,907.81	8,676.58	526.77	132.11	125.82	36,967.99	KUWAIT
NORVEGJI	2,500.00	-	-	8,394.87	15,211.87	-	-	-	-	-	26,106.74	NORWAY
SUEDI	4,125.00	-	-	-	-	-	-	-	-	-	4,125.00	SWEDEN
TURQI	20,269.19	-	-	-	-	-	-	-	-	-	20,269.19	TURKEY
-Klubi i Parisit (III)	80,841.98	-	-	-	-	-	-	-	-	-	80,841.98	-Paris Club (III)
AUSTRI	8,201.47	-	-	-	-	-	-	-	-	-	8,201.47	AUSTRIA
ANGLI	24.89	-	-	-	-	-	-	-	-	-	24.89	UNITED KINGDOM
DANIMARKE	127.00	-	-	-	-	-	-	-	-	-	127.00	DENMARK
FRANCE	20,059.83	-	-	-	-	-	-	-	-	-	20,059.83	FRANCE
GJERMANI	13,490.04	-	-	-	-	-	-	-	-	-	13,490.04	GERMANY
HOLLANDE	1,094.18	-	-	-	-	-	-	-	-	-	1,094.18	NETHERLANDS
ITALI	2,139.96	-	-	-	-	-	-	-	-	-	2,139.96	ITALY
RUSI	35,704.62	-	-	-	-	-	-	-	-	-	35,704.62	RUSSIA
GJITHSEJ (I+II+III)	483,458.43	102,059.18	124,474.64	103,862.13	88,959.15	146,795.08	134,045.86	24,561.46	24,514.20	23,727.94	1,256,458.08	TOTAL (I+II+III)

*) Perfshin borxhin shtetëror dhe shtetëror të garantuar (Tabela II.1 + Tabela II.2)

**) Deri më 30.09.2004

Ne këto tabela nuk përfshihet kredia e FMN-se

*) Includes external direct and external guaranteed debt (Table II.1 + Table II.2)

**) As of September 30, 2004

IMF credit is not included

TABELA II.1 - TABLE II.1

BORXHI I JASHEM SHETEROR I SHQIPERISE
TERHEQJET NE VITE NGA KREDITE E HUAJA SIPAS KREDITOREVE

LONG-TERM EXTERNAL PUBLIC DEBT OF ALBANIA
DRAWINGS BY YEARS AND BY CREDITORS

(USD'000)												
Sipas kreditoreve	PARA 1998 UP TO 1998	1998	1999	2000	2001	2002	2003	2004			GJITHSEJ TOTAL	By Creditors
								I	II	III		
-Shumepalesh (I)	165,632.00	68,280.00	99,372.22	81,082.99	52,570.68	102,346.33	78,682.04	12,793.70	19,496.38	16,202.21	696,458.56	-Multilateral (I)
CEB	-	-	-	-	-	-	850.00	-	2,000.00	164.00	3,014.00	CEB
EBRD	-	-	-	-	-	-	3,915.85	1,784.44	2,119.64	2,036.90	9,856.82	EBRD
EIB	-	-	11,335.66	12,585.73	10,186.30	10,091.02	-	-	3,555.60	3,629.10	51,383.41	EIB
IDA	157,655.56	63,679.34	80,630.39	64,468.54	34,159.04	79,275.75	60,882.35	9,037.50	9,781.67	9,604.36	569,174.51	IDA
IDB	-	500.00	534.80	1,211.48	3,436.36	4,690.34	3,906.50	467.22	19.81	56.11	14,822.62	IDB
IFAD	5,699.73	2,243.00	4,890.40	1,376.14	2,370.28	3,958.67	5,837.90	792.11	607.89	406.11	28,182.24	IFAD
OPEC	2,276.71	1,857.66	1,980.97	1,441.10	2,418.70	4,330.54	3,289.45	712.43	1,411.77	305.64	20,024.97	OPEC
-Dypalesh (II)	157,916.74	6,324.75	11,026.46	16,615.19	26,179.33	33,048.71	21,785.91	1,865.36	1,895.30	1,958.86	278,616.59	-Bilateral (II)
AUSTRI	5,964.78	-	-	-	-	-	-	-	-	-	5,964.78	AUSTRIA
GJERMANI	16,972.76	2,499.88	1,078.74	3,168.66	2,516.66	7,853.90	9,731.55	1,229.55	1,693.74	1,833.04	48,578.49	GERMANY
GREQI	1,042.07	-	1,795.39	1,512.58	1,285.84	-	-	-	-	-	5,635.88	GREECE
ITALI	37,511.45	1,715.04	6,188.94	2,813.32	4,512.42	18,287.00	3,377.78	109.04	69.45	-	74,584.44	ITALY
JAPONI	19,123.74	-	-	-	-	-	-	-	-	-	19,123.74	JAPAN
KINE	37,260.36	-	-	-	-	-	-	-	-	-	37,260.36	CHINA
KUVAIT	13,147.39	2,109.82	1,963.39	725.76	2,652.54	6,907.81	8,676.58	526.77	132.11	125.82	36,967.99	KUWAIT
NORVEGJI	2,500.00	-	-	8,394.87	15,211.87	-	-	-	-	-	26,106.74	NORWAY
SUEDI	4,125.00	-	-	-	-	-	-	-	-	-	4,125.00	SWEDEN
TURQI	20,269.19	-	-	-	-	-	-	-	-	-	20,269.19	TURKEY
-Klubi i Parisit (III)	80,841.98	-	-	-	-	-	-	-	-	-	80,841.98	-Paris Club (III)
AUSTRI	8,201.47	-	-	-	-	-	-	-	-	-	8,201.47	AUSTRIA
ANGLI	24.89	-	-	-	-	-	-	-	-	-	24.89	UNITED KINGDOM
DANIMARKE	127.00	-	-	-	-	-	-	-	-	-	127.00	DENMARK
FRANCE	20,059.83	-	-	-	-	-	-	-	-	-	20,059.83	FRANCE
GJERMANI	13,490.04	-	-	-	-	-	-	-	-	-	13,490.04	GERMANY
HOLLANDE	1,094.18	-	-	-	-	-	-	-	-	-	1,094.18	NETHERLANDS
ITALI	2,139.96	-	-	-	-	-	-	-	-	-	2,139.96	ITALY
RUSI	35,704.62	-	-	-	-	-	-	-	-	-	35,704.62	RUSSIA
GJITHSEJ (I+II+III)	404,390.72	74,604.75	110,398.68	97,698.18	78,750.01	135,395.04	100,467.95	14,659.06	21,391.68	18,161.07	1,055,917.14	TOTAL (I+II+III)

*) Deri me 30.09.2004
Ne kete tabelë nuk përfshihet kredia e FMN-se

*) As of September 30, 2004
IMF credit is not included

TABELA II.2 - TABLE II.2

BORXHI I JASHEM I GARANTUAR I SHQIPERISE
TERHEQJET NE VITE NGA KREDITE E HUAJA SIPAS KREDITOREVE

EXTERNAL PUBLICLY GUARANTEED DEBT OF ALBANIA
DRAWINGS BY YEARS AND BY CREDITORS

Sipas kreditoreve	PARA 1998 UP TO 1998	1998	1999	2000	2001	2002	2003	2004			GJITHSEJ TOTAL	By Creditors
								I	II	III		
-Shumepalesh (I)	11,359.81	981.75	4,381.59	1,836.88	2,122.06	7,243.69	25,794.40	7,791.60	559.46	2,046.52	64,117.76	-Multilateral (I)
EBRD	11,359.81	-	382.46	1,836.88	2,122.06	7,243.69	11,349.31	1,613.60	559.46	2,046.52	38,513.78	EBRD
EIB	-	981.75	3,999.13	-	-	-	14,445.10	6,178.00	-	-	25,603.98	EIB
-Dypalesh (II)	67,707.90	26,472.69	9,694.36	4,327.08	8,087.10	4,156.37	7,783.51	2,110.80	2,563.06	3,520.35	136,423.21	-Bilateral (II)
GJERMANI	40,250.63	8,059.71	20.72	1,974.09	2,401.65	894.81	54.83	9.93	-	-	53,666.37	GERMANY
GREQI	-	9,905.57	-	-	-	-	-	-	-	-	9,905.57	GREECE
ITALI	27,400.77	7,245.85	1,962.08	559.18	5,685.45	3,261.56	2,259.00	659.01	1,113.76	803.71	50,950.36	ITALY
JAPONI	56.50	1,261.56	7,711.56	1,793.81	-	-	5,469.69	1,441.86	1,449.30	2,716.64	21,900.92	JAPAN
GJITHSEJ (I+II)	79,067.71	27,454.43	14,075.96	6,163.96	10,209.16	11,400.06	33,577.91	9,902.40	3,122.52	5,566.87	200,540.97	TOTAL (I+II)

*) Deri me 30.09.2004

*) As of September 30, 2004

TABELA III - TABLE III

BORXHI I JASHEM* AFATGJATE I SHQIPERISE
TERHEQJET NE VITE SIPAS SEKTOREVE EKONOMIKE

LONG-TERM EXTERNAL DEBT* OF ALBANIA
DRAWINGS BY ECONOMIC SECTORS

(USD'000)												
Sipas sektoreve ekonomike	PARA 1998 UP TO 1998	1998	1999	2000	2001	2002	2003	2004			GJITHSEJ TOTAL	By Economic Sectors
								I	II	III		
ADMINISTRATA SHTETERORE	5,403.64	1,644.01	2,363.20	2,857.08	2,325.28	4,919.32	6,142.81	792.37	847.83	673.84	27,969.38	Public Administration
ARESIMI	9,739.42	1,735.79	1,107.59	684.86	394.01	733.76	7,827.11	1,555.75	1,771.57	935.92	26,485.78	Education
BILANCI I PAGESAVE	12,589.78	9,905.57	-	-	-	-	-	-	-	-	22,495.35	Balance of Payment
BUJQESI, UJITJE	42,146.73	7,365.57	9,379.75	7,176.23	7,139.81	13,375.64	12,688.01	1,663.72	931.48	1,127.10	102,994.04	Agriculture-Irrigation
ENERGJETIKE	15,391.99	4,585.25	9,721.29	13,641.81	23,577.53	35,740.65	35,355.70	11,293.33	4,921.73	6,314.25	160,543.52	Energy
IMPORT MALLRASH DHE PAJISJESH	65,114.70	1,715.04	6,188.94	2,813.32	3,209.21	213.61	8.66	-	-	-	79,263.46	Import of Goods and Services
INDUSTRI E LEHTE	3,052.47	-	-	-	-	-	-	-	-	-	3,052.47	Light Industry
INFRASTRUKTURE URBANE DHE RURALE	-	-	2,100.02	5,864.66	6,776.24	2,202.68	6,962.25	1,167.08	3,577.94	1,104.76	29,755.64	Urban and Rural Infrastructure
KLUBI I PARISIT DHE RISKEDULIME TE TJER	117,286.18	-	-	-	-	-	-	-	-	-	117,286.18	Paris Club
MBESHTETJE PER BUXHETIN	64,604.67	36,901.63	49,171.67	24,164.09	-	29,101.82	18,955.57	-	-	-	222,899.44	Budgetary Support
MBROJTJA	1,858.23	-	-	367.18	230.25	700.52	1,841.35	858.51	267.99	222.57	6,346.58	Defence
MBROJTJA E MJEDISIT	-	-	-	-	359.85	216.26	228.54	28.11	277.48	-	1,110.24	Environmental Protection
PRODHIME ELEKTRIKE	-	-	-	-	-	-	-	-	-	-	-	Electrical Products
PYJE	1,013.79	1,261.49	259.88	433.76	1,176.61	1,820.61	1,038.36	181.22	107.96	-	7,293.68	Forestry
SHENDETESI	3,932.61	1,004.87	3,203.15	6,142.28	4,827.84	5,691.20	1,190.05	-	231.23	1,148.50	27,371.72	Health
SIGURIME SHOQ./TREGU I PUNES	8,003.59	1,528.97	1,089.86	1.95	-	385.92	296.37	47.16	28.31	159.56	11,537.78	Social Safety/Labor Market
STREHIMI	13,893.94	196.35	735.18	263.95	1,285.84	-	-	-	-	-	16,375.25	Housing
TE TJERA	13,104.49	-	-	-	-	-	-	-	-	-	13,104.49	Others
TELEKOMUNIKACION	16,837.41	732.17	26.75	-	361.64	-	-	-	-	-	17,957.97	Telecommunication
TRANSPORT	29,138.80	9,013.69	23,532.64	26,723.09	25,848.71	31,446.70	18,105.00	3,979.73	7,348.93	10,056.93	185,194.23	Transport
TRANSPORTI AJROR	19,312.61	8,191.12	20.72	45.48	-	-	-	-	-	-	27,569.93	Air Transport
TRANSPORTI HEKURUDHOR	3,787.59	739.23	-	-	-	-	-	-	-	-	4,526.82	Rail Transport
UJESJELLESJA/KANALIZIME	17,850.76	8,171.32	3,508.97	3,354.83	6,315.44	10,555.44	15,799.88	2,129.72	3,593.86	1,578.39	72,858.60	Water Supply and Sewerage
ZHVILL. SEK.PRIVAT	10,806.73	5,032.09	9,381.25	7,867.72	2,818.98	5,535.98	439.17	72.64	-	-	41,954.55	Enterprise Sector Development
ZHVILLIMI RURAL	8,588.34	2,335.01	2,683.80	1,463.75	2,311.89	4,154.98	7,167.06	792.11	607.89	406.11	30,510.94	Rural Development
GJITHSEJ	483,458.45	102,059.16	124,474.63	103,862.13	88,959.13	146,795.07	134,045.87	24,561.46	24,514.20	23,727.94	1,256,458.03	TOTAL

*) Perfshin borxhin shtetedor dhe shtetedor te garantuar
Ne kete table nuk perfshihet kredia e FMN-se

*) Includes external public and external publicly guaranteed debt
IMF credit is not included

TABELA IV - TABLE IV

BORXHI I JASHEM* AFATGJATE I SHQIPERISE
BORXHI NETO SIPAS KREDITOREVE

LONG-TERM EXTERNAL DEBT* OF ALBANIA
DEBT OUTSTANDING DISBURSED BY CREDITORS

(USD'000)

Sipas kreditoreve	1997	1998	1999	2000	2001	2002	2003	2004**	By Creditors
-Shumepalesh (I)	164,764.03	242,425.60	338,701.24	402,613.41	439,142.36	581,457.19	739,843.49	780,318.43	-Multilateral (I)
CEB	-	-	-	-	-	-	850.00	3,014.00	CEB
EBRD	9,482.91	8,822.91	7,524.50	7,576.17	8,756.76	13,618.71	27,809.01	34,813.52	EBRD
EIB	-	981.75	15,217.29	27,216.89	35,129.33	49,940.32	71,587.35	79,725.84	EIB
IDA	147,711.08	220,095.46	296,324.28	345,391.18	366,143.43	475,773.72	583,260.62	604,300.11	IDA
IDB	63.36	636.72	1,031.05	2,162.88	5,414.56	9,811.63	14,040.04	13,681.50	IDB
IFAD	5,229.97	7,754.39	12,488.79	13,209.85	15,223.14	20,507.14	28,615.04	29,874.55	IFAD
OPEC	2,276.71	4,134.37	6,115.34	7,056.44	8,475.14	11,805.68	13,681.45	14,908.91	OPEC
-Dypalesh (II)	150,970.82	191,532.46	191,259.33	195,973.63	218,406.97	280,764.69	345,939.21	346,677.18	-Bilateral (II)
AUSTRI	4,971.65	5,263.16	4,528.36	4,187.61	3,983.50	1,523.51	1,831.65	1,791.97	AUSTRIA
GJERMANI	45,952.82	57,775.49	49,604.43	50,254.81	52,620.08	71,544.05	96,272.39	98,655.93	GERMANY
GREQI	-	10,626.24	10,829.77	11,152.68	11,893.51	14,041.32	16,953.06	16,585.80	GREECE
ITALI	61,424.47	73,856.55	71,165.54	69,172.29	75,967.67	110,230.83	134,374.98	131,119.11	ITALY
JAPONI	16,728.70	20,546.30	30,685.93	28,995.27	25,381.91	28,081.38	37,124.34	40,940.09	JAPAN
KINE	2,000.00	2,000.00	1,858.23	1,858.23	1,858.23	1,858.23	1,858.23	1,858.23	CHINA
KUVAIT	13,268.18	14,839.73	15,962.08	15,332.86	16,470.33	23,391.77	29,901.35	29,849.57	KUWAIT
NORVEGJI	2,500.00	2,500.00	2,500.00	10,894.87	26,106.74	25,968.59	23,498.21	21,751.49	NORWAY
SUEDI	4,125.00	4,125.00	4,125.00	4,125.00	4,125.00	4,125.00	4,125.00	4,125.00	SWEDEN
-Borxhi i riskeduluar (III) (A+B)	31,927.82	26,702.42	20,122.58	18,388.59	40,157.93	117,396.77	114,621.31	125,104.14	-Rescheduled Debt (III) (A+B)
-Klubi i Parisit (A)	31,927.82	26,702.42	20,122.58	18,388.59	17,455.98	55,079.51	52,304.05	49,684.42	-Paris Club (A)
AUSTRI	5,559.65	4,316.13	2,869.56	1,871.82	1,424.47	1,266.65	1,015.22	744.92	AUSTRIA
ANGLI	-	-	-	-	-	-	-	-	UNITED KINGDOM
DANIMARKE	-	-	-	-	-	-	-	-	DENMARK
FRANCE	13,356.97	10,262.86	7,597.65	5,461.87	4,165.32	3,216.14	2,084.94	1,549.07	FRANCE
GJERMANI	10,724.85	10,392.50	8,429.62	5,250.90	6,514.52	6,035.80	5,814.93	4,983.77	GERMANY
HOLLANDE	747.67	580.43	385.98	255.08	194.11	172.60	138.33	101.50	NETHERLANDS
ITALI	1,538.68	1,150.50	839.77	5,548.92	4,993.46	5,045.30	5,110.45	4,776.51	ITALY
JAPONI	-	-	-	-	164.11	136.17	100.75	72.92	JAPAN
RUSI	-	-	-	-	-	39,206.85	38,039.44	37,455.74	RUSSIA
-Te tjere (B)	-	-	-	-	22,701.95	62,317.25	62,317.26	75,419.72	-Others (B)
TURQI	-	-	-	-	22,701.95	22,701.95	22,701.95	22,701.95	TURKEY
KINE	-	-	-	-	-	39,615.31	39,615.31	37,964.67	CHINA
HUNGARI	-	-	-	-	-	-	-	14,178.95	HUNGARY
MAQEDONI	-	-	-	-	-	-	-	574.15	MACEDONIA
GJITHSEJ (I+II+III)	347,662.68	460,660.48	550,083.15	616,975.62	697,707.25	979,618.65	1,200,404.02	1,252,099.75	TOTAL (I+II+III)

*) Perfshin borxhin shtetedor dhe shtetedor te garantuar

**) Deri me 30.09.2004

Ne kete tabelë nuk perfshihet kredia e FMN-se

*) Includes external public and external publicly guaranteed debt

**) As of September 30, 2004

IMF credit is not included

TABELA IV.1 - TABLE IV.1

BORXHI I JASHEM SHETEROR I SHQIPERISE
BORXHI NETO SIPAS KREDITOREVE

EXTERNAL PUBLIC DEBT OF ALBANIA
DEBT OUTSTANDING DISBURSED BY CREDITORS

(USD'000)

Sipas kreditoreve	1997	1998	1999	2000	2001	2002	2003	2004**	By Creditors
-Shumepalesh (I)	155,217.77	232,555.31	326,311.21	390,404.77	426,163.49	563,880.56	696,422.96	730,762.20	-Multilateral (I)
CEB	-	-	-	-	-	-	850.00	3,014.00	CEB
EBRD	-	-	-	-	-	-	4,373.47	10,256.51	EBRD
EIB	-	-	10,351.76	22,584.42	30,907.23	45,982.40	51,602.34	54,726.63	EIB
IDA	147,711.08	220,095.46	296,324.28	345,391.18	366,143.43	475,773.72	583,260.62	604,300.11	IDA
IDB	-	571.09	1,031.05	2,162.88	5,414.56	9,811.63	14,040.04	13,681.50	IDB
IFAD	5,229.97	7,754.39	12,488.79	13,209.85	15,223.14	20,507.14	28,615.04	29,874.55	IFAD
OPEC	2,276.71	4,134.37	6,115.34	7,056.44	8,475.14	11,805.68	13,681.45	14,908.91	OPEC
-Dypalesh (II)	89,283.13	98,480.91	101,174.20	109,162.99	134,516.01	177,598.31	214,806.82	210,663.68	-Bilateral (II)
AUSTRI	4,971.65	5,263.16	4,528.36	4,187.61	3,983.50	1,523.51	1,831.65	1,791.97	AUSTRIA
GJERMANI	9,870.15	11,228.76	9,525.15	11,281.44	15,546.32	26,631.94	42,679.48	46,467.91	GERMANY
GREQI	-	-	1,677.85	2,960.21	4,109.80	4,812.86	5,858.13	5,731.22	GREECE
ITALI	36,013.89	39,605.84	39,845.20	39,674.86	45,817.00	71,032.59	84,796.64	80,014.75	ITALY
JAPONI	16,676.03	19,060.19	21,152.34	18,847.89	16,499.09	18,253.83	20,258.14	19,073.56	JAPAN
KINE	1,858.23	1,858.23	1,858.23	1,858.23	1,858.23	1,858.23	1,858.23	1,858.23	CHINA
KUVAIT	13,268.18	14,839.73	15,962.08	15,332.86	16,470.33	23,391.77	29,901.35	29,849.57	KUWAIT
NORVEGJI	2,500.00	2,500.00	2,500.00	10,894.87	26,106.74	25,968.59	23,498.21	21,751.49	NORWAY
SUEDI	4,125.00	4,125.00	4,125.00	4,125.00	4,125.00	4,125.00	4,125.00	4,125.00	SWEDEN
-Borxhi i riskeduluar (III) (A+B)	31,927.35	26,702.05	20,122.58	18,388.59	40,126.97	117,371.08	114,602.31	125,090.39	-Rescheduled Debt (III) (A+B)
-Klubi i Parisit (A)	31,927.35	26,702.05	20,122.58	18,388.59	17,425.03	55,053.83	52,285.05	49,670.67	-Paris Club (A)
AUSTRI	5,559.65	4,316.13	2,869.56	1,871.82	1,424.47	1,266.65	1,015.22	744.92	AUSTRIA
ANGLI	-	-	-	-	-	-	-	-	UNITED KINGDOM
DANIMARKE	-	-	-	-	-	-	-	-	DENMARK
FRANCE	13,356.97	10,262.86	7,597.65	5,461.87	4,165.32	3,216.14	2,084.94	1,549.07	FRANCE
GJERMANI	10,724.38	10,392.13	8,429.62	5,250.90	6,514.52	6,035.80	5,814.93	4,983.77	GERMANY
HOLLANDE	747.67	580.43	385.98	255.08	194.11	172.60	138.33	101.50	NETHERLANDS
ITALI	1,538.68	1,150.50	839.77	5,548.92	4,993.46	5,045.30	5,110.45	4,776.51	ITALY
JAPONI	-	-	-	-	133.15	110.48	81.74	59.17	JAPAN
RUSI	-	-	-	-	-	39,206.85	38,039.44	37,455.74	RUSSIA
-Te tjere (B)	-	-	-	-	22,701.95	62,317.25	62,317.26	75,419.72	-Others (B)
TURQI	-	-	-	-	22,701.95	22,701.95	22,701.95	22,701.95	TURKEY
KINE	-	-	-	-	-	39,615.31	39,615.31	37,964.67	CHINA
HUNGARI	-	-	-	-	-	-	-	14,178.95	HUNGARY
MAQEDONI	-	-	-	-	-	-	-	574.15	MACEDONIA
GJITHSEJ (I+II+III)	276,428.25	357,738.27	447,607.99	517,956.34	600,806.48	858,849.96	1,025,832.08	1,066,516.27	TOTAL (I+II+III)

*) Deri me 30.09.2004
 Ne kete tabelë nuk përfshihet kredia e FMN-se

*) As of September 30, 2004
 IMF credit is not included

TABELA IV.2 - TABLE IV.2

BORXHI I JASHEM I GARANTUAR I SHQIPERISE
BORXHI NETO SIPAS KREDITOREVE

EXTERNAL PUBLICLY GUARANTEED DEBT OF ALBANIA
DEBT OUTSTANDING DISBURSED BY CREDITORS

	(USD'000)								
Sipas kreditoreve	1997	1998	1999	2000	2001	2002	2003	2004	By Creditors
-Shumepalesh (I)	9,482.91	9,804.66	12,390.03	12,208.64	12,978.86	17,576.63	43,420.54	49,556.22	-Multilateral (I)
EBRD	9,482.91	8,822.91	7,524.50	7,576.17	8,756.76	13,618.71	23,435.54	24,557.02	EBRD
EIB	-	981.75	4,865.53	4,632.47	4,222.10	3,957.92	19,985.00	24,999.21	EIB
-Dypalesh (II)	61,545.92	92,909.78	90,085.13	86,810.64	89,821.52	103,166.37	131,132.40	136,013.50	-Bilateral (II)
GJERMANI	36,082.67	46,546.73	40,079.28	38,973.37	39,420.65	44,912.11	53,592.92	52,188.03	GERMANY
GREQI	-	10,626.24	9,151.92	8,192.47	7,783.71	9,228.47	11,094.94	10,854.58	

TABELA V - TABLE V

BORXHI I JASHEM* AFATGJATE I SHQIPERISE
BORXHI NETO SIPAS MONEDHAVE

LONG-TERM EXTERNAL DEBT* OF ALBANIA
DOD BY CURRENCY

(USD'000)

Monedha Currency	2004**	%
ACU	13,681.50	1.09
EUR	369,631.31	29.52
JPY	41,013.02	3.28
KWD	29,849.57	2.38
SDR	634,174.66	50.65
USD	163,749.71	13.08
TOTAL	1,252,099.76	100.00

*) Përfshin borxhin e jashtëm shtetëror dhe shtetëror të garantuar

**) Deri më 30.09.2004

Nuk përfshihet kredia e FMN-se

*) Includes external public and external publicly guaranteed debt

**) As of September 30, 2004

IMF credit is not included

TABELA VI - TABLE VI

BORXHI I JASHTEM* AFATGJATE I SHQIPERISE
PJESA E PATERHEQUR E KREDIVE

LONG-TERM EXTERNAL DEBT* OF ALBANIA
COMMITTED UNDISBURSED BALANCE

(USD'000)									
Sipas kreditoreve	1997	1998	1999	2000	2001	2002	2003	2004**	By Creditors
-Shumepalesh (I)	197,469.70	268,885.71	288,957.60	242,043.81	227,971.04	307,260.11	315,790.76	338,248.70	-Multilateral (I)
CEB	-	-	-	-	-	3,400.00	2,550.00	2,646.00	CEB
EBRD	23,305.81	24,481.25	20,706.87	26,077.88	31,545.95	29,270.09	57,423.91	45,961.17	EBRD
EIB	24,353.23	78,197.00	53,314.55	20,491.39	9,457.01	67,449.58	64,708.71	103,992.59	EIB
IDA	111,079.63	125,940.71	177,181.93	158,926.74	141,429.01	165,095.29	157,142.79	139,481.66	IDA
IDB	15,721.23	15,854.87	20,513.03	17,986.47	20,066.34	23,855.07	21,895.47	38,378.11	IDB
IFAD	14,286.51	12,546.25	7,356.57	5,617.77	14,947.86	11,995.76	6,509.63	4,658.76	IFAD
OPEC	8,723.29	11,865.63	9,884.66	12,943.56	10,524.86	6,194.32	5,560.25	3,130.41	OPEC
-Dypalesh (II)	76,410.65	79,145.61	72,299.56	121,290.46	129,161.47	161,877.00	171,008.84	205,928.38	-Bilateral (II)
AUSTRI	-	-	-	-	-	-	-	-	AUSTRIA
GJERMANI	20,082.63	16,383.48	11,563.77	10,308.75	35,707.18	42,621.88	53,721.09	49,458.05	GERMANY
GREQI	-	-	13,575.35	10,693.90	21,835.91	25,888.93	31,125.00	30,450.72	GREECE
ITALI	14,182.45	18,859.10	8,630.60	43,979.03	37,473.30	52,465.07	56,778.44	103,968.82	ITALY
JAPONI	36,941.03	40,796.54	37,390.24	31,664.32	27,718.34	30,666.30	28,073.94	21,503.81	JAPAN
KINE	141.78	141.78	141.78	141.78	141.78	141.78	-	-	CHINA
KUVAIT	5,062.76	2,964.72	997.81	8,332.57	5,326.72	10,093.04	1,310.37	546.99	KUWAIT
NORVEGJI	-	-	-	16,170.13	958.26	-	-	-	NORWAY
SUEDI	-	-	-	-	-	-	-	-	SWEDEN
GJITHSEJ (I+II)	273,880.35	348,031.32	361,257.16	363,334.27	357,132.51	469,137.11	486,799.61	544,177.08	TOTAL (I+II)

*) Perfshin borxhin shtetëror dhe shtetëror të garantuar

**) Deri më 30.09.2004

Ne këtë tabelë nuk përshihet kredia e FMN-se

*) Includes external public and external publicly guaranteed debt

**) As of September 30, 2004

IMF credit is not included

TABELA VI.1 - TABLE VI.1

BORXHI I JASHTEM SHTETEROR I SHQIPERISE
PJESA E PATERHEQUR E KREDIVE

EXTERNAL PUBLIC DEBT OF ALBANIA
COMMITTED UNDISBURSED BALANCE

(USD'000)									
Sipas kreditoreve	1997	1998	1999	2000	2001	2002	2003	2004*	By Creditors
-Shumepalesh (I)	149,810.65	219,933.23	250,815.58	215,642.52	204,958.44	256,661.26	253,554.86	287,766.50	-Multilateral (I)
CEB	-	-	-	-	-	3,400.00	2,550.00	2,646.00	CEB
EBRD	-	-	-	-	8,841.00	10,482.00	17,049.92	10,702.79	EBRD
EIB	-	53,725.77	35,879.40	20,167.98	9,149.37	35,638.82	42,846.79	88,768.78	EIB
IDA	111,079.63	125,940.71	177,181.93	158,926.74	141,429.01	165,095.29	157,142.79	139,481.66	IDA
IDB	15,721.23	15,854.87	20,513.03	17,986.47	20,066.34	23,855.07	21,895.47	38,378.11	IDB
IFAD	14,286.51	12,546.25	7,356.57	5,617.77	14,947.86	11,995.76	6,509.63	4,658.76	IFAD
OPEC	8,723.29	11,865.63	9,884.66	12,943.56	10,524.86	6,194.32	5,560.25	3,130.41	OPEC
-Dypalesh (II)	8,744.05	21,826.22	24,035.91	42,655.13	64,783.09	100,622.84	108,832.28	154,799.87	-Bilateral (II)
AUSTRI	-	-	-	-	-	-	-	-	AUSTRIA
GJERMANI	26.73	3,523.67	2,004.06	3,378.31	31,461.44	39,352.78	50,010.23	46,966.67	GERMANY
GREQI	-	-	13,575.35	10,693.90	21,835.91	25,888.93	31,125.00	30,450.72	GREECE
ITALI	3,512.79	15,196.06	7,316.91	3,938.44	5,059.00	25,146.31	26,386.68	76,835.48	ITALY
JAPONI	-	-	-	-	-	-	-	-	JAPAN
KINE	141.78	141.78	141.78	141.78	141.78	141.78	-	-	CHINA
KUVAIT	5,062.76	2,964.72	997.81	8,332.57	5,326.72	10,093.04	1,310.37	546.99	KUWAIT
NORVEGJI	-	-	-	16,170.13	958.26	-	-	-	NORWAY
SUEDI	-	-	-	-	-	-	-	-	SWEDEN
GJITHSEJ (I+II)	158,554.70	241,759.45	274,851.49	258,297.64	269,741.53	357,284.10	362,387.14	442,566.36	TOTAL (I+II)

*) Deri me 30.09.2004

Ne kete tabelë nuk përfshihet kredia e FMN-se

*) As of September 30, 2004

IMF credit is not included

TABELA VI.2 - TABLE VI.2

BORXHI I JASHTEM I GARANTUAR I SHQIPERISE
PJESA E PATERHEQUR E KREDIVE

EXTERNAL PUBLICLY GUARANTEED DEBT OF ALBANIA
COMMITTED UNDISBURSED BALANCE

(USD'000)									
Sipas kreditoreve	1997	1998	1999	2000	2001	2002	2003	2004*	By Creditors
-Shumepalesh (I)	47,659.04	48,952.48	38,142.02	26,401.29	23,012.60	50,598.85	62,235.91	50,482.20	-Multilateral (I)
EBRD	23,305.81	24,481.25	20,706.87	26,077.88	22,704.95	18,788.09	40,373.99	35,258.39	EBRD
EIB	24,353.23	24,471.23	17,435.15	323.41	307.65	31,810.76	21,861.92	15,223.82	EIB
-Dypalesh (II)	67,666.59	57,319.39	48,263.64	78,635.34	64,378.38	61,254.16	62,176.57	51,128.52	-Bilateral (II)
GJERMANI	20,055.90	12,859.81	9,559.71	6,930.44	4,245.74	3,269.10	3,710.86	2,491.38	GERMANY
GREQI	-	-	-	-	-	-	-	-	GREECE
ITALI	10,669.66	3,663.04	1,313.69	40,040.59	32,414.30	27,318.75	30,391.77	27,133.33	ITALY
JAPONI	36,941.03	40,796.54	37,390.24	31,664.32	27,718.34	30,666.30	28,073.94	21,503.81	JAPAN
GJITHSEJ (I+II)	115,325.64	106,271.86	86,405.66	105,036.63	87,390.98	111,853.00	124,412.47	101,610.72	TOTAL (I+II)

*) Deri me 30.09.2004

*) As of September 30, 2004