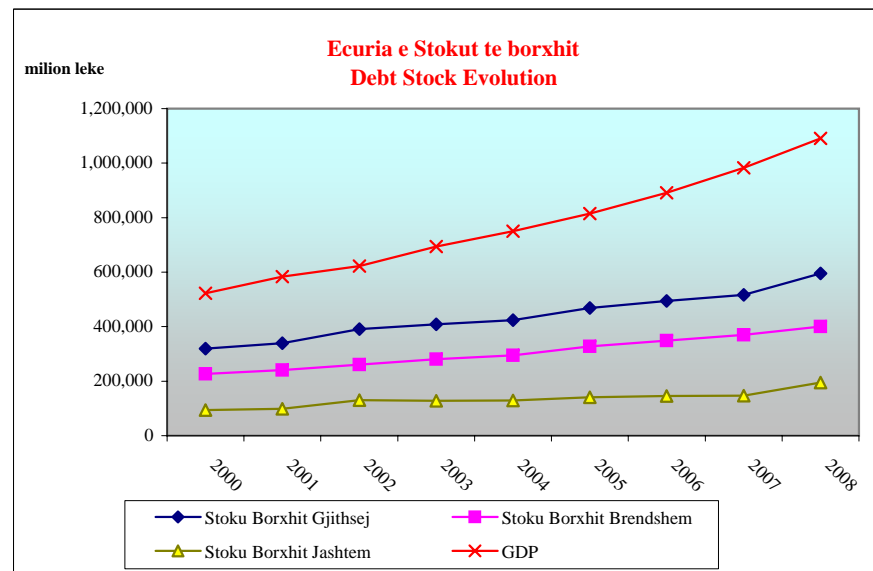
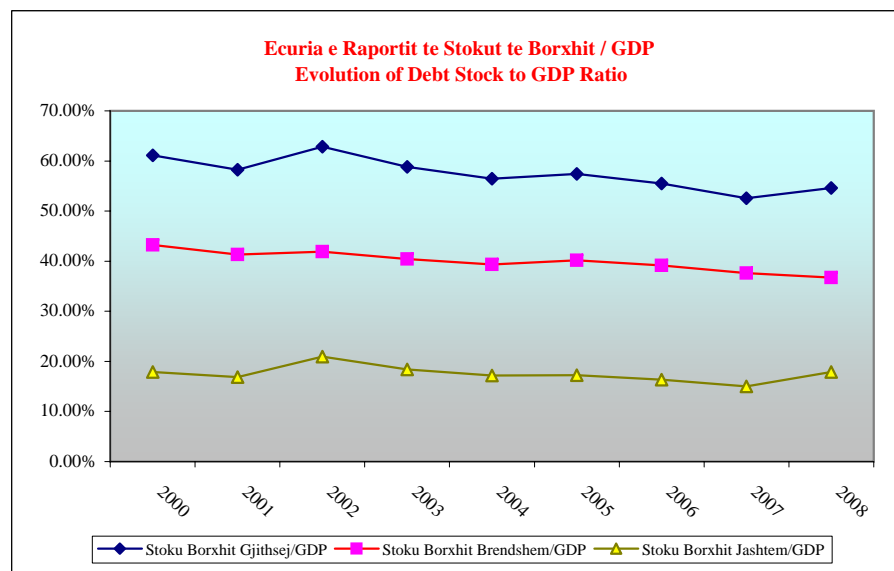


Stoku i Borxhit Gjithsej Total Debt Stock

ne milion leke

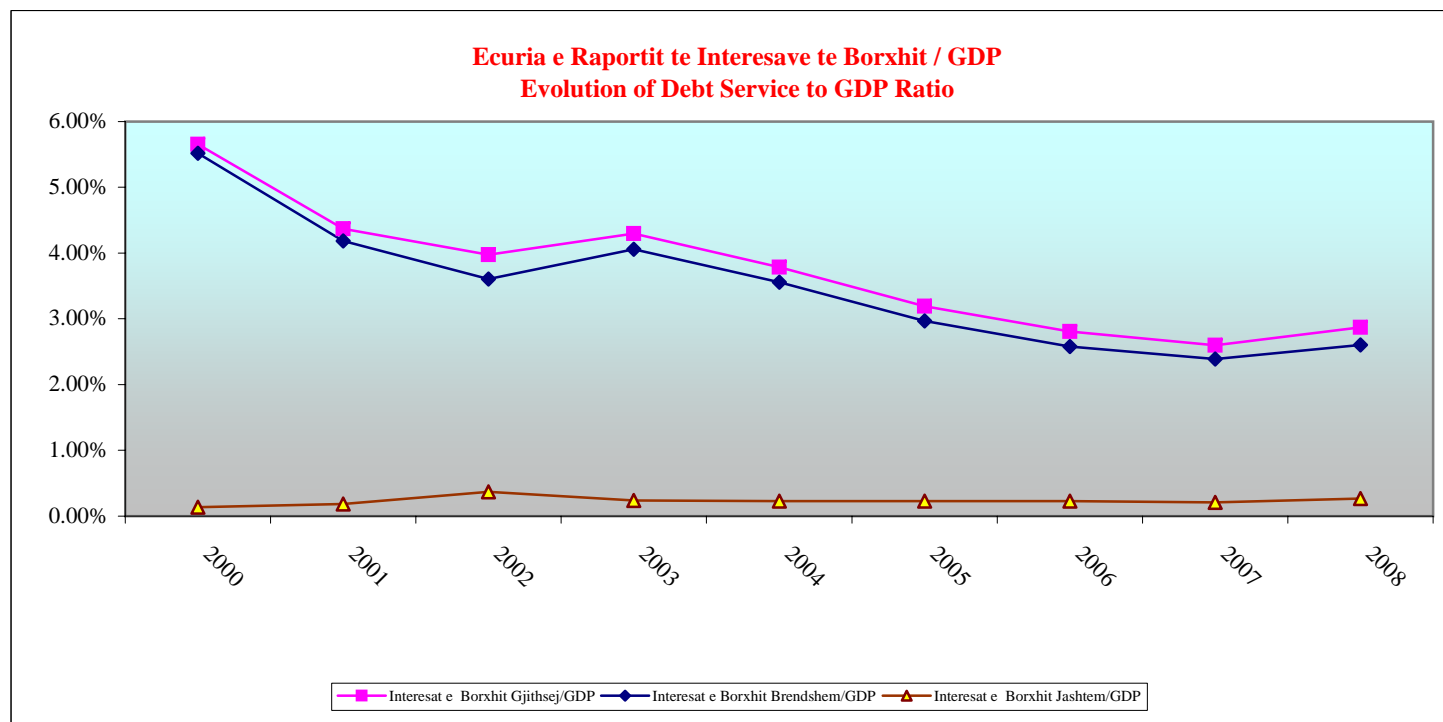
	2000	2001	2002	2003	2004	2005	2006	2007	2008	
Stoku Borxhit Gjithsej	319,608	339,640	391,314	408,290	423,965	468,087	494,584	516,860	595,724	Total Debt Stock
Stoku Borxhit Brendshem	226,069	241,161	260,752	280,767	295,200	327,353	348,935	369,536	400,456	Domestic Debt Stock
Stoku Borxhit Jashtem	93,539	98,479	130,562	127,523	128,765	140,734	145,649	147,324	195,268	External Debt Stock
GDP	523,043	583,369	622,711	694,098	750,785	814,797	891,000	982,737	1,090,300	GDP
Stoku Borxhit Gjithsej/GDP	61.11%	58.22%	62.84%	58.82%	56.47%	57.45%	55.51%	52.59%	54.64%	Total Debt Stock/GDP
Stoku Borxhit Brendshem/GDP	43.22%	41.34%	41.87%	40.45%	39.32%	40.18%	39.16%	37.60%	36.73%	Domestic Debt Stock/GDP
Stoku Borxhit Jashtem/GDP	17.88%	16.88%	20.97%	18.37%	17.15%	17.27%	16.35%	14.99%	17.91%	External Debt Stock/GDP



Interesat e Borxhit Gjithsej Total Debt Service

ne milion leke

	2000	2001	2002	2003	2004	2005	2006	2007	2008	
Interesat e Borxhit Gjithsej	29,572	25,505	24,761	29,823	28,422	26,029	25,007	25,538	31,307	Total Debt Service
Interesat e B.Brendshem	28,869	24,413	22,467	28,174	26,710	24,184	22,978	23,499	28,386	Domestic Debt Interests
Interesat e B.Jashtem	703	1,092	2,294	1,649	1,712	1,845	2,029	2,039	2,921	External Debt Interests
GDP	523,043	583,369	622,711	694,098	750,785	814,797	891,000	982,737	1,090,300	GDP
Interesat e Borxhit Gjithsej/GDP	5.65%	4.37%	3.98%	4.30%	3.79%	3.19%	2.81%	2.60%	2.87%	Total Debt Service/GDP
Interesat e Borxhit Brendshem/GDP	5.52%	4.18%	3.61%	4.06%	3.56%	2.97%	2.58%	2.39%	2.60%	Total Debt Stock
Interesat e Borxhit Jashtem/GDP	0.13%	0.19%	0.37%	0.24%	0.23%	0.23%	0.23%	0.21%	0.27%	Total Debt Stock/GDP

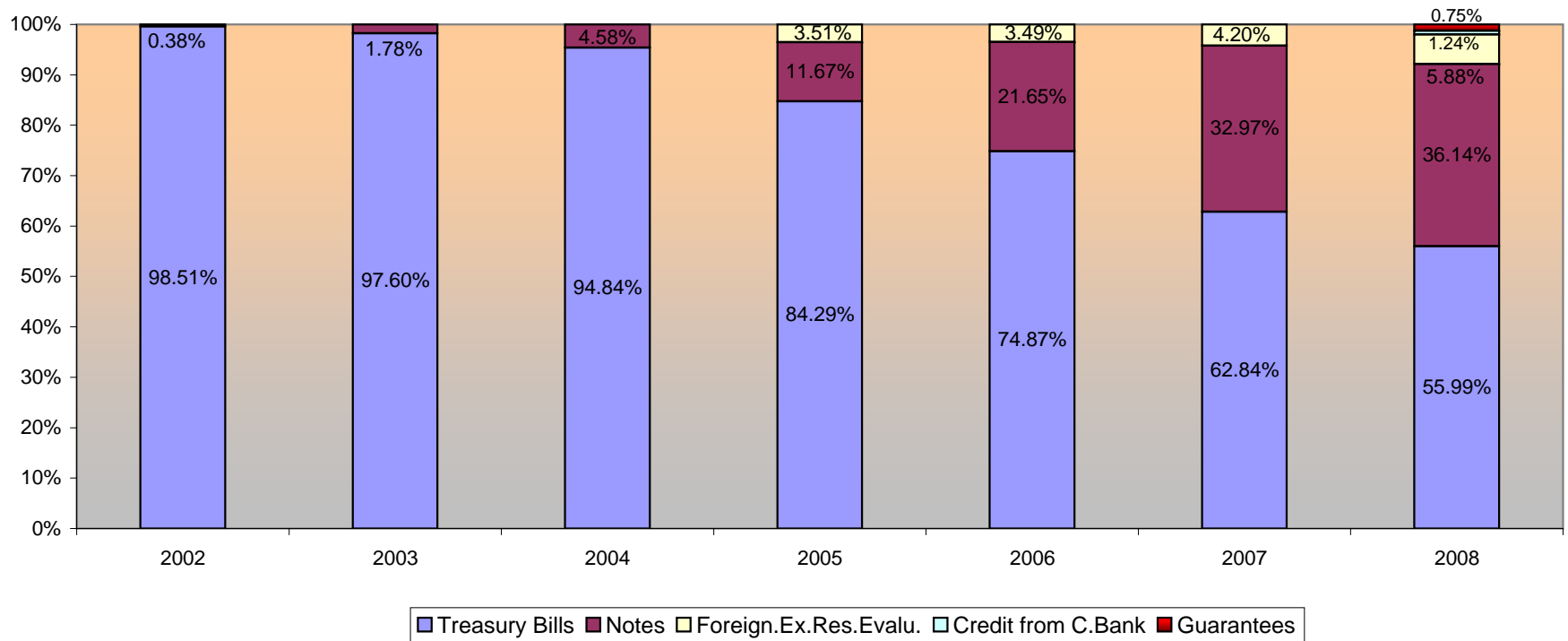


Stoku i Borxhit te Brendshem sipas Instrumentave
Domestic Debt Stock by Instruments

ne milion leke

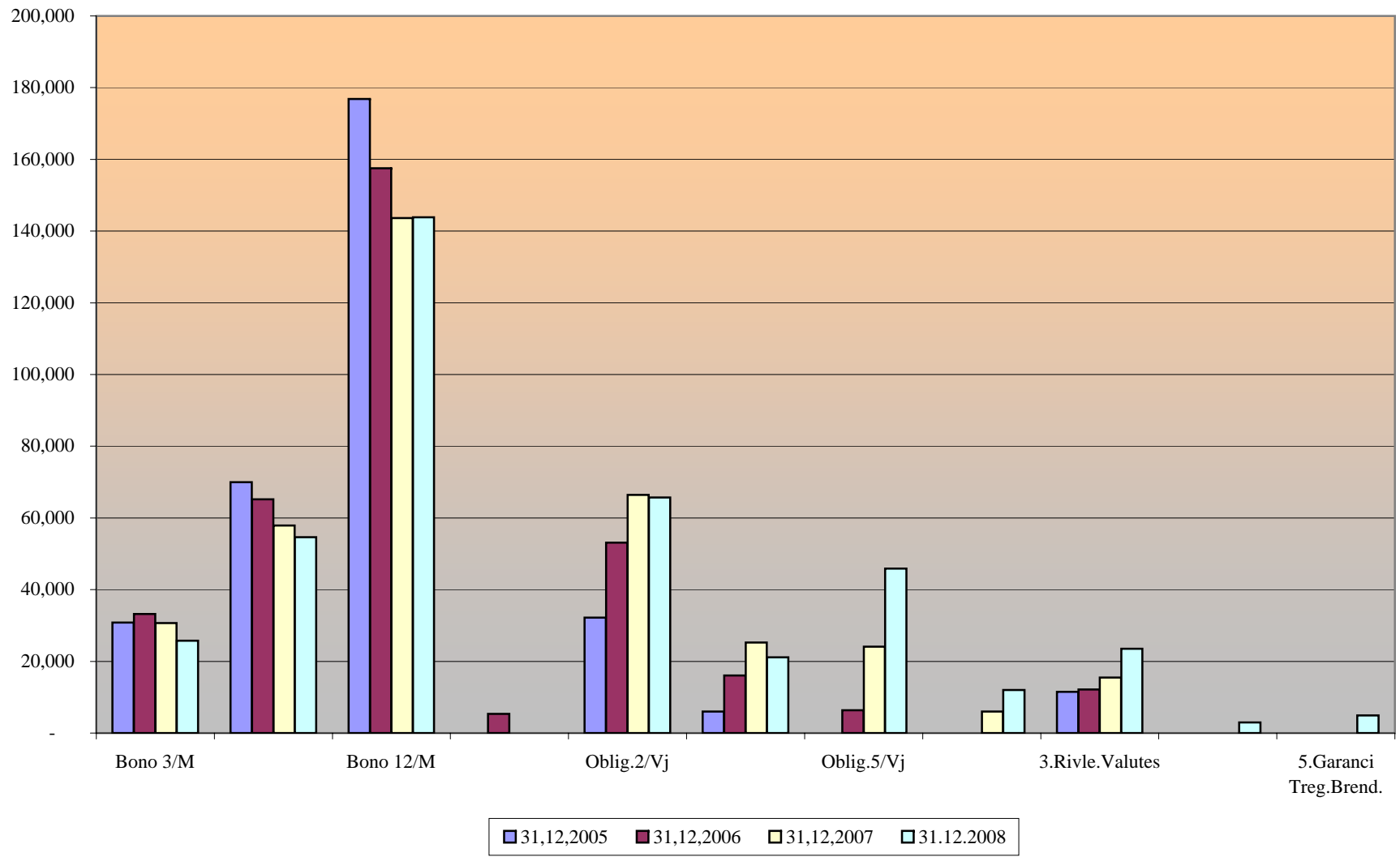
	31,12,2005		31,12,2006		31,12,2007		31,12,2008		
	Purchase value	%	Purchase value	%	Purchase value	%	Purchase value	%	
Stoku i Borxhit Gjithsej	327,353		348,935		369,536		400,456		Total Debt Stock
I.Borxhi Shteteror	327,353	100	348,935	100	369,536	100	395,504	98.76	I.Public Debt
1.Instrumenta afatshkurter	275,917	84.29	261,241	74.87	232,211	62.84	224,224	55.99	I.Short term Instruments
Bono 3/M	30,815	9.41	33,188	9.51	30,695	8.31	25,774	6.44	3 Month Bills
Bono 6/M	69,973	21.38	65,162	18.67	57,911	15.67	54,631	13.64	6 Month Bills
Bono 12/M	175,129	53.50	157,523	45.14	143,605	38.86	143,819	35.91	1 Year Bills
Bono 9/M	0	0.00	5,368	1.54	0	0.00	0	0.00	9 Month Bills
2.Instrumenta afatgjate	38,210	11.67	75,530	21.65	121,820	32.97	144,740	36.14	II. Long term Instruments
Oblig.2/Vj	32,210	9.84	53,120	15.22	66,460	17.98	65,730	16.41	2 Year Note
Oblig.3/Vj	6,000	1.83	16,050	4.60	25,250	6.83	21,100	5.27	3 Year Note
Oblig.5/Vj	0	0.00	6,360	1.82	24,110	6.52	45,910	11.46	5 Year Note
Oblig.7/Vj	0	0.00	0	0.00	6,000	1.62	12,000	3.00	7 Year Note
3. Kredi Direkte	0	0.00	0	0.00	0	0.00	3,000	0.75	Central Bank Credits
4.Rivleresimi Valutes	11,500	3.51	12,164	3.49	15,505	4.20	23,540	5.88	Forgn.Ex.Res.Evalu.
5. Rikapitalizim BKT	1,726	0.53	0		0		0		Bond for NBC capitalization
II.Borxhi i Garantuar	0	0	0	0	0	0	4,952	1.24	II.Publicly Guaranteed Debt
1. Garanci Treg.Brend.	0	0.00	0	0.00	0	0.00	4,952	1.24	Guarantees

Stoku i Borxhit te Brendshem sipas instrumentave
Domestic Debt Stock by Instruments

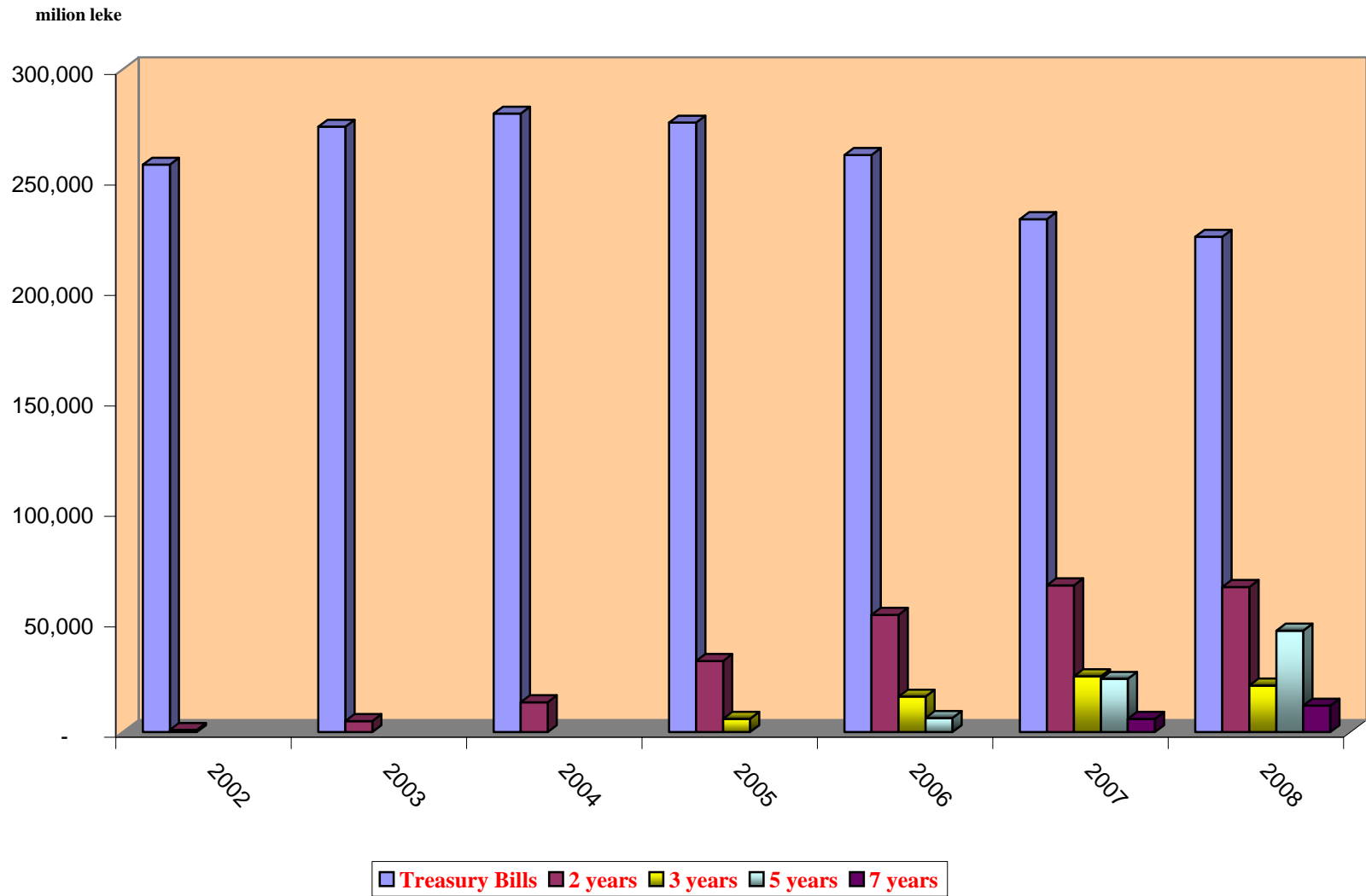


Ecuria e Instrumentave te Borxhit te Brendshem
Evolution of Domestic Debt Instruments

million leke



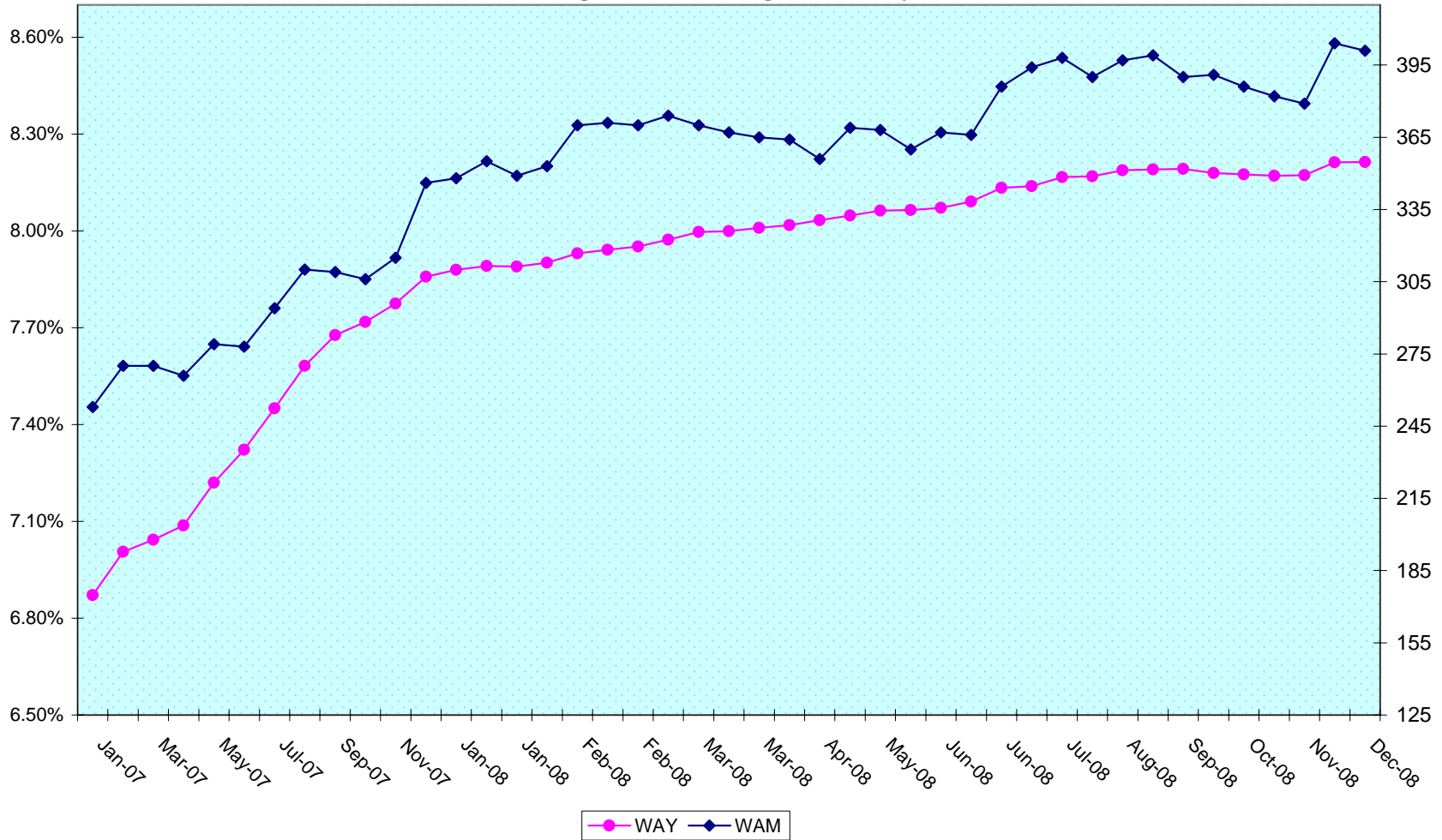
Evolution of Government Securities 2002-2008



Letrat me Vlere te Qeverise
Yield Mesatar & Dite Mesatare ne Maturim
Albanian Government Securities
Weighted Yield & Weighted Maturity

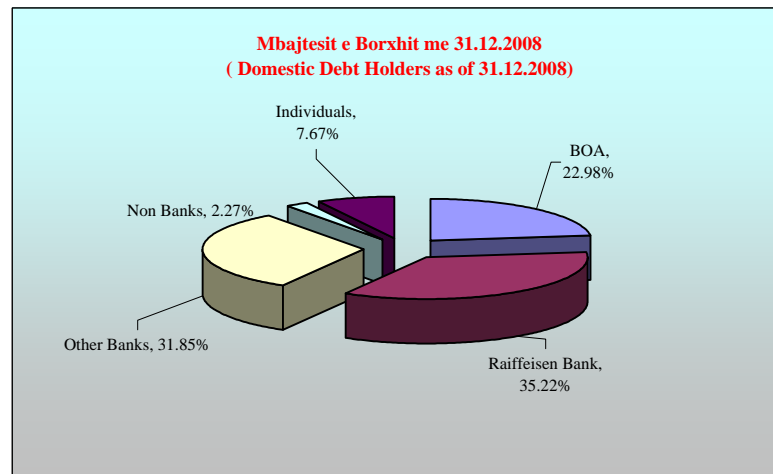
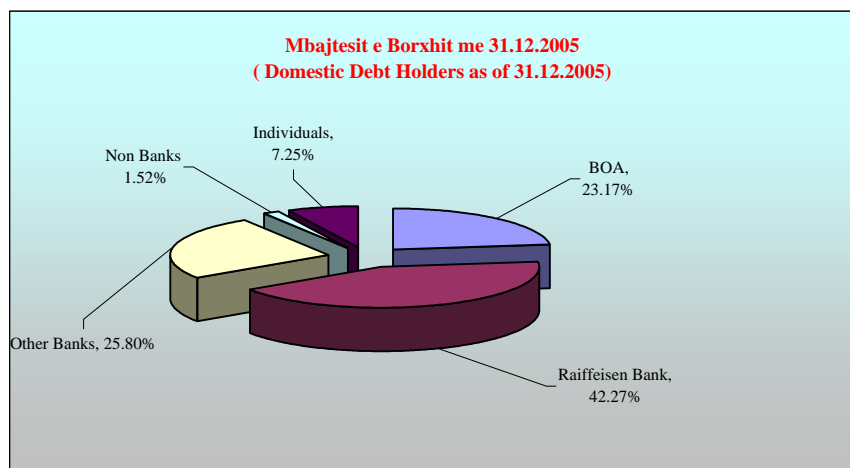
Yield

Days



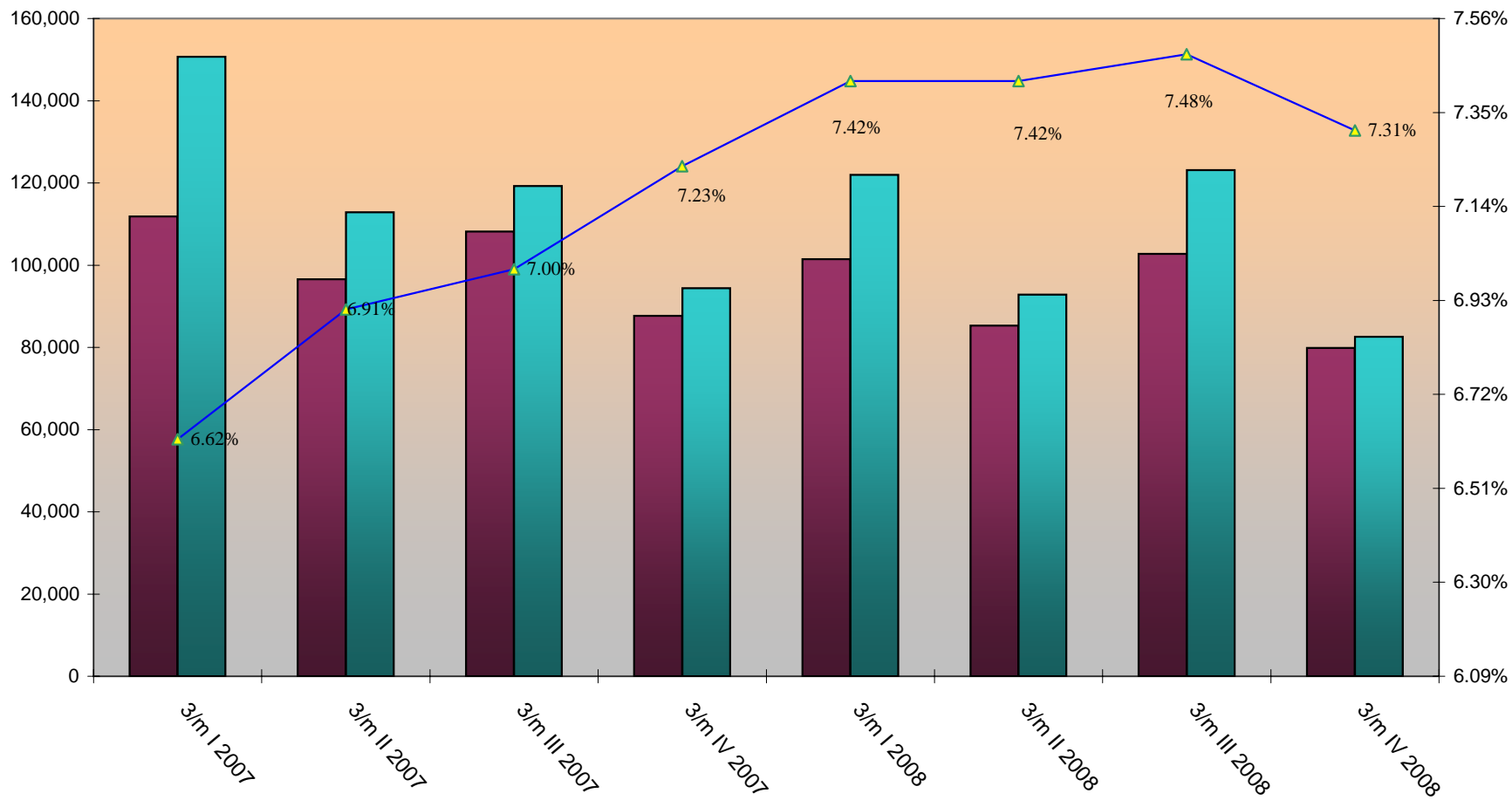
Mbajtesit e Borxhit te Brendshem ne Çmim Blerje
Domestic Debt Holders in Purchase Value

	31.12.2005	31.12.2006	31.12.2007	31.12.2008	
BOA	23.17%	22.41%	21.90%	22.98%	BOA
Raiffeisen Bank	42.27%	37.21%	33.69%	35.22%	Banka Raiffeisen
Other Banks	25.80%	31.76%	35.24%	31.85%	Bankat e tjera
Non Banks	1.52%	1.93%	1.84%	2.27%	Jo Banka
Individuals	7.25%	6.69%	7.34%	7.67%	Jo Konk+F.Pens BOA



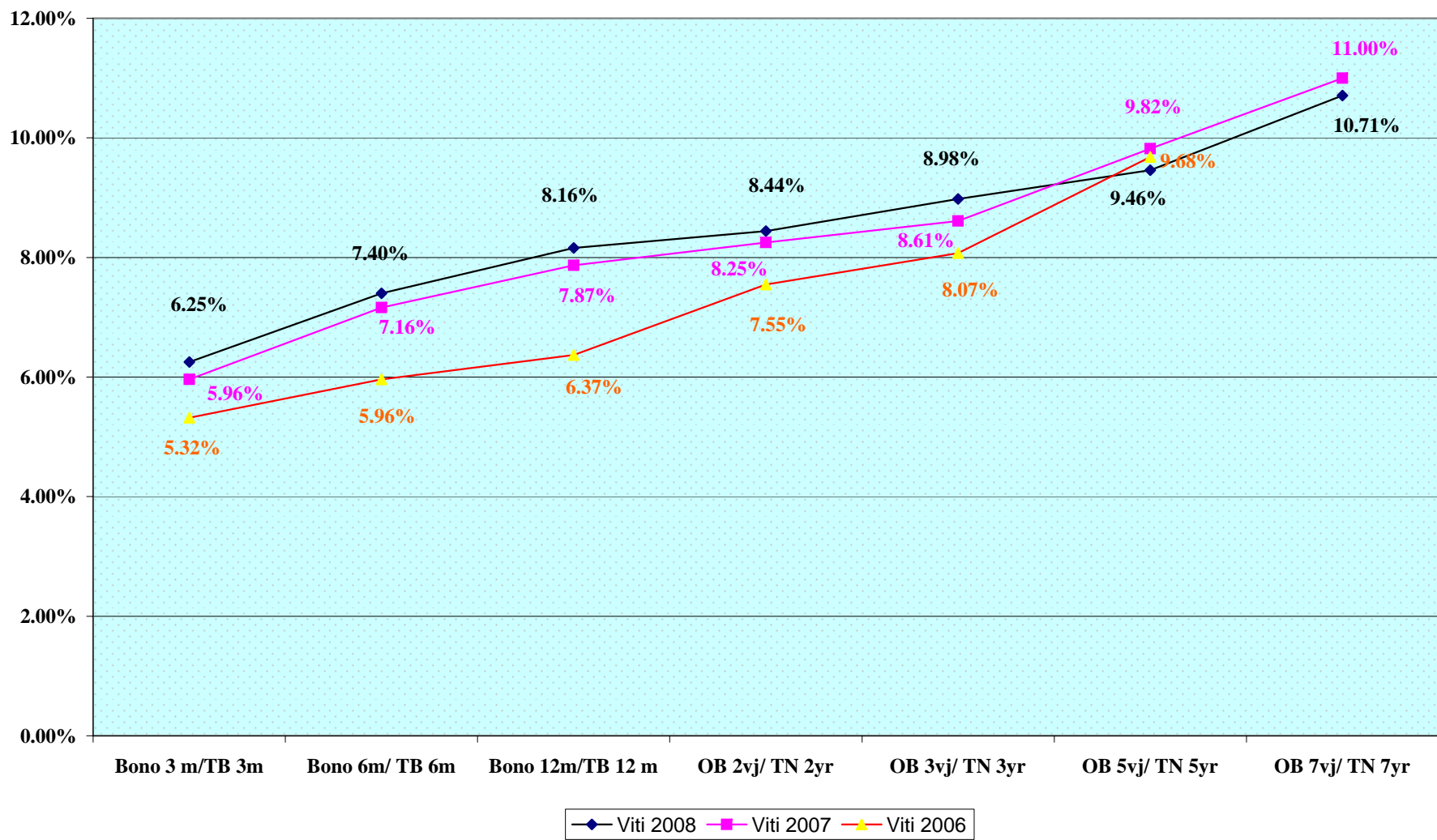
**Bono Thesari Emetuar, Kerkuar, Yield-i mesatar
TB, Issued,asked by particip.& Average Yield**

million leke



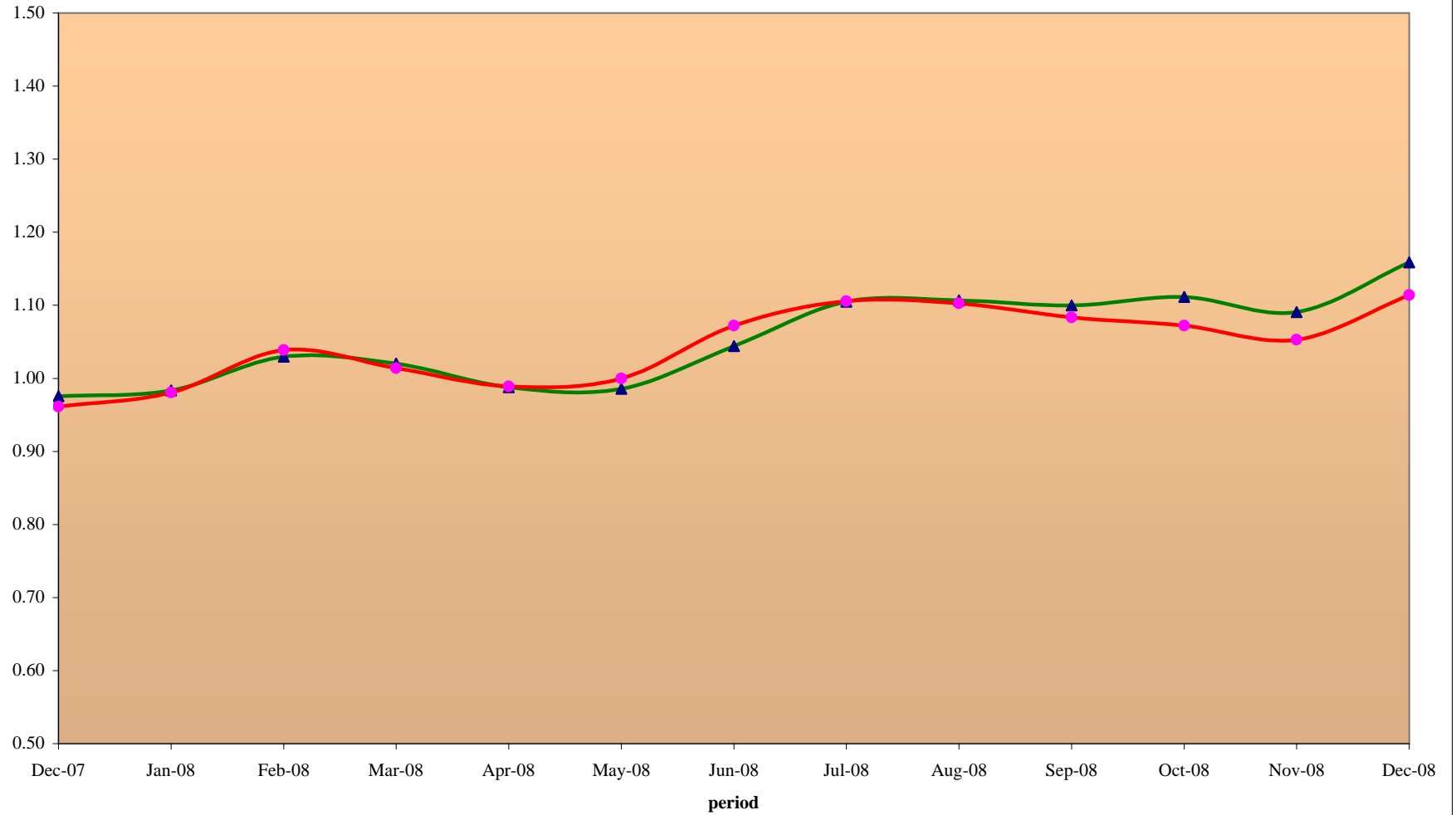
■ Emetuar/Issued ■ Kerkuar/Bidding ▲ Yield.Mes/Average Yield

Yield Curve Of Albanian Securities



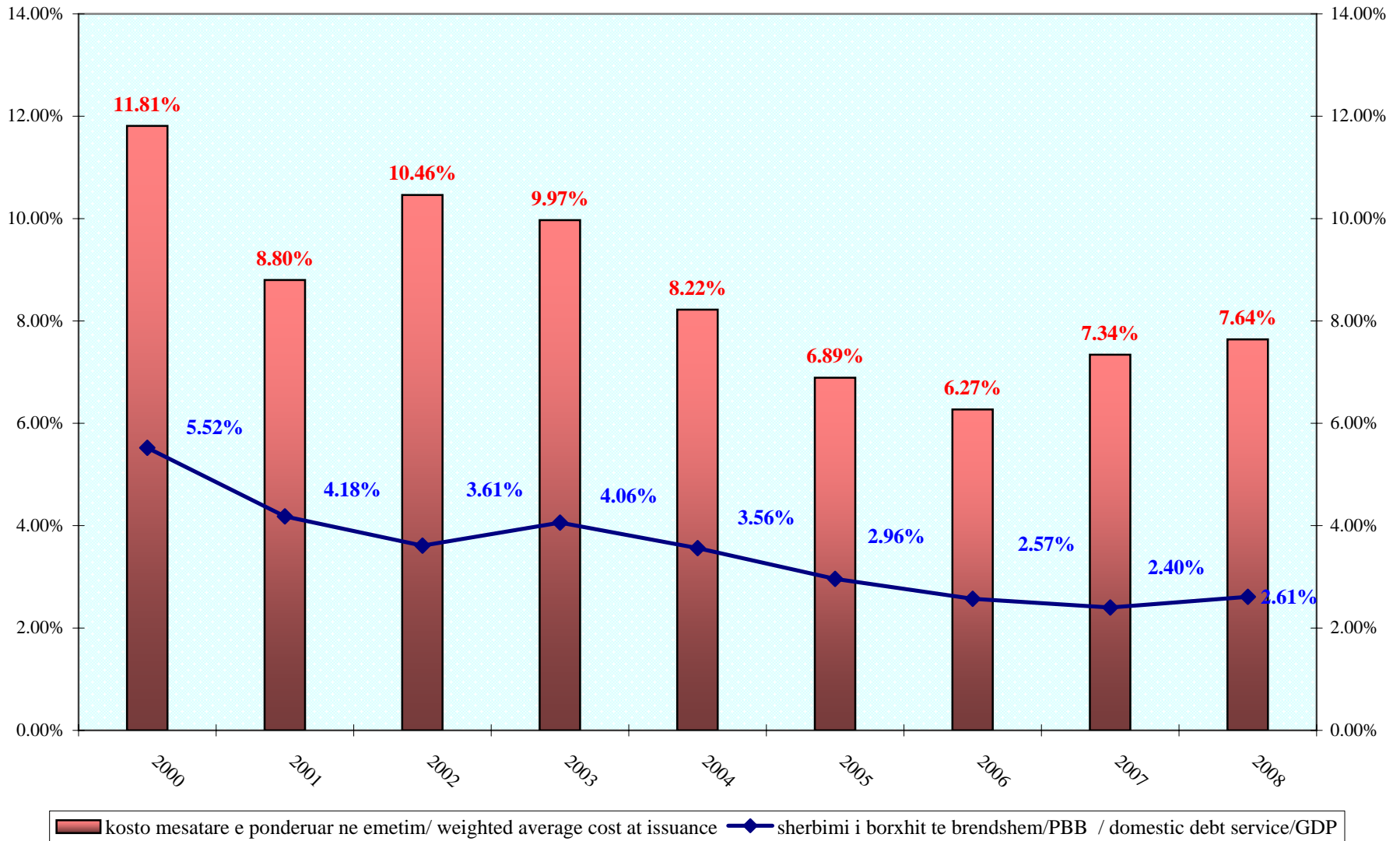
Duration dhe Ditet mesatare ne maturim te portfolit te letrave me vlere te Qeverise
Duration and Weighted Average Maturity of Government Securities

years

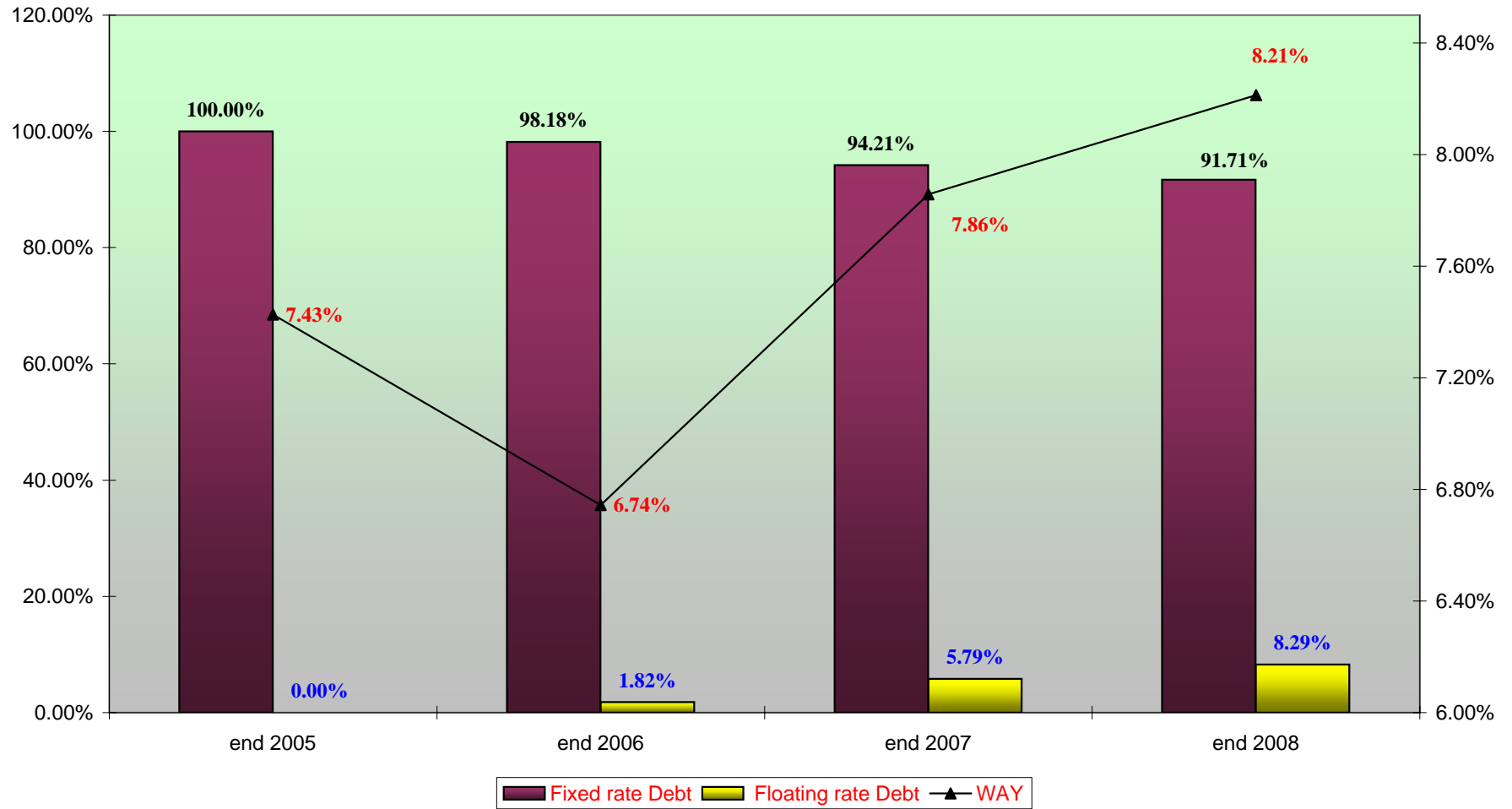


▲ Macaulay Duration ● WAM

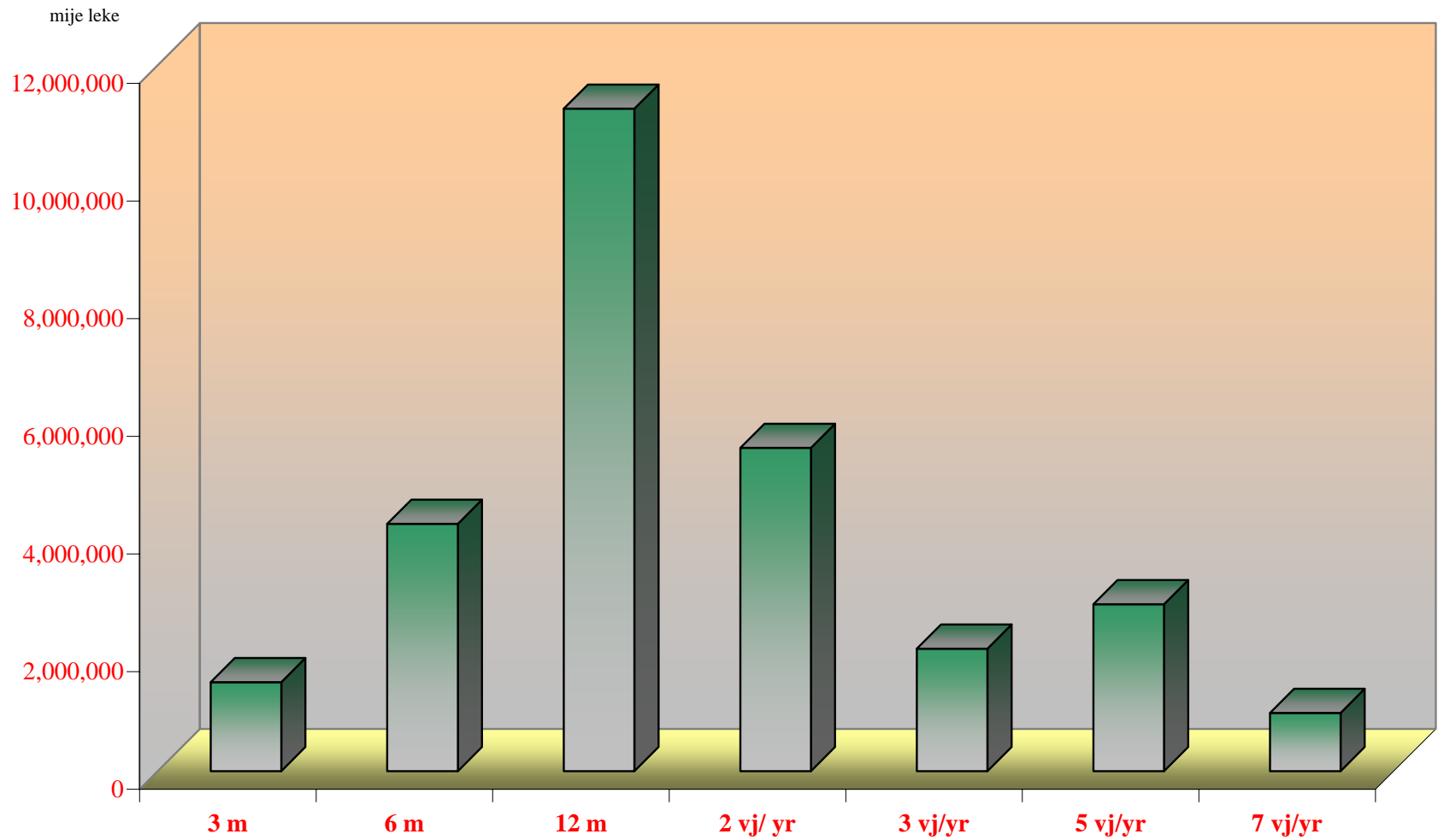
Sherbimi i Borxhit te Brendshem/GDP dhe Kosto Mesatare e Ponderuar ne Emetim
Domestic Debt Service/GDP & Weighted Average Cost at Issuance



Ecuria e struktures se Borxhit te Brendshem dhe Yield-i mesatar
Evolution of Debt Structure and Weighted Average Yield

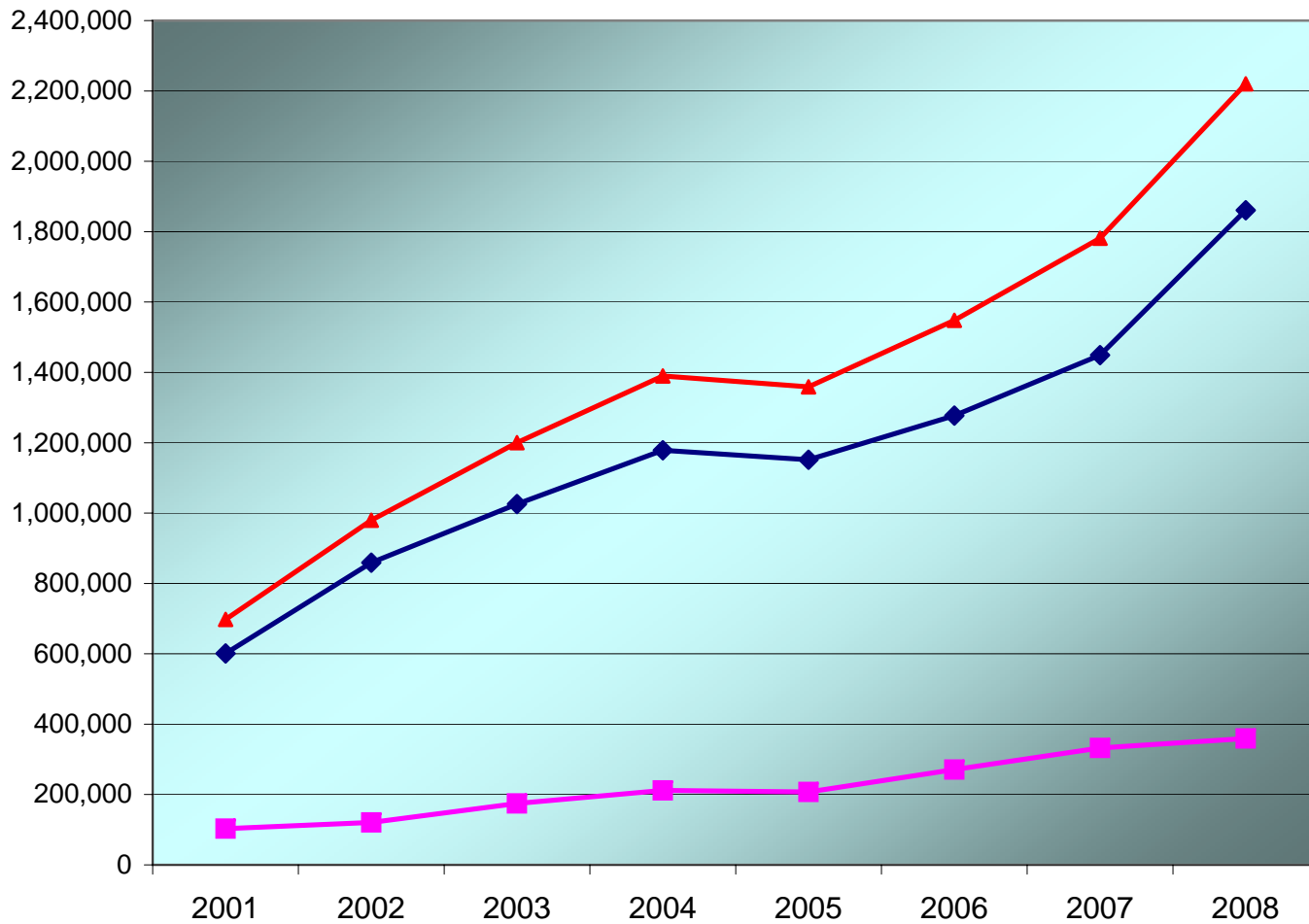


Shpenzimet per Interesa per Borxhin e Brendshem Viti 2008
Domestic Debt Service 2008



Paraqitja Grafike e Ecurise se Stokut te Borxhit te Jashtem
External Outstanding Debt

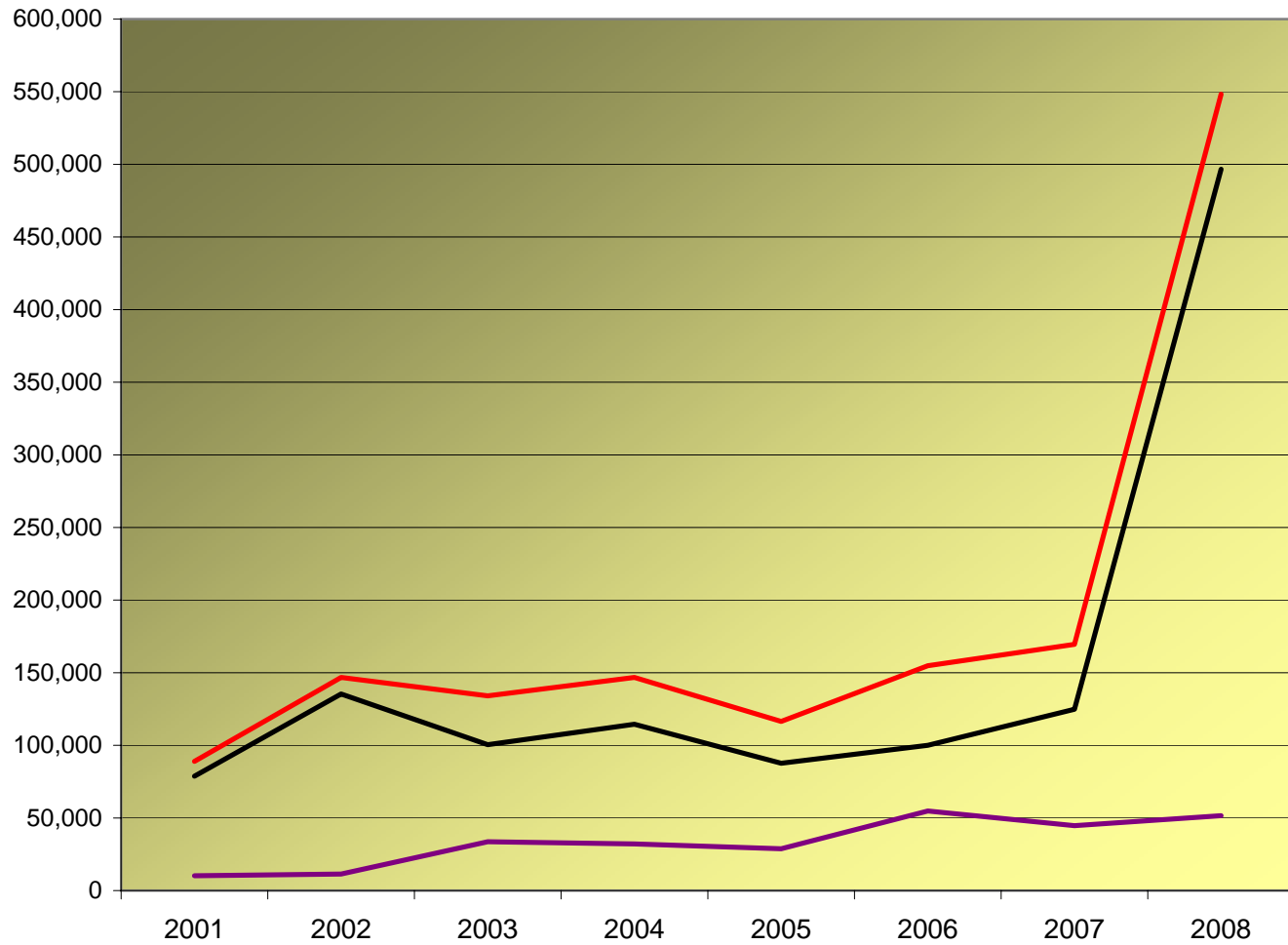
USD'000



◆ Stoku Shteteror Public Debt Outstanding ■ Stoku Garantuar Guaranteed Debt Outstanding ▲ Stoku Total Total Debt Outstanding

Ecuria e Disbursimeve te Borxhit te Jashtem
Disbursements of External Debt

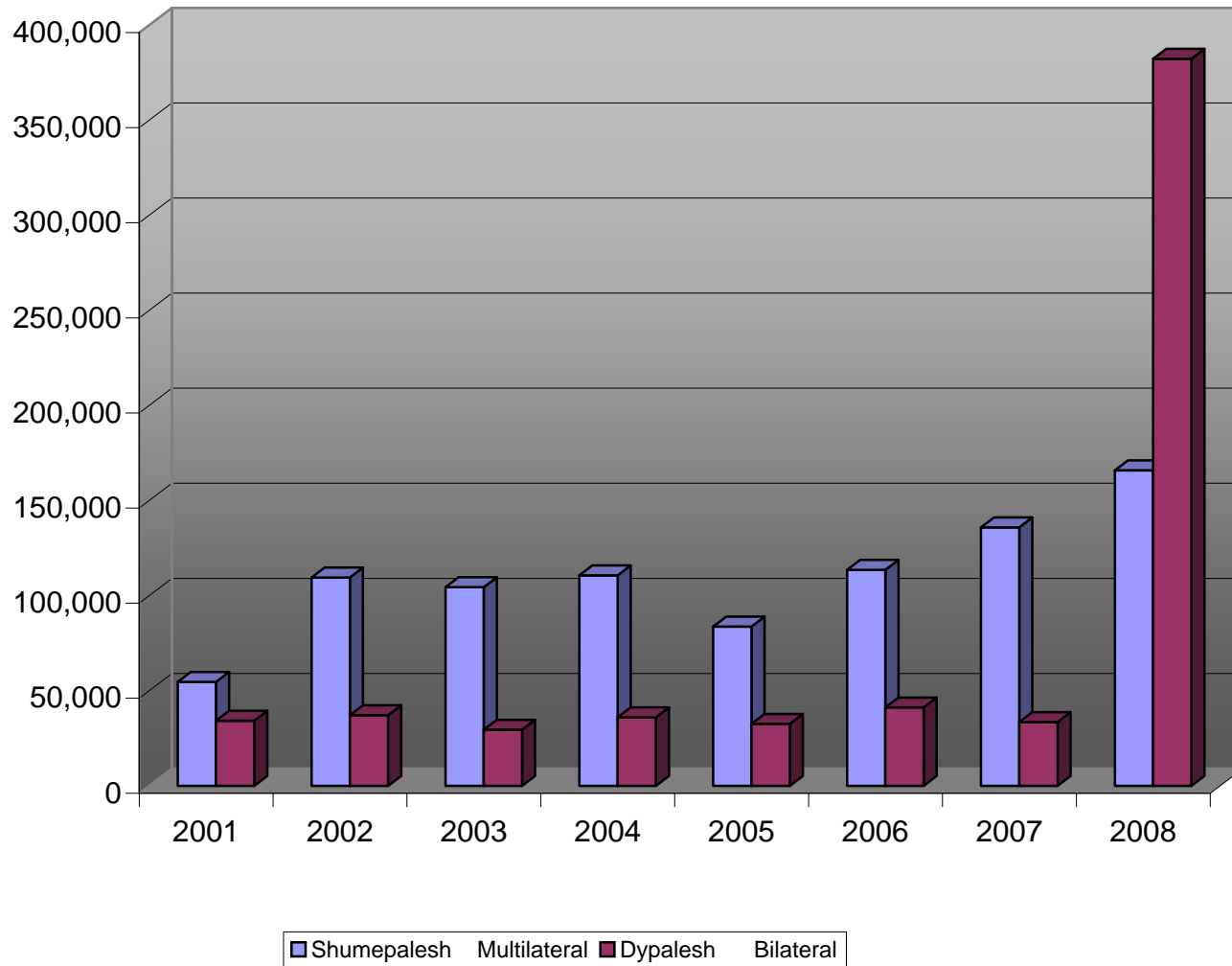
USD'000



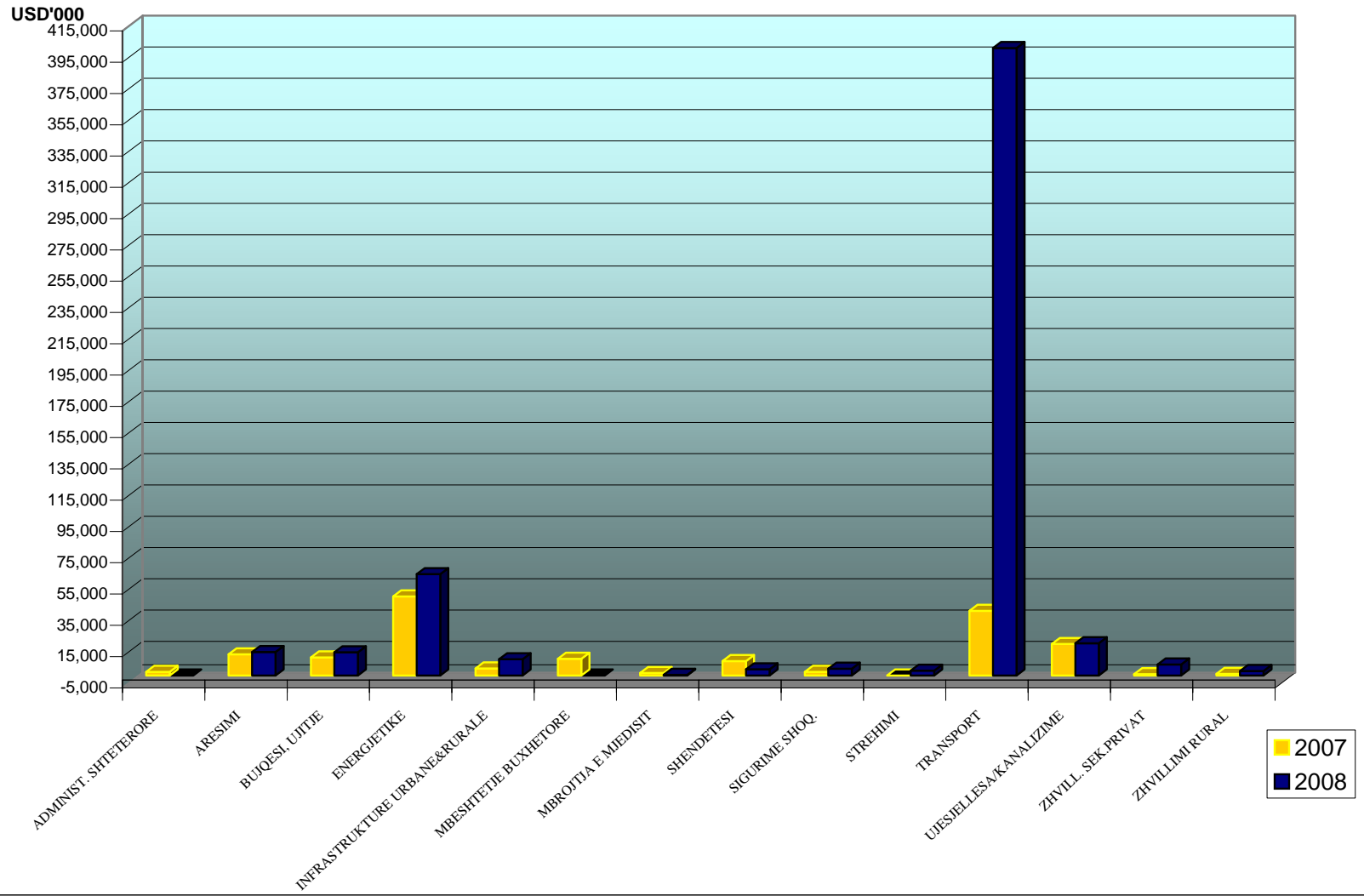
— Shteteror Public Debt — Garanci Guaranteed Debt — Disbursimet Totale Total Disbursement

Disbursimet e Borxhit te Jashtem sipas Llojit te Kreditoreve
Disbursements of External Debt by Creditor type

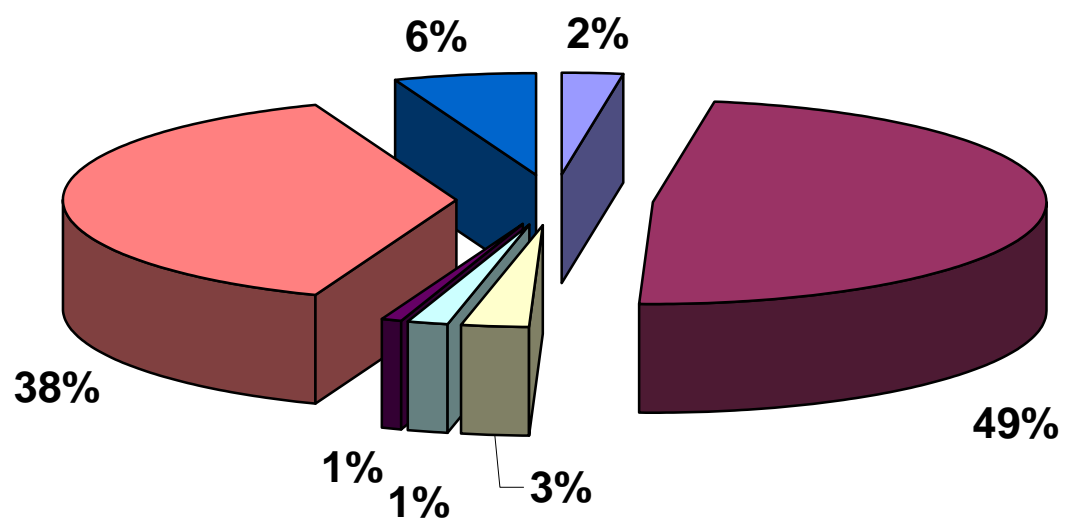
USD'000



Disbursimet sipas Sektoreve Ekonomike
Disbursements by Economic Sectors

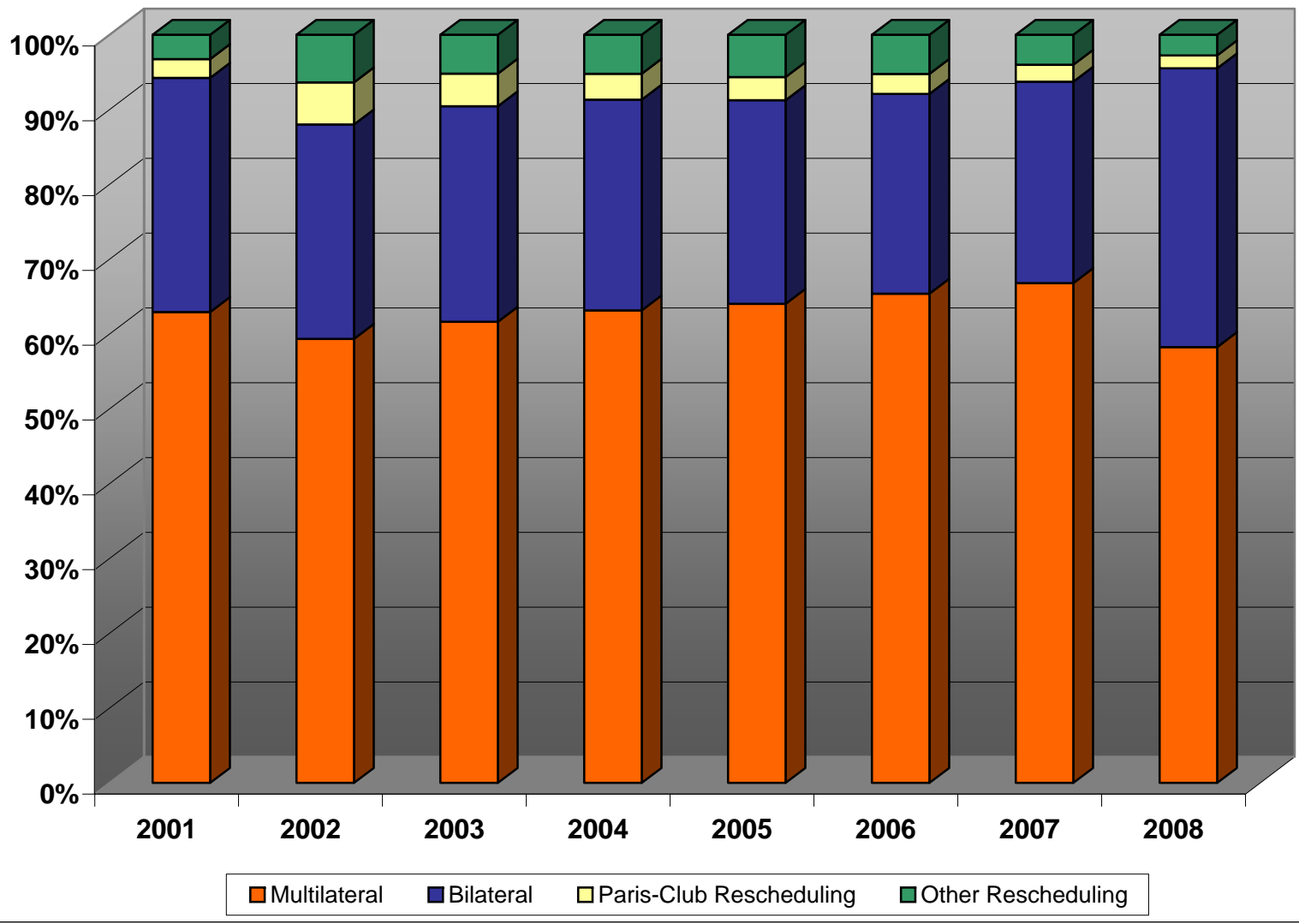


Stoku i Borxhit te Jashtem sipas Monedhave
Debt Outstanding by Currency (2008)



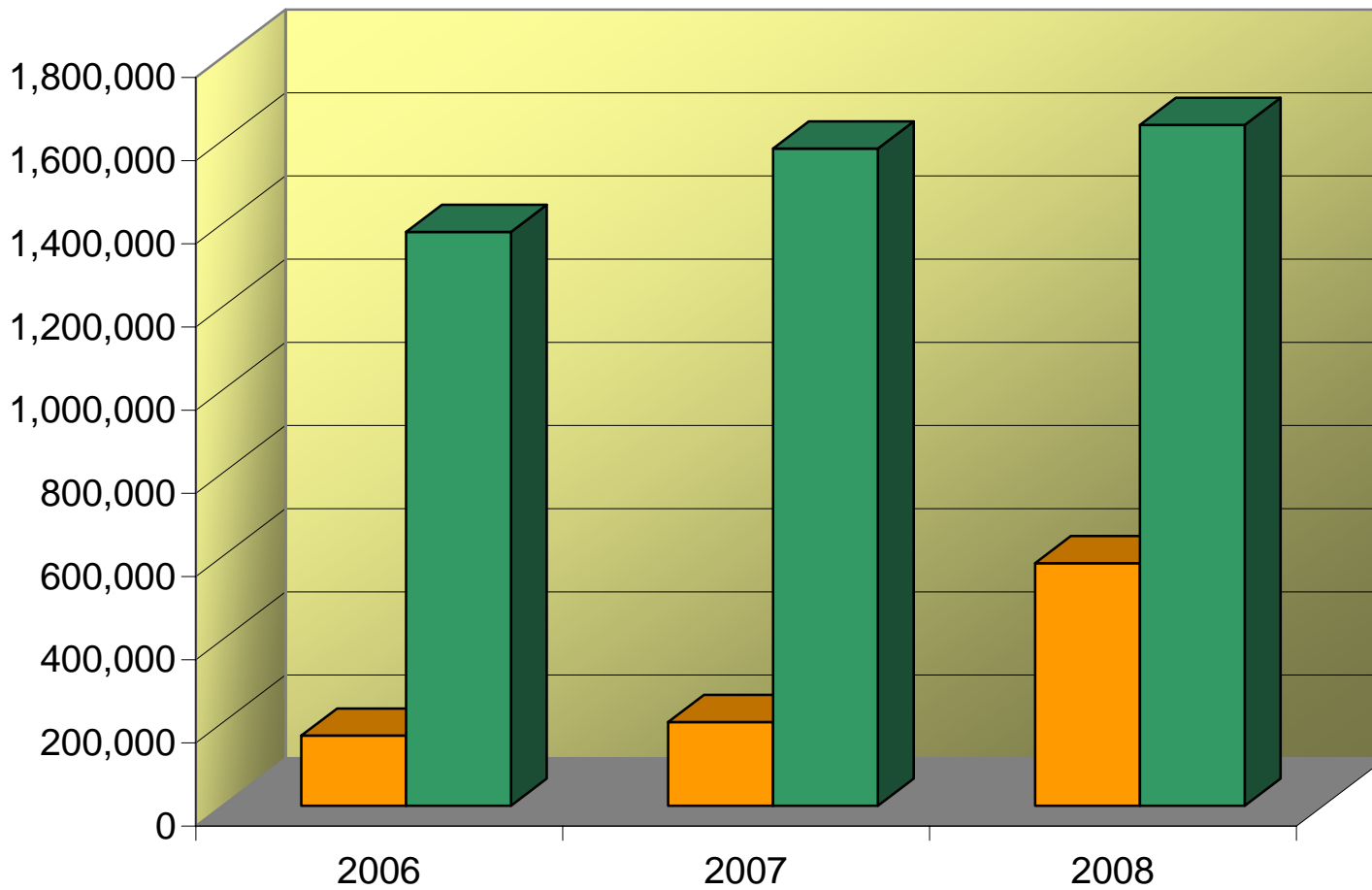
ACU EUR JPY KWD KRW SDR USD

Stoku i Borxhit te Jashtem sipas Llojit te Kredise
Debt Outstanding by Credit type



Stoku i Borxhit te Jashtem sipas Interesave
Debt Outstanding by Interest Rate

USD'000



Int. variabel Int. Fix

Stoku i Borxhit te Jashtem sipas Koncesionalitetit
Debt Outstanding by Concessionality

USD'000

1,400,000

1,200,000

1,000,000

800,000

600,000

400,000

200,000

0

2006

2007

2008

■ Concessional ■ Non-concessional

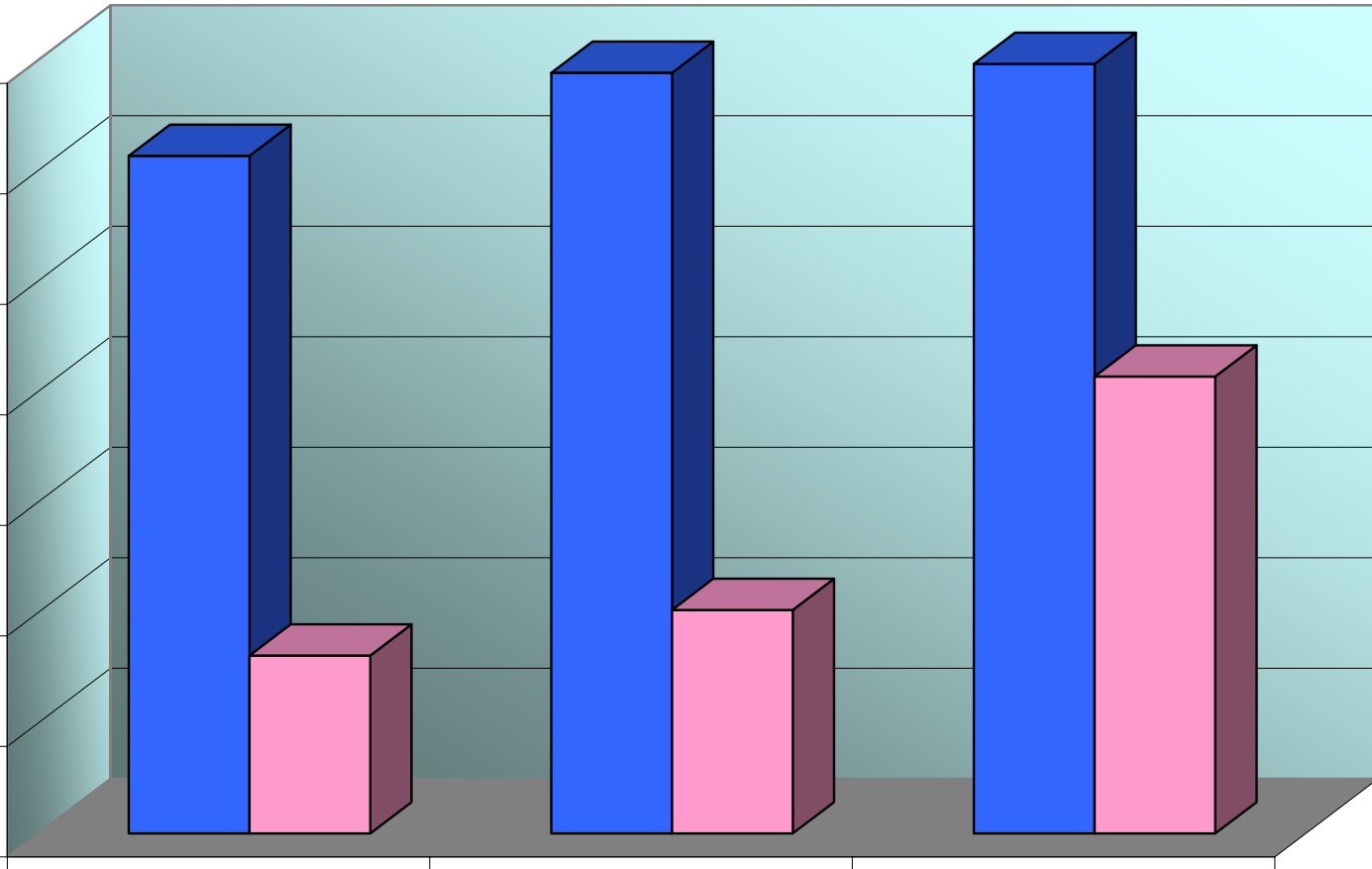


TABELA I - TABLE I

BORXHI I JASHEM* AFATGJATE I SHQIPERISE
TE DHENA PERMBLEDHESELONG-TERM EXTERNAL DEBT* OF ALBANIA
SUMMARIZED DATA

Klasifikimi	2000**	2001	2002	2003	2004	2005	2006	2007	2008	(USD'000)		Classification
										GJITHSEJ TOTAL		
I. TE DHENA KUMULATIVE												
Borxhi Neto	616,975.62	697,707.27	979,618.65	1,200,404.02	1,389,965.51	1,358,733.76	1,548,218.35	1,782,426.58	2,220,667.66	2,220,667.66		I. CUMULATIVE DATA (STOCK)
Terheqjet	866,596.78	955,555.95	1,102,351.03	1,236,396.89	1,383,104.99	1,499,538.62	1,654,368.43	1,825,105.34	2,373,466.29	2,373,466.29		Debt Outstanding Disbursed (DOD)
Pagesat e Borxhit	92,750.12	109,187.25	150,596.93	192,875.06	248,960.93	311,779.97	394,098.83	481,340.99	591,359.20	591,359.20		Drawings
-Principal	46,855.48	53,613.83	76,996.49	102,866.68	138,699.46	177,831.17	233,777.34	289,775.95	355,974.19	355,974.19		Debt Service
-Interes	45,894.64	55,573.42	73,600.44	90,008.38	110,261.47	133,948.80	160,321.50	191,565.05	235,385.02	235,385.02		-Principal
Borxhi i nenshkruar i paterhequr	363,334.27	357,132.51	469,137.10	486,799.61	680,203.84	655,561.96	774,599.53	1,097,298.99	1,150,781.13	1,150,781.13		-Interest
II. TE DHENA VJETORE												
Terheqjet	866,596.78	88,959.17	146,795.08	134,045.86	146,708.10	116,433.63	154,829.81	170,736.91	548,360.95	2,373,466.29		II. ANNUAL DATA (FLOWS)
Pagesat e Borxhit	92,750.12	16,437.13	41,409.68	42,278.13	56,085.87	62,819.04	82,318.87	87,242.16	110,018.21	591,359.20		Drawings
-Principal	46,855.48	6,758.35	23,382.66	25,870.19	35,832.78	39,131.71	55,946.17	55,998.61	66,198.24	355,974.19		Debt Service
-Interes	45,894.64	9,678.78	18,027.02	16,407.94	20,253.09	23,687.33	26,372.70	31,243.55	43,819.97	235,385.02		-Principal
												-Interest

*) Përfshin borxhin shtetëror dhe shtetëror të garantuar (Tabela I.1 + Tabela I.2)

**) Përfshihen të dhënat për periudhën 1991-2000

***) Deri më 31.12.2008

Ne këtë tabelë nuk përfshihen kredia e FMN-se

*) Includes external direct and external guaranteed debt (Table I.1 + Table I.2)

**) Cumulative data (1991-2000)

***) As of December 31, 2008

IMF credit is not included

TABELA I.1 - TABLE I.1

BORXHI I JASHEM SHTETEROR I SHQIPERISE
TE DHENA PERMBLEDHESE

EXTERNAL PUBLIC DEBT OF ALBANIA
SUMMARIZED DATA

(USD'000)

Klasifikimi	2000**	2001	2002	2003	2004	2005	2006	2007	2008	GJITHSEJ TOTAL	Classification
I. TE DHENA KUMULATIVE											I. CUMULATIVE DATA (STOCK)
Borxhi Neto	517,956.34	594,875.91	858,849.96	1,025,832.08	1,178,379.12	1,151,593.43	1,277,226.98	1,448,927.84	1,861,423.57	1,861,423.57	Debt Outstanding Disbursed (DOD)
Terheqjet	1,094.18	79,844.19	215,239.22	315,707.17	430,254.63	517,893.11	617,886.71	742,745.57	1,978,240.70	1,978,240.70	Drawings
Pagesat e Borxhit	<u>78,832.56</u>	<u>91,998.80</u>	<u>127,154.40</u>	<u>161,179.22</u>	<u>207,815.16</u>	<u>258,942.15</u>	<u>326,885.48</u>	<u>393,424.48</u>	<u>476,545.88</u>	<u>476,545.88</u>	Debt Service
-Principal	41,122.67	46,719.89	65,706.63	86,009.45	115,899.39	148,858.59	195,878.04	239,851.39	289,650.67	289,650.67	-Principal
-Interes	37,709.89	45,278.91	61,447.77	75,169.77	91,915.77	110,083.56	131,007.45	153,573.10	186,895.22	186,895.22	-Interest
Borxhi i nenshkruar i paterhequr	258,297.64	269,741.53	357,284.10	362,387.14	450,768.39	422,421.54	572,889.35	898,234.24	992,159.03	992,159.03	Committed Undisbursed Balance (CUB)
II. TE DHENA VJETORE											II. ANNUAL DATA (FLOWS)
Terheqjet	739,834.72	78,750.01	135,395.03	100,467.95	114,547.46	87,638.48	99,993.60	124,858.86	496,754.59	1,978,240.70	Drawings
Pagesat e Borxhit	<u>78,832.56</u>	<u>13,166.24</u>	<u>35,155.60</u>	<u>34,024.82</u>	<u>46,635.94</u>	<u>51,126.99</u>	<u>67,943.34</u>	<u>66,539.00</u>	<u>83,121.40</u>	<u>476,545.88</u>	Debt Service
-Principal	41,122.67	5,597.22	18,986.74	20,302.82	29,889.94	32,959.20	47,019.45	43,973.35	49,799.28	289,650.67	-Principal
-Interes	37,709.89	7,569.02	16,168.86	13,722.00	16,746.00	18,167.79	20,923.89	22,565.65	33,322.12	186,895.22	-Interest

*) Te dhena kumulative (1991-2000)

***) Deri me 31.12.2008

Ne kete table nuk perfshihet kredia e FMN-se

*) Cumulative data (1991-2000)

**) As of December 31, 2008

IMF credit is not included

TABELA I.2 - TABLE I.2

BORXHI I JASHEM I GARANTUAR I SHQIPERISE
TE DHENA PERMBLEDHESE

EXTERNAL PUBLICLY GUARANTEED DEBT OF ALBANIA
SUMMARIZED DATA

(USD'000)											
Klasifikimi	2000**	2001	2002	2003	2004	2005	2006	2007	2008	GJITHSEJ TOTAL	Classification
I. TE DHENA KUMULATIVE											I. CUMULATIVE DATA (STOCK)
Borxhi Neto	99,019.28	102,831.36	120,768.69	174,571.94	211,586.39	207,140.33	270,991.37	333,498.74	359,244.09	359,244.09	Debt Outstanding Disbursed (DOD)
Terheqjet	126,762.06	136,971.22	148,371.27	181,949.18	214,109.82	242,904.97	297,741.18	343,619.23	395,225.59	395,225.59	Drawings
Pagesat e Borxhit	<u>13,917.56</u>	<u>17,188.45</u>	<u>23,442.53</u>	<u>31,695.84</u>	<u>41,145.77</u>	<u>52,837.82</u>	<u>67,213.35</u>	<u>87,916.51</u>	<u>114,813.32</u>	<u>114,813.32</u>	Debt Service
-Principal	5,732.81	6,893.94	11,289.86	16,857.23	22,800.07	28,972.58	37,899.30	49,924.56	66,323.52	66,323.52	-Principal
-Interes	8,184.75	10,294.51	12,152.67	14,838.61	18,345.70	23,865.24	29,314.05	37,991.95	48,489.80	48,489.80	-Interest
Borxhi i nenshkruar i paterhequr	105,036.63	87,390.98	111,853.00	124,412.47	229,435.45	233,140.42	201,710.18	199,064.75	158,622.10	158,622.10	Committed Undisbursed Balance (CUB)
II. TE DHENA VJETORE											II. ANNUAL DATA (FLOWS)
Terheqjet	126,762.06	10,209.16	11,400.05	33,577.91	32,160.64	28,795.15	54,836.21	45,878.05	51,606.36	395,225.59	Drawings
Pagesat e Borxhit	<u>13,917.56</u>	<u>3,270.89</u>	<u>6,254.08</u>	<u>8,253.31</u>	<u>9,449.93</u>	<u>11,692.05</u>	<u>14,375.53</u>	<u>20,703.16</u>	<u>26,896.81</u>	<u>114,813.32</u>	Debt Service
-Principal	5,732.81	1,161.13	4,395.92	5,567.37	5,942.84	6,172.51	8,926.72	12,025.26	16,398.96	66,323.52	-Principal
-Interes	8,184.75	2,109.76	1,858.16	2,685.94	3,507.09	5,519.54	5,448.81	8,677.90	10,497.85	48,489.80	-Interest

*) Te dhena kumulative (1991-2000)

**) Deri me 31.12.2008

*) Cumulative data (1991-2000)

**) As of December 31, 2008

BORXHI I JASHEM* AFATGJATE I SHQIPERISE
TERHEQJET NE VITE NGA KREDITE E HUAJA SIPAS KREDITOREVE

LONG-TERM EXTERNAL DEBT* OF ALBANIA
DRAWINGS BY YEARS AND BY CREDITORS

Sipas kreditoreve	Deri 31.12.2000 UP TO 31.12.2000	2001	2002	2003	2004	2005	2006	2007	2008				GJITHSEJ TOTAL	By Creditors
									I	II	III	IV		
-Shumepalesh (I)	432,927.25	54,692.74	109,590.01	104,476.45	110,687.90	83,791.39	113,580.38	135,961.88	21,865.77	19,882.63	80,907.41	43,306.70	1,311,670.50	-Multilateral (I)
CEB	-	-	-	850.00	3,172.00	7,345.53	638.00	11,414.64	2,896.20	-	12,095.02	8,078.87	46,490.26	CEB
EC	-	-	-	-	-	-	10,857.61	-	-	-	-	-	10,857.61	EC
EBRD	13,579.15	2,122.06	7,243.69	15,265.15	15,790.82	18,715.53	23,270.89	19,467.09	2,690.09	4,799.68	16,278.05	11,771.61	150,993.80	EBRD
EIB	28,902.27	10,186.30	10,091.02	14,445.10	13,362.70	9,682.14	21,338.65	42,754.60	7,426.55	-	35,502.76	5,176.46	198,868.54	EIB
IBRD	-	-	-	-	-	-	-	5,404.28	2,047.62	4,906.52	1,880.27	2,916.06	17,154.75	IBRD
IDA	366,433.84	34,159.04	79,275.75	60,882.35	66,843.80	34,047.88	45,417.22	48,441.87	4,136.94	6,209.67	7,003.98	9,504.20	762,356.54	IDA
IDB	2,246.28	3,436.36	4,690.34	3,906.50	4,352.78	9,866.87	10,640.18	6,678.22	2,297.49	3,763.74	5,017.49	2,722.30	59,618.55	IDB
IFAD	14,209.27	2,370.28	3,958.67	5,837.90	2,927.03	2,962.47	223.73	1,010.57	200.00	203.02	600.00	1,146.06	35,649.00	IFAD
OPEC	7,556.44	2,418.70	4,330.54	3,289.45	4,238.78	1,170.98	1,194.13	790.61	170.88	-	2,529.84	1,991.14	29,681.48	OPEC
-Dypalesh (II)	352,827.55	34,266.42	37,205.07	29,569.42	36,020.19	32,642.25	41,249.42	34,775.03	5,088.46	136,647.47	85,353.59	155,308.92	980,953.78	-Bilateral (II)
AUSTRI	5,964.78	-	-	-	-	-	-	-	-	-	-	-	5,964.78	AUSTRIA
GJERMANI	78,692.92	4,918.30	8,748.71	9,786.38	10,541.05	8,628.09	10,280.32	18,766.21	1,832.33	2,439.00	5,970.39	5,068.24	165,671.93	GERMANY
GREQI	14,255.60	1,285.84	-	-	-	-	-	-	-	126,392.09	73,691.97	130,749.91	346,375.41	GREECE
ITALI	88,812.89	10,197.86	21,548.56	5,638.78	7,911.46	7,472.06	8,593.37	9,414.03	2,398.57	3,409.34	3,034.71	15,123.06	183,552.69	ITALY
JAPONI	29,947.17	-	-	5,469.69	9,537.04	15,430.79	2,229.26	-	-	-	-	-	62,613.95	JAPAN
KINE	37,260.36	-	-	-	-	-	-	-	-	-	-	-	37,260.36	CHINA
KUVAIT	17,946.36	2,652.55	6,907.81	8,676.58	936.19	1,024.86	3,147.03	2,120.93	857.56	914.56	1,034.84	1,550.72	47,769.98	KUWAIT
NORVEGJI	10,894.87	15,211.87	-	-	-	-	-	-	-	-	-	-	26,106.74	NORWAY
SPAIN	-	-	-	-	-	-	-	1,395.67	-	322.10	189.73	542.26	2,449.76	SPANJA
SUEDI	4,125.00	-	-	-	-	-	-	-	-	-	-	-	4,125.00	SWEDEN
TURQI	20,980.64	-	-	-	-	-	-	-	-	-	-	-	20,980.64	TURKEY
KOREA	-	-	-	-	7,094.45	86.45	16,999.44	3,078.19	-	328.17	-	-	27,586.69	SOUTH KOREA
HUNGARI	14,178.95	-	-	-	-	-	-	-	-	-	-	-	14,178.95	HUNGARY
HOLLANDE	-	-	-	-	-	-	-	-	-	2,842.21	1,431.95	2,274.73	6,548.89	NETHERLANDS
MAQEDONI	1,160.26	-	-	-	-	-	-	-	-	-	-	-	1,160.26	FYROM
RUMANIA	5,408.23	-	-	-	-	-	-	-	-	-	-	-	5,408.23	ROMANIA
SLLOVAKIA	5,060.82	-	-	-	-	-	-	-	-	-	-	-	5,060.82	SLOVAK REP.
CEKI	10,121.64	-	-	-	-	-	-	-	-	-	-	-	10,121.64	CZECH REP.
BULLGARI	103.25	-	-	-	-	-	-	-	-	-	-	-	103.25	BULGARIA
ZVICRA	6,663.64	-	-	-	-	-	-	-	-	-	-	-	6,663.64	ZWITZERLAND
POLONI	1,250.16	-	-	-	-	-	-	-	-	-	-	-	1,250.16	POLAND
-Klubi i Parisit (III)	80,841.98	-	-	-	-	-	-	-	-	-	-	-	80,841.98	-Paris Club (III)
AUSTRI	8,201.47	-	-	-	-	-	-	-	-	-	-	-	8,201.47	AUSTRIA
ANGLI	24.89	-	-	-	-	-	-	-	-	-	-	-	24.89	UNITED KINGDOM
DANIMARKE	127.00	-	-	-	-	-	-	-	-	-	-	-	127.00	DENMARK
FRANCE	20,059.83	-	-	-	-	-	-	-	-	-	-	-	20,059.83	FRANCE
GJERMANI	13,490.04	-	-	-	-	-	-	-	-	-	-	-	13,490.04	GERMANY
HOLLANDE	1,094.18	-	-	-	-	-	-	-	-	-	-	-	1,094.18	NETHERLANDS
ITALI	2,139.96	-	-	-	-	-	-	-	-	-	-	-	2,139.96	ITALY
RUSI	35,704.62	-	-	-	-	-	-	-	-	-	-	-	35,704.62	RUSSIA
GJITHSEJ (I+II+III)	866,596.78	88,959.15	146,795.08	134,045.86	146,708.09	116,433.63	154,829.80	170,736.91	26,954.23	156,530.10	166,261.00	198,615.62	2,373,466.26	TOTAL (I+II+III)

*) Perfishin borxhin shtetedor dhe shtetedor te garantuar (Tabela II.1 + Tabela II.2)

***) Deri me 31.12.2008

Ne kete table nuk perfishihet kredia e FMN-se

*) Includes external direct and external guaranteed debt (Table II.1 + Table II.2)

**) As of December 31,2008

IMF credit is not included

BORXHI I JASHEM SHTETEROR I SHQIPERISE
TERHEQJET NE VITE NGA KREDITE E HUAJA SIPAS KREDITOREVE

LONG-TERM EXTERNAL PUBLIC DEBT OF ALBANIA
DRAWINGS BY YEARS AND BY CREDITORS

Sipas kreditoreve	Deri 31.12.2000 UP TO 31.12.2000	2001	2002	2003	2004	2005	2006	2007	2008				GJITHSEJ TOTAL	By Creditors
									I	II	III	IV		
-Shumepalesh (I)	414,367.22	52,570.68	102,346.33	78,682.04	97,745.17	72,575.65	81,831.25	100,451.70	13,627.87	18,444.82	53,503.19	37,380.84	1,123,526.75	-Multilateral (I)
CEB	-	-	-	850.00	3,172.00	7,345.53	638.00	11,414.64	2,896.20	-	12,095.02	8,078.87	46,490.26	CEB
EC	-	-	-	-	-	-	10,857.61	-	-	-	-	-	10,857.61	EC
EBRD	-	-	-	3,915.85	9,026.09	7,499.79	498.55	9,498.00	1,878.74	3,361.87	4,351.31	5,845.75	45,875.94	EBRD
EIB	23,921.39	10,186.30	10,091.02	-	7,184.70	9,682.14	12,361.85	17,213.51	-	-	20,025.28	5,176.46	115,842.65	EIB
IBRD	-	-	-	-	-	-	-	5,404.28	2,047.62	4,906.52	1,880.27	2,916.06	17,154.75	IBRD
IDA	366,433.84	34,159.04	79,275.75	60,882.35	66,843.80	34,047.88	45,417.22	48,441.87	4,136.94	6,209.67	7,003.98	9,504.20	762,356.54	IDA
IDB	2,246.28	3,436.36	4,690.34	3,906.50	4,352.78	9,866.87	10,640.18	6,678.22	2,297.49	3,763.74	5,017.49	2,722.30	59,618.54	IDB
IFAD	14,209.27	2,370.28	3,958.67	5,837.90	2,927.03	2,962.47	223.73	1,010.57	200.00	203.02	600.00	1,146.06	35,649.00	IFAD
OPEC	7,556.44	2,418.70	4,330.54	3,289.45	4,238.78	1,170.98	1,194.13	790.61	170.88	-	2,529.84	1,991.14	29,681.48	OPEC
-Dypalesh (II)	244,625.52	26,179.33	33,048.71	21,785.91	16,802.29	15,062.85	18,162.35	24,407.16	4,930.69	133,366.52	83,346.76	152,153.90	773,871.99	-Bilateral (II)
AUSTRI	5,964.78	-	-	-	-	-	-	-	-	-	-	-	5,964.78	AUSTRIA
GJERMANI	28,387.77	2,516.66	7,853.90	9,731.55	10,531.11	8,628.09	10,280.32	12,777.12	1,832.33	660.85	4,109.81	2,157.12	99,466.63	GERMANY
GREQI	4,350.04	1,285.84	-	-	-	-	-	-	-	126,392.09	73,691.97	130,749.91	336,469.85	GREECE
ITALI	51,645.02	4,512.42	18,287.00	3,377.78	5,334.99	5,409.90	4,735.00	8,113.44	2,240.80	2,234.71	2,888.46	14,879.16	123,658.67	ITALY
JAPONI	19,123.74	-	-	-	-	-	-	-	-	-	-	-	19,123.74	JAPAN
KINE	37,260.36	-	-	-	-	-	-	-	-	-	-	-	37,260.36	CHINA
KUVAIT	17,946.36	2,652.54	6,907.81	8,676.58	936.19	1,024.86	3,147.03	2,120.93	857.56	914.56	1,034.84	1,550.72	47,769.98	KUWAIT
HOLLANDE	-	-	-	-	-	-	-	-	-	2,842.21	1,431.95	2,274.73	6,548.89	NETHERLANDS
NORVEGJI	10,894.87	15,211.87	-	-	-	-	-	-	-	-	-	-	26,106.74	NORWAY
SPAIN	-	-	-	-	-	-	-	1,395.67	-	322.10	189.73	542.26	2,449.76	SPANJA
SUEDI	4,125.00	-	-	-	-	-	-	-	-	-	-	-	4,125.00	SWEDEN
TURQI	20,980.64	-	-	-	-	-	-	-	-	-	-	-	20,980.64	TURKEY
HUNGARI	14,178.95	-	-	-	-	-	-	-	-	-	-	-	14,178.95	HUNGARY
MAQEDONI	1,160.26	-	-	-	-	-	-	-	-	-	-	-	1,160.26	FYROM
RUMANI	5,408.23	-	-	-	-	-	-	-	-	-	-	-	5,408.23	ROMANIA
SLLOVAKI	5,060.82	-	-	-	-	-	-	-	-	-	-	-	5,060.82	SLOVAK REP.
CEKI	10,121.64	-	-	-	-	-	-	-	-	-	-	-	10,121.64	CZECH REP.
BULLGARI	103.25	-	-	-	-	-	-	-	-	-	-	-	103.25	BULGARIA
ZVICRA	6,663.64	-	-	-	-	-	-	-	-	-	-	-	6,663.64	ZWITZERLAND
POLONI	1,250.16	-	-	-	-	-	-	-	-	-	-	-	1,250.16	POLAND
-Klubi i Parisit (III)	80,841.98	-	-	-	-	-	-	-	-	-	-	-	80,841.98	-Paris Club (III)
AUSTRI	8,201.47	-	-	-	-	-	-	-	-	-	-	-	8,201.47	AUSTRIA
ANGLI	24.89	-	-	-	-	-	-	-	-	-	-	-	24.89	UNITED KINGDOM
DANIMARKE	127.00	-	-	-	-	-	-	-	-	-	-	-	127.00	DENMARK
FRANCE	20,059.83	-	-	-	-	-	-	-	-	-	-	-	20,059.83	FRANCE
GJERMANI	13,490.04	-	-	-	-	-	-	-	-	-	-	-	13,490.04	GERMANY
HOLLANDE	1,094.18	-	-	-	-	-	-	-	-	-	-	-	1,094.18	NETHERLANDS
ITALI	2,139.96	-	-	-	-	-	-	-	-	-	-	-	2,139.96	ITALY
RUSI	35,704.62	-	-	-	-	-	-	-	-	-	-	-	35,704.62	RUSSIA
GJITHSEJ (I+II+III)	739,834.72	78,750.01	135,395.04	100,467.95	114,547.46	87,638.50	99,993.60	124,858.86	18,558.56	151,811.34	136,849.95	189,534.74	1,978,240.72	TOTAL (I+II+III)

***) Deri me 31.12.2008
Ne kete tabele nuk perfshihet kredia e FMN-se

***) As of December 31,2008
IMF credit is not included

TABELA II.2 - TABLE II.2

BORXHI I JASHEM I GARANTUAR I SHQIPERISE
TERHEQJET NE VITE NGA KREDITE E HUAJA SIPAS KREDITOREVE

EXTERNAL PUBLICLY GUARANTEED DEBT OF ALBANIA
DRAWINGS BY YEARS AND BY CREDITORS

Sipas kreditoreve	Deri 31.12.2000 UP TO 31.12.2000	2001	2002	2003	2004	2005	2006	2007	2008				GJITHSEJ TOTAL	By Creditors
									I	II	III	IV		
-Shumepalesh (I)	18,560.03	2,122.06	7,243.69	25,794.40	12,942.73	11,215.74	31,749.13	35,510.18	8,237.90	1,437.81	27,404.22	5,925.86	188,143.76	-Multilateral (I)
EBRD	13,579.15	2,122.06	7,243.69	11,349.31	6,764.73	11,215.74	22,772.34	9,969.09	811.35	1,437.81	11,926.74	5,925.86	105,117.87	EBRD
EIB	4,980.88	-	-	14,445.10	6,178.00	-	8,976.80	25,541.09	7,426.55	-	15,477.48	-	83,025.90	EIB
-Dypalesh (II)	108,202.03	8,087.10	4,156.37	7,783.51	19,217.90	17,579.40	23,087.07	10,367.87	157.77	3,280.95	2,006.83	3,155.02	207,081.81	-Bilateral (II)
GJERMANI	50,305.15	2,401.65	894.81	54.83	9.93	-	-	5,989.09	-	1,778.15	1,860.58	2,911.12	66,205.31	GERMANY
GREQI	9,905.57	-	-	-	-	-	-	-	-	-	-	-	9,905.57	GREECE
ITALI	37,167.88	5,685.45	3,261.56	2,259.00	2,576.48	2,062.16	3,858.37	1,300.59	157.77	1,174.63	146.25	243.90	59,894.03	ITALY
JAPONI	10,823.43	-	-	5,469.69	9,537.04	15,430.79	2,229.26	-	-	-	-	-	43,490.21	JAPAN
KOREA	-	-	-	-	7,094.45	86.45	16,999.44	3,078.19	-	328.17	-	-	27,586.69	SOUTH KOREA
GJITHSEJ (I+II)	126,762.06	10,209.16	11,400.06	33,577.91	32,160.63	28,795.14	54,836.20	45,878.05	8,395.67	4,718.76	29,411.05	9,080.88	395,225.57	TOTAL (I+II)

***) Deri me 31.12.2008

***) As of December 31,2008

BORXHI I JASHEM* AFATGJATE I SHQIPERISE
TERHEQJET NE VITE SIPAS SEKTOREVE EKONOMIKE

LONG-TERM EXTERNAL DEBT* OF ALBANIA
DRAWINGS BY ECONOMIC SECTORS

Sipas sektoreve ekonomike	Deri 31.12.2000 UP TO 31.12.2000	2001	2002	2003	2004	2005	2006	2007	(USD'000)				GJITHSEJ TOTAL	By Economic Sectors
									2008					
									I	II	III	IV		
ADMINISTRATA SHETERORE	12,267.93	2,325.28	4,919.32	6,142.81	3,229.64	2,983.68	2,115.54	2,326.63	3.34				36,307.48	Public Administration
ARESIMI	13,267.66	394.01	733.76	7,827.11	6,327.82	2,470.59	131.12	13,507.16	2,896.20				59,650.44	Education
BILANCI I PAGESAVE	22,495.35	-	-	-	-	-	-	-	-			12,095.02	22,495.35	Balance of Payment
BUJQESI, UJTJE	66,068.27	7,139.81	13,375.64	12,688.01	5,838.22	7,501.80	10,929.67	11,544.53	2,098.83	2,014.69	7,815.03	2,902.25	149,916.76	Agriculture-Irrigation
ENERGJETIKE	43,340.35	23,577.53	35,740.65	35,355.70	42,657.18	39,934.64	72,874.93	51,752.12	9,582.92	4,615.19	31,558.48	19,019.52	410,009.19	Energy
IMPORT MALLRASH DHE PAJISJESH	75,831.99	3,209.21	213.61	8.66	-	-	-	-	-	-	-	-	79,263.46	Import of Goods and Services
INDUSTRI E LEHTE	3,052.47	-	-	-	-	-	-	-	-	-	-	-	3,052.47	Light Industry
INFRASTRUKTURE URBANE DHE RURALE	7,964.68	6,776.24	2,202.68	6,962.25	11,762.69	8,910.76	5,575.77	4,498.00	254.92	1,669.86	2,085.07	6,447.82	65,110.74	Urban and Rural Infrastructure
KLUBI I PARISIT DHE RISKEDULIME TE TJERA	163,364.96	-	-	-	-	-	-	-	-	-	-	-	163,364.96	Paris Club & Other Rescheduling
MBESHETETJE PER BUXHETIN	174,842.05	-	29,101.82	18,955.57	19,861.10	-	10,857.61	10,654.65	-	-	-	-	264,272.80	Budgetary Support
MBROJTJA	2,225.40	230.25	700.52	1,841.35	2,403.42	2,644.84	36.01	-	-	-	-	-	10,081.79	Defence
MBROJTJA E MJEDISIT	-	359.85	216.26	228.54	351.80	1,141.34	1,371.02	1,593.31	-	-	383.59	-	3,363.04	Environmental Protection
PRODHIME ELEKTRIKE	-	-	-	-	-	-	-	-	-	-	-	-	-	Electrical Products
PYJE	2,968.92	1,176.61	1,820.61	1,038.36	370.09	-	-	-	-	-	-	-	7,374.59	Forestry
SHENDETESI	14,282.91	4,827.84	5,691.20	1,190.05	6,766.13	7,512.27	2,346.31	9,175.10	1,222.87	488.07	1,418.29	805.22	55,726.25	Health
SIGURIME SHOQ./TREGU I PUNES	10,620.47	-	385.92	296.37	235.03	666.24	1,189.86	2,330.11	1,062.23	2,135.16	1,134.49	-	20,075.87	Social Safety/Labor Market
STREHIMI	15,089.41	1,285.84	-	-	-	-	-	-	-	-	-	3,067.41	19,442.66	Housing
TE TJERA	13,104.49	-	-	-	-	-	-	-	-	-	-	-	13,104.49	Others
TELEKOMUNIKACION	17,596.33	361.64	-	-	-	-	-	-	-	-	-	-	17,957.97	Telecommunication
TRANSPORT	88,408.22	25,848.71	31,446.70	18,105.00	31,994.85	29,040.24	34,441.97	41,342.70	7,212.28	139,311.10	99,929.57	154,675.83	701,757.17	Transport
TRANSPORTI AJROR	27,569.93	-	-	-	-	-	-	-	-	-	-	-	27,569.93	Air Transport
TRANSPORTI HEKURUDHOR	4,526.82	-	-	-	-	-	-	-	-	-	-	-	4,526.82	Rail Transport
UJESJELLESAKANALIZIME	32,885.87	6,315.44	10,555.44	15,799.88	11,843.90	12,423.79	12,736.28	20,130.92	2,357.90	5,978.92	9,241.47	3,003.96	143,273.76	Water Supply and Sewerage
ZHVILL. SEK.PRIVAT	33,087.78	2,818.98	5,535.98	439.17	102.09	523.52	871.10	49.41	114.10	-	-	-	6,847.55	Enterprise Sector Development
ZHVILLIMI RURAL	15,070.90	2,311.89	4,154.98	7,167.06	2,963.93	2,962.61	223.73	1,010.58	200.00	203.02	600.00	-	1,846.06	Rural Development
GJITHSEJ	859,933.14	88,959.13	146,795.07	134,045.87	146,707.87	116,433.63	154,829.82	170,736.91	26,954.22	156,530.11	166,261.01	198,615.62	2,366,802.40	TOTAL

*) Përfshin borxhin shtetëror dhe shtetëror të garantuar
Ne këto tabela nuk përfshihen kredia e FMN-se
***) Deri më 31.12.2008

*) Includes external public and external publicly guaranteed debt
IMF credit is not included
**) As of December 31, 2008

BORXHI I JASHEM* AFATGJATE I SHQIPERISE
BORXHI NETO SIPAS KREDITOREVE

LONG-TERM EXTERNAL DEBT* OF ALBANIA
DEBT OUTSTANDING DISBURSED BY CREDITORS

(USD'000)

Sipas kreditoreve	2000	2001	2002	2003	2004	2005	2006	2007	2008	By Creditors
-Shumepalesh (I)	402,613.41	439,142.36	581,457.19	739,843.49	877,940.28	870,162.61	1,012,462.46	1,189,910.12	1,293,710.79	-Multilateral (I)
CEB	-	-	-	850.00	4,022.00	11,348.34	12,696.69	25,877.52	46,704.93	CEB
EC	-	-	-	-	-	-	11,848.50	13,238.10	12,670.70	EC
EBRD	7,576.17	8,756.76	13,618.71	27,809.01	42,144.79	50,286.15	69,800.59	87,270.52	108,892.20	EBRD
EIB	27,216.89	35,129.33	49,940.32	71,587.35	86,596.20	79,361.84	105,095.90	157,250.87	188,897.75	EIB
IBRD	-	-	-	-	-	-	-	5,662.96	16,802.30	IBRD
IDA	345,391.18	366,143.43	475,773.72	583,260.62	677,867.58	655,712.21	728,365.63	808,885.81	812,767.66	IDA
IDB	2,162.88	5,414.56	9,811.63	14,040.04	18,056.03	24,984.36	35,605.88	41,667.95	53,374.68	IDB
IFAD	13,209.85	15,223.14	20,507.14	28,615.04	32,741.19	32,569.00	33,744.01	35,834.81	36,642.82	IFAD
OPEC	7,056.44	8,475.14	11,805.68	13,681.45	16,512.51	15,900.71	15,305.27	14,221.58	16,957.75	OPEC
-Dypalesh (II)	195,973.63	218,406.97	280,764.69	345,939.21	391,560.87	369,707.95	413,397.25	480,837.41	827,346.80	-Bilateral (II)
AUSTRI	4,187.61	3,983.50	1,523.51	1,831.65	1,982.37	1,720.31	-	-	-	AUSTRIA
GJERMANI	50,254.81	52,620.08	71,544.05	96,272.39	110,565.95	103,411.69	125,007.94	158,586.51	164,660.85	GERMANY
GREQI	11,152.68	11,893.51	14,041.32	16,953.06	18,348.09	15,922.59	17,597.25	19,408.14	342,029.38	GREECE
ITALI	69,172.29	75,967.67	110,230.83	134,374.98	148,996.52	132,183.77	151,201.15	173,188.08	182,968.78	ITALY
JAPONI	28,995.27	25,381.91	28,081.38	37,124.34	47,773.57	54,590.92	54,074.84	53,521.10	63,418.15	JAPAN
KINE	1,858.23	1,858.23	1,858.23	1,858.23	1,858.23	1,858.23	1,858.23	1,858.23	1,858.23	CHINA
KUVAIT	15,332.86	16,470.33	23,391.77	29,901.35	29,788.86	29,105.64	23,738.33	31,901.66	33,266.21	KUWAIT
HOLLANDE	-	-	-	-	-	-	-	-	6,194.00	NETHERLANDS
NORVEGJI	10,894.87	26,106.74	25,968.59	23,498.21	21,027.83	18,557.46	13,587.08	11,116.70	8,646.32	NORWAY
SPAIN	-	-	-	-	-	-	-	1,395.67	2,449.76	SPANJE
SUEDI	4,125.00	4,125.00	4,125.00	4,125.00	4,125.00	4,125.00	-	-	-	SWEDEN
KOREA	-	-	-	-	7,094.45	8,232.34	26,332.43	29,861.32	21,855.12	SOUTH KOREA
-Borxhi i riskeduluar (III) (A+B)	18,388.59	40,157.93	117,396.77	114,621.31	120,464.34	118,863.20	122,358.63	111,679.05	99,610.07	-Rescheduled Debt (III) (A+B)
-Klubi i Parisit (A)	18,388.59	17,455.98	55,079.51	52,304.05	48,113.16	42,112.78	41,327.06	40,240.94	38,313.39	-Paris Club (A)
AUSTRI	1,871.82	1,424.47	1,266.65	1,015.22	549.38	-	-	-	-	AUSTRIA
ANGLI	-	-	-	-	-	-	-	-	-	UNITED KINGDOM
DANIMARKE	-	-	-	-	-	-	-	-	-	DENMARK
FRANCE	5,461.87	4,165.32	3,216.14	2,084.94	1,079.53	-	-	-	-	FRANCE
GJERMANI	5,250.90	6,514.52	6,035.80	5,814.93	4,733.19	2,753.50	2,187.63	1,466.52	467.89	GERMANY
HOLLANDE	255.08	194.11	172.60	138.33	74.85	-	-	-	-	NETHERLANDS
ITALI	5,548.92	4,993.46	5,045.30	5,110.45	4,794.49	3,868.89	3,956.10	4,048.10	3,747.58	ITALY
JAPONI	-	164.11	136.17	100.75	52.54	-	-	-	-	JAPAN
RUSI	-	-	39,206.85	38,039.44	36,829.19	35,490.40	35,183.34	34,726.32	34,097.92	RUSSIA
-Te tjere (B)	-	22,701.95	62,317.25	62,317.26	72,351.18	76,750.42	81,031.57	71,438.11	61,296.68	-Others (B)
TURQI	-	22,701.95	22,701.95	22,701.95	22,701.95	22,701.95	20,771.80	18,585.30	16,398.80	TURKEY
KINE	-	-	39,615.31	39,615.31	36,314.03	33,012.75	29,711.48	26,410.21	23,108.93	CHINA
HUNGARI	-	-	-	-	12,761.05	11,343.16	9,925.26	8,507.37	7,089.47	HUNGARY
GJERMANI	-	-	-	-	-	-	3,880.07	3,251.34	2,074.66	GERMANY
MAQEDONI	-	-	-	-	574.15	-	-	-	-	MACEDONIA
RUMANIA	-	-	-	-	-	5,137.82	4,597.00	4,056.17	3,515.35	ROMANIA
SLLOVAKI	-	-	-	-	-	4,554.74	4,048.65	3,542.57	3,036.49	SLOVAK REP.
ÇEKI	-	-	-	-	-	-	8,097.31	7,085.15	6,072.98	CZECH REP.
ITALI	-	-	-	-	-	-	-	-	-	ITALY
GJITHSEJ (I+II+III)	616,975.62	697,707.25	979,618.65	1,200,404.02	1,389,965.49	1,358,733.75	1,548,218.34	1,782,426.58	2,220,667.66	TOTAL (I+II+III)

***) Deri me 31.12.2008

***) As of December 31,2008

BORXHI I JASHEM SHTETEROR I SHQIPERISE
BORXHI NETO SIPAS KREDITOREVE

EXTERNAL PUBLIC DEBT OF ALBANIA
DEBT OUTSTANDING DISBURSED BY CREDITORS

(USD'000)

Sipas kreditoreve	2000	2001	2002	2003	2004	2005	2006	2007	2008	By Creditors
-Shumepalesh (I)	390,404.77	426,163.49	563,880.56	696,422.96	822,895.88	816,216.01	928,774.66	1,067,557.46	1,143,982.91	-Multilateral (I)
CEB	-	-	-	850.00	4,022.00	11,348.34	12,696.69	25,877.52	46,704.93	CEB
EC	-	-	-	-	-	-	11,848.50	13,238.10	12,670.70	EC
EBRD	-	-	-	4,373.47	14,646.80	19,641.23	20,497.92	30,781.48	42,306.03	EBRD
EIB	22,584.42	30,907.23	45,982.40	51,602.34	59,049.78	56,060.17	70,710.76	91,387.25	105,756.04	EIB
IBRD	-	-	-	-	-	-	-	5,662.96	16,802.30	IBRD
IDA	345,391.18	366,143.43	475,773.72	583,260.62	677,867.58	655,712.21	728,365.63	808,885.81	812,767.66	IDA
IDB	2,162.88	5,414.56	9,811.63	14,040.04	18,056.03	24,984.36	35,605.88	41,667.95	53,374.68	IDB
IFAD	13,209.85	15,223.14	20,507.14	28,615.04	32,741.19	32,569.00	33,744.01	35,834.81	36,642.82	IFAD
OPEC	7,056.44	8,475.14	11,805.68	13,681.45	16,512.51	15,900.71	15,305.27	14,221.58	16,957.75	OPEC
-Dypalesh (II)	109,162.99	134,516.01	177,598.31	214,806.82	235,028.79	216,514.22	226,093.69	269,691.33	617,830.59	-Bilateral (II)
AUSTRI	4,187.61	3,983.50	1,523.51	1,831.65	1,982.37	1,720.31	-	-	-	AUSTRIA
GJERMANI	11,281.44	15,546.32	26,631.94	42,679.48	57,347.30	57,783.23	74,873.54	97,166.84	100,201.98	GERMANY
GREQI	2,960.21	4,109.80	4,812.86	5,858.13	6,340.18	5,502.05	6,006.65	6,458.18	329,634.46	GREECE
ITALI	39,674.86	45,817.00	71,032.59	84,796.64	92,462.15	81,206.95	90,410.55	104,401.53	117,429.36	ITALY
JAPONI	18,847.89	16,499.09	18,253.83	20,258.14	20,096.87	16,655.36	15,619.32	15,392.52	18,150.27	JAPAN
KINE	1,858.23	1,858.23	1,858.23	1,858.23	1,858.23	1,858.23	1,858.23	1,858.23	1,858.23	CHINA
KUVAIT	15,332.86	16,470.33	23,391.77	29,901.35	29,788.86	29,105.64	23,738.33	31,901.66	33,266.21	KUWAIT
HOLLANDE	-	-	-	-	-	-	-	-	6,194.00	NETHERLANDS
NORVEGJI	10,894.87	26,106.74	25,968.59	23,498.21	21,027.83	18,557.46	13,587.08	11,116.70	8,646.32	NORWAY
SPAIN	-	-	-	-	-	-	-	1,395.67	2,449.76	SPANJA
SUEDI	4,125.00	4,125.00	4,125.00	4,125.00	4,125.00	4,125.00	-	-	-	SWEDEN
-Borxhi i riskeduluar (III) (A+B)	18,388.59	40,126.97	117,371.08	114,602.31	120,454.43	118,863.20	122,358.63	111,679.05	99,610.07	-Rescheduled Debt (III) (A+B)
-Klubi i Parisit (A)	18,388.59	17,425.03	55,053.83	52,285.05	48,103.25	42,112.78	41,327.06	40,240.94	38,313.39	-Paris Club (A)
AUSTRI	1,871.82	1,424.47	1,266.65	1,015.22	549.38	-	-	-	-	AUSTRIA
ANGLI	-	-	-	-	-	-	-	-	-	UNITED KINGDOM
DANIMARKE	-	-	-	-	-	-	-	-	-	DENMARK
FRANCE	5,461.87	4,165.32	3,216.14	2,084.94	1,079.53	-	-	-	-	FRANCE
GJERMANI	5,250.90	6,514.52	6,035.80	5,814.93	4,733.19	2,753.50	2,187.63	1,466.52	467.89	GERMANY
HOLLANDE	255.08	194.11	172.60	138.33	74.85	-	-	-	-	NETHERLANDS
ITALI	5,548.92	4,993.46	5,045.30	5,110.45	4,794.49	3,868.89	3,956.10	4,048.10	3,747.58	ITALY
JAPONI	-	133.15	110.48	81.74	42.63	-	-	-	-	JAPAN
RUSI	-	-	39,206.85	38,039.44	36,829.19	35,490.40	35,183.34	34,726.32	34,097.92	RUSSIA
-Te tjere (B)	-	22,701.95	62,317.25	62,317.26	72,351.18	76,750.42	81,031.57	71,438.11	61,296.68	-Others (B)
TURQI	-	22,701.95	22,701.95	22,701.95	22,701.95	22,701.95	20,771.80	18,585.30	16,398.80	TURKEY
KINE	-	-	39,615.31	39,615.31	36,314.03	33,012.75	29,711.48	26,410.21	23,108.93	CHINA
HUNGARI	-	-	-	-	12,761.05	11,343.16	9,925.26	8,507.37	7,089.47	HUNGARY
GJERMANI	-	-	-	-	-	-	3,880.07	3,251.34	2,074.66	GERMANY
MAQEDONI	-	-	-	-	574.15	-	-	-	-	MACEDONIA
RUMANI	-	-	-	-	-	5,137.82	4,597.00	4,056.17	3,515.35	ROMANIA
SLLOVAKI	-	-	-	-	-	4,554.74	4,048.65	3,542.57	3,036.49	SLOVAK REP.
ÇEKI	-	-	-	-	-	-	8,097.31	7,085.15	6,072.98	CZECH REP.
ITALI	-	-	-	-	-	-	-	-	-	ITALY
GJTHSEJ (I+II+III)	517,956.34	600,806.48	858,849.96	1,025,832.08	1,178,379.10	1,151,593.43	1,277,226.98	1,448,927.84	1,861,423.57	TOTAL (I+II+III)

**) Deri me 31.12.2008

Ne kete tabelë nuk përfshihet kredia e FMN-se

**) As of December 31, 2008

IMF credit is not included

TABELA IV.2 - TABLE IV.2

BORXHI I JASHEM I GARANTUAR I SHQIPERISE
BORXHI NETO SIPAS KREDITOREVE

EXTERNAL PUBLICLY GUARANTEED DEBT OF ALBANIA
DEBT OUTSTANDING DISBURSED BY CREDITORS

(USD'000)

Sipas kreditoreve	2000	2001	2002	2003	2004	2005	2006	2007	2008	By Creditors
-Shumepalesh (I)	12,208.64	12,978.86	17,576.63	43,420.54	55,044.40	53,946.60	83,687.80	122,352.66	149,727.88	-Multilateral (I)
EBRD	7,576.17	8,756.76	13,618.71	23,435.54	27,497.98	30,644.93	49,302.67	56,489.04	66,586.17	EBRD
EIB	4,632.47	4,222.10	3,957.92	19,985.00	27,546.42	23,301.67	34,385.14	65,863.62	83,141.71	EIB
-Dypalesh (II)	86,810.64	89,821.52	103,166.37	131,132.40	156,532.08	153,193.73	187,303.56	211,146.08	209,516.21	-Bilateral (II)
GJERMANI	38,973.37	39,420.65	44,912.11	53,592.92	53,218.65	45,628.46	50,134.40	61,419.67	64,458.87	GERMANY
GREQI	8,192.47	7,783.71	9,228.47	11,094.94	12,007.92	10,420.54	11,590.61	12,949.96	12,394.92	GREECE
ITALI	29,497.43	33,734.34	39,198.24	49,578.34	56,534.36	50,976.82	60,790.60	68,786.55	65,539.42	ITALY
JAPONI	10,147.38	8,882.82	9,827.55	16,866.20	27,676.70	37,935.56	38,455.52	38,128.58	45,267.88	JAPAN
KOREA					7,094.45	8,232.34	26,332.43	29,861.32	21,855.12	SOUTH KOREA
-Klubi i Parisit (III)	-	30.96	25.69	19.00	9.91	-	-	-	-	-Paris Club (III)
JAPONI		30.96	25.69	19.00	9.91	-	-	-	-	JAPAN
GJITHSEJ (I+II+III)	99,019.28	102,831.34	120,768.69	174,571.94	211,586.39	207,140.33	270,991.37	333,498.74	359,244.09	TOTAL (I+II+III)

***) Deri me 31.12.2008

***) As of December 31,2008

BORXHI I JASHEM* AFATGJATE I SHQIPERISE
BORXHI NETO SIPAS MONEDHAVE

LONG-TERM EXTERNAL DEBT* OF ALBANIA
DOD BY CURRENCY

(USD'000)

Monedha Currency	2008	%
ACU	53,374.68	2.40
EUR	1,068,999.82	48.14
JPY	63,418.15	2.86
KWD	33,266.21	1.50
KRW	21,855.12	0.98
SDR	849,410.49	38.25
USD	130,343.19	5.87
TOTAL	2,220,667.66	100.00

*) Perfshin borxhin e jashtem shteteror dhe shteteror te garantuar

***) Deri me 31.12.2008

Nuk persihet kredia e FMN-se

*) Includes external public and external publicly guaranteed debt

***) As of December 31,2008

IMF credit is not included

BORXHI I JASHEM* AFATGJATE I SHQIPERISE
PJESA E PATERHEQUR E KREDIVE

LONG-TERM EXTERNAL DEBT* OF ALBANIA
COMMITTED UNDISBURSED BALANCE

(USD'000)

Sipas kreditoreve	2000	2001	2002	2003	2004	2005	2006	2007	2008	By Creditors
-Shumepalesh (I)	242,043.81	227,971.04	307,260.11	315,790.76	447,088.65	394,303.28	495,414.51	649,365.92	605,065.94	-Multilateral (I)
CEB	-	-	3,400.00	2,550.00	1,638.00	22,947.44	23,691.60	56,008.41	54,608.40	CEB
EBRD	26,077.88	31,545.95	29,270.09	57,423.91	99,463.48	79,193.01	109,743.34	146,803.40	107,021.63	EBRD
EIB	20,491.39	9,457.01	67,449.58	64,708.71	169,598.11	120,284.26	157,487.28	175,296.79	153,547.24	EIB
IBRD								45,671.44	32,331.87	IBRD
IDA	158,926.74	141,429.01	165,095.29	157,142.79	134,936.31	135,963.43	158,671.66	152,565.67	172,118.39	IDA
IDB	17,986.47	20,066.34	23,855.07	21,895.47	36,363.54	29,463.99	38,338.73	39,191.55	58,595.00	IDB
IFAD	5,617.77	14,947.86	11,995.76	6,509.63	3,770.73	606.59	407.61	8,068.45	5,782.27	IFAD
OPEC	12,943.56	10,524.86	6,194.32	5,560.25	1,318.48	5,844.56	7,074.30	25,760.21	21,061.14	OPEC
-Dypalesh (II)	121,290.46	129,161.47	161,877.00	171,008.84	233,115.19	261,258.67	279,185.02	447,933.07	545,715.19	-Bilateral (II)
AUSTRI	-	-	-	-	-	-	-	-	-	AUSTRIA
GJERMANI	10,308.75	35,707.18	42,621.88	53,721.09	52,198.41	98,482.21	102,401.03	89,369.04	77,370.80	GERMANY
GREQI	10,693.90	21,835.91	25,888.93	31,125.00	33,686.21	39,653.64	44,106.12	49,278.92	47,166.79	GREECE
ITALI	43,979.03	37,473.30	52,465.07	56,778.44	109,725.93	87,737.97	111,076.33	291,648.86	255,001.31	ITALY
JAPONI	31,664.32	27,718.34	30,666.30	28,073.94	19,192.20	2,209.07	-	-	123,251.69	JAPAN
KINE	141.78	141.78	141.78	-	-	-	-	-	-	CHINA
KUVAIT	8,332.57	5,326.72	10,093.04	1,310.37	406.89	12,711.10	7,477.32	7,946.86	24,739.58	KUWAIT
NORVEGJI	16,170.13	958.26	-	-	-	-	-	-	-	NORWAY
HOLLANDE									11,330.32	NETHERLANDS
SUEDI	-	-	-	-	-	-	-	-	-	SWEDEN
SPANJA							9,304.46	7,908.79	6,854.70	SPAIN
KOREA					17,905.55	20,464.69	4,819.76	1,780.60	-	SOUTH KOREA
GJITHSEJ (I+II)	363,334.27	357,132.51	469,137.11	486,799.61	680,203.84	655,561.96	774,599.53	1,097,298.99	1,150,781.13	TOTAL (I+II)

*) Perfshin borxhin shteteror dhe shteteror te garantuar

***) Deri me 31.12.2008

Ne kete table nuk perfshihet kredia e FMN-se

*) Includes external public and external publicly guaranteed debt

**) As of December 31,2008

IMF credit is not included

BORXHI I JASHEM SHTETEROR I SHQIPERISE
PJESA E PATERHEQUR E KREDIVE

EXTERNAL PUBLIC DEBT OF ALBANIA
COMMITTED UNDISBURSED BALANCE

(USD'000)

Sipas kreditoreve	2000	2001	2002	2003	2004	2005	2006	2007	2008	By Creditors
-Shumepalesh (I)	215,642.52	204,958.44	256,661.26	253,554.86	284,767.29	253,631.18	372,065.59	526,802.37	509,714.22	-Multilateral (I)
CEB	-	-	3,400.00	2,550.00	1,638.00	22,947.44	23,691.60	56,008.41	54,608.40	CEB
EBRD	-	8,841.00	10,482.00	17,049.92	8,539.48	479.97	46,095.02	62,995.08	27,156.32	EBRD
EIB	20,167.98	9,149.37	35,638.82	42,846.79	98,200.74	58,325.19	97,786.68	136,541.56	138,060.83	EIB
IBRD								45,671.44	32,331.87	IBRD
IDA	158,926.74	141,429.01	165,095.29	157,142.79	134,936.31	135,963.43	158,671.66	152,565.67	172,118.39	IDA
IDB	17,986.47	20,066.34	23,855.07	21,895.47	36,363.54	29,463.99	38,338.73	39,191.55	58,595.00	IDB
IFAD	5,617.77	14,947.86	11,995.76	6,509.63	3,770.73	606.59	407.61	8,068.45	5,782.27	IFAD
OPEC	12,943.56	10,524.86	6,194.32	5,560.25	1,318.48	5,844.56	7,074.30	25,760.21	21,061.14	OPEC
-Dypalesh (II)	42,655.13	64,783.09	100,622.84	108,832.28	166,001.10	168,790.36	200,823.76	371,431.87	482,444.81	-Bilateral (II)
AUSTRI	-	-	-	-	-	-	-	-	-	AUSTRIA
GJERMANI	3,378.31	31,461.44	39,352.78	50,010.23	52,198.41	52,820.05	51,611.73	38,650.14	35,388.95	GERMANY
GREQI	10,693.90	21,835.91	25,888.93	31,125.00	33,686.21	39,653.64	44,106.12	49,278.92	47,166.79	GREECE
ITALI	3,938.44	5,059.00	25,146.31	26,386.68	79,709.59	63,605.57	88,324.12	267,647.16	233,712.78	ITALY
JAPONI	-	-	-	-	-	-	-	-	123,251.69	JAPAN
KINE	141.78	141.78	141.78	-	-	-	-	-	-	CHINA
KUVAIT	8,332.57	5,326.72	10,093.04	1,310.37	406.89	12,711.10	7,477.32	7,946.86	24,739.58	KUWAIT
NORVEGJI	16,170.13	958.26	-	-	-	-	-	-	-	NORWAY
SUEDI	-	-	-	-	-	-	-	-	-	SWEDEN
HOLLANDE									11,330.32	NEITHERLANDS
SPANJA							9,304.46	7,908.79	6,854.70	SPAIN
GJITHSEJ (I+II)	258,297.64	269,741.53	357,284.10	362,387.14	450,768.39	422,421.54	572,889.35	898,234.24	992,159.03	TOTAL (I+II)

***) Deri me 31.12.2008

Ne kete tabele nuk perfshihet kredia e FMN-se

***) As of December 31,2008

IMF credit is not included

BORXHI I JASHEM I GARANTUAR I SHQIPERISE
PJESA E PATERHEQUR E KREDIVE

EXTERNAL PUBLICLY GUARANTEED DEBT OF ALBANIA
COMMITTED UNDISBURSED BALANCE

(USD'000)										
Sipas kreditoreve	2000	2001	2002	2003	2004	2005	2006	2007	2008	By Creditors
-Shumepalesh (I)	26,401.29	23,012.60	50,598.85	62,235.91	162,321.36	140,672.10	123,348.92	122,563.55	95,351.72	-Multilateral (I)
EBRD	26,077.88	22,704.95	18,788.09	40,373.99	90,924.00	78,713.03	63,648.32	83,808.32	79,865.31	EBRD
EIB	323.41	307.65	31,810.76	21,861.92	71,397.36	61,959.07	59,700.60	38,755.23	15,486.41	EIB
-Dypalesh (II)	78,635.34	64,378.38	61,254.16	62,176.57	67,114.09	92,468.32	78,361.26	76,501.20	63,270.38	-Bilateral (II)
GJERMANI	6,930.44	4,245.74	3,269.10	3,710.86	-	45,662.16	50,789.30	50,718.90	41,981.85	GERMANY
GREQI	-	-	-	-	-	-	-	-	-	GREECE
ITALI	40,040.59	32,414.30	27,318.75	30,391.77	30,016.33	24,132.40	22,752.21	24,001.70	21,288.53	ITALY
JAPONI	31,664.32	27,718.34	30,666.30	28,073.94	19,192.20	2,209.07	-	-	-	JAPAN
KOREA	-	-	-	-	17,905.55	20,464.69	4,819.76	1,780.60	-	SOUTH KOREA
GJITHSEJ (I+II)	105,036.63	87,390.98	111,853.00	124,412.47	229,435.45	233,140.42	201,710.18	199,064.75	158,622.10	TOTAL (I+II)

***) Deri me 31.12.2008

**) As of December 31,2008